

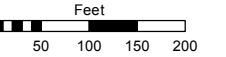
POR. OF THE S 1/2 OF THE SE 1/4 SEC. 9, T19N - R20E

Assessor's Map Number

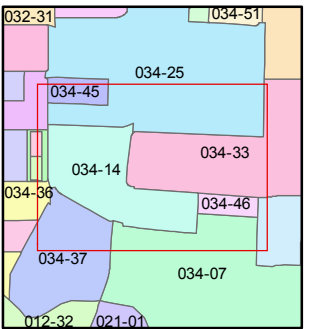
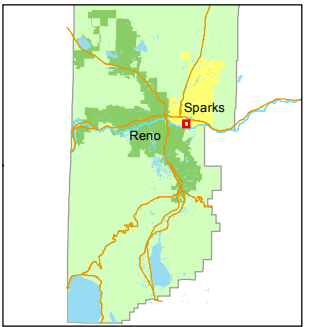
034-14

STATE OF NEVADA
WASHOE COUNTY
ASSESSOR'S OFFICE
 Michael E. Clark, Assessor

1001 East Ninth Street
 Building D
 Reno, Nevada 89512
 (775) 328-2231



1 inch = 200 feet

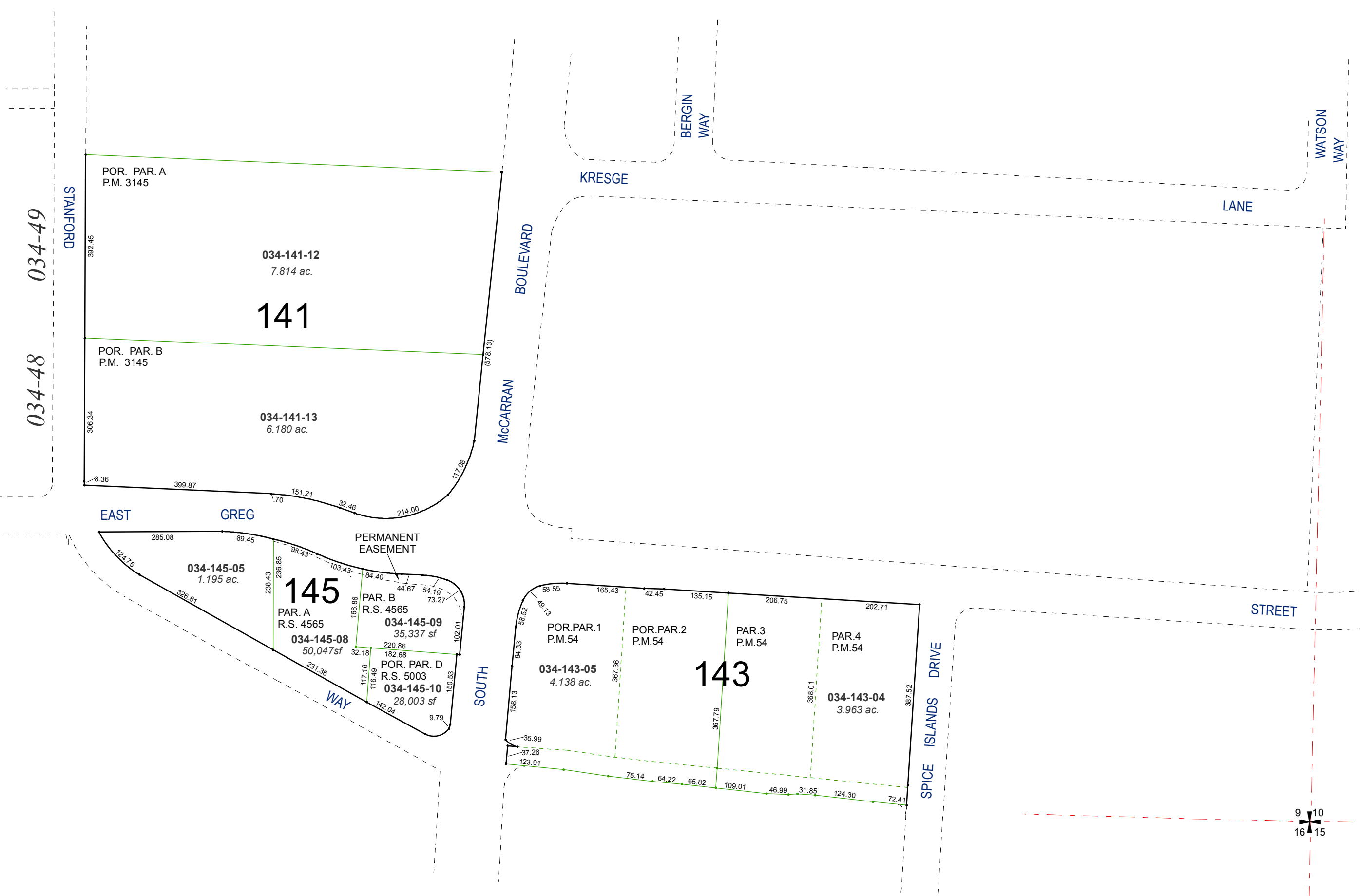


created by: CFB 06/17/2015

last updated: _____

area previously shown on map(s)

NOTE: This map was prepared for the use of the Washoe County Assessor for assessment and illustrative purposes only. It does not represent a survey of the premises. No liability is assumed as to the sufficiency or accuracy of the data delineated hereon.



034-49
034-48

141

034-141-12
7.814 ac.

034-141-13
6.180 ac.

145

034-145-05
1.195 ac.

034-145-08
50,047sf

034-145-09
35,337 sf

034-145-10
28,003 sf

143

034-143-05
4.138 ac.

034-143-04
3.963 ac.

9 10
16 15