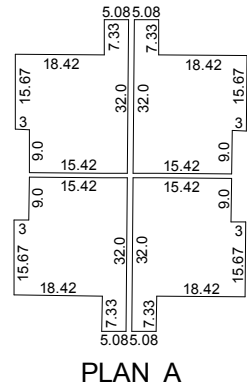
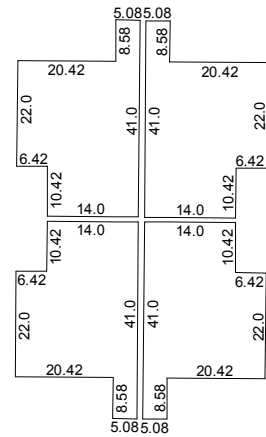


(#1860 & 1914)
AMENDED IRONHORSE VILLAGE UNIT TWO
 A CONDOMINIUM
 A POR. OF THE NE 1/4 OF THE SE 1/4 OF SEC. 6,
 T19N - R20E

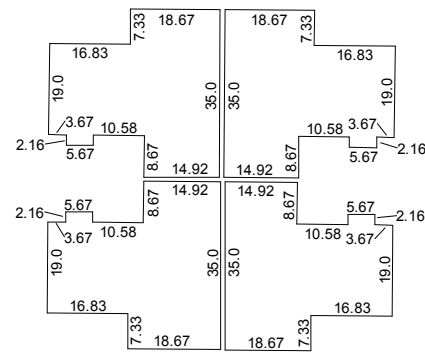
FLOOR PLANS
 - NOT TO SCALE -



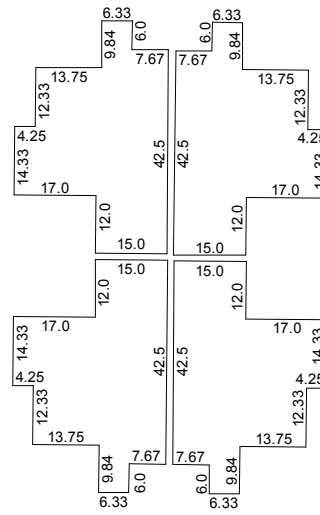
PLAN A



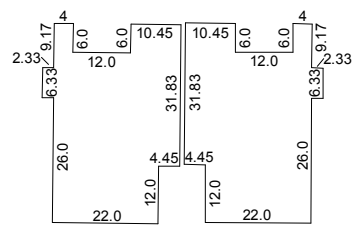
PLAN B



PLAN C
 (8-PLEX)

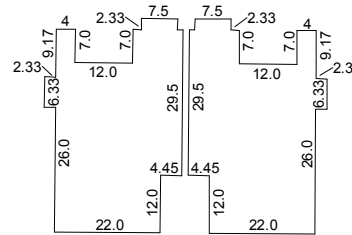


PLAN D

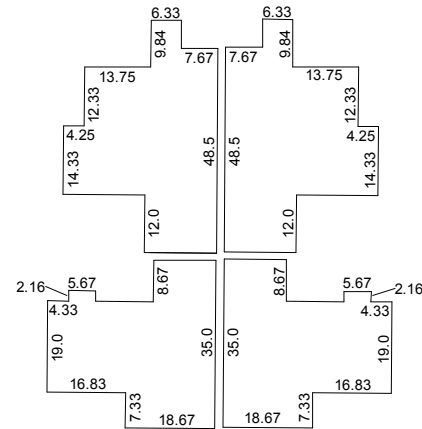


GROUND FLOOR

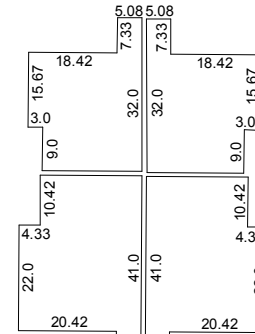
PLAN C
 (4-PLEX)



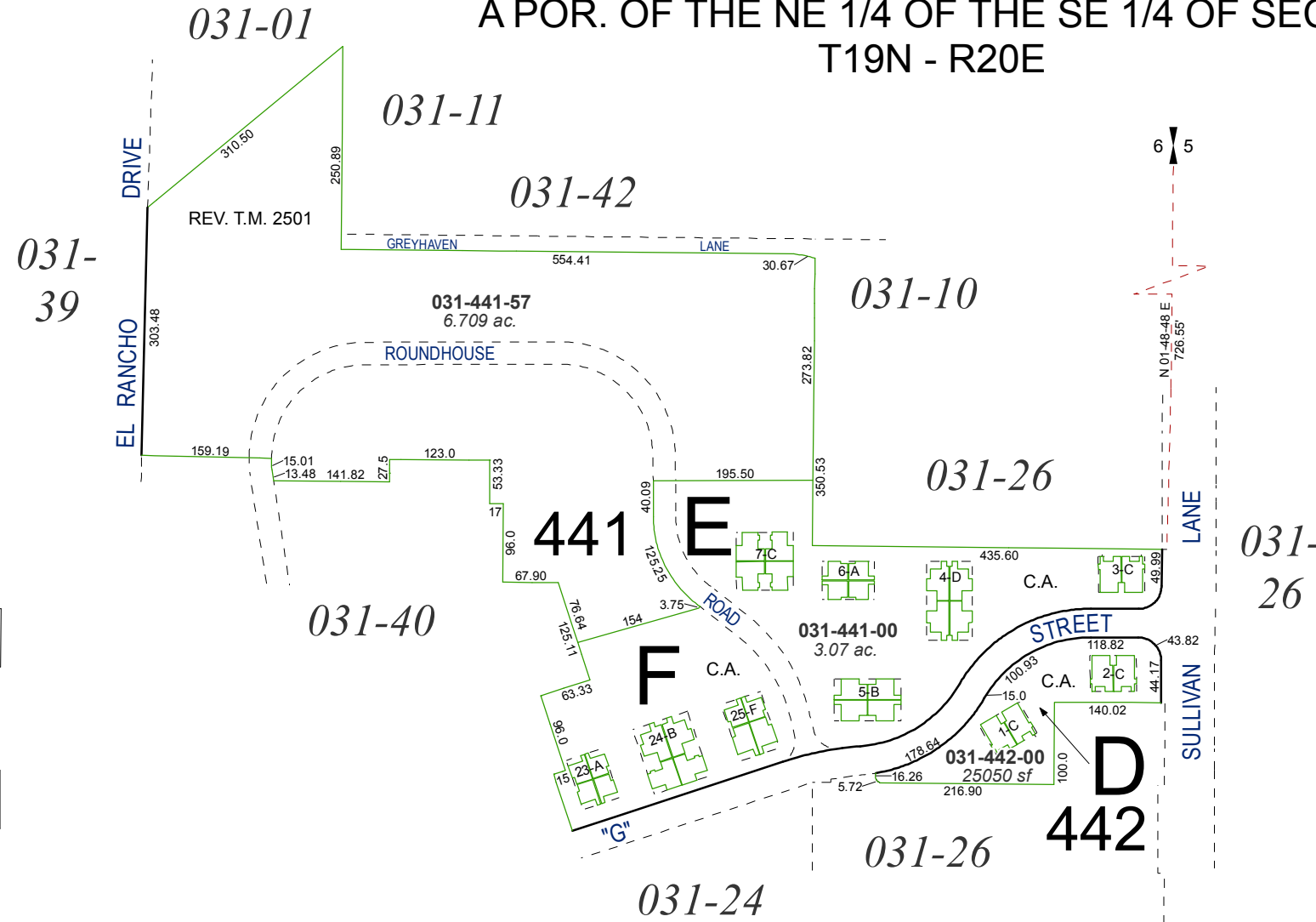
SECOND FLOOR



PLAN E



PLAN F

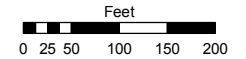


- NOTES:
 - C.A. = COMMON AREA
 - SEE PG. 031-44-S3 FOR FIRST FLOOR UNITS
 - SEE PG. 031-44-S4 FOR SECOND FLOOR UNITS
 - TO EACH AN UNDIVIDED 1/68 INTEREST IN COMMON AREA.

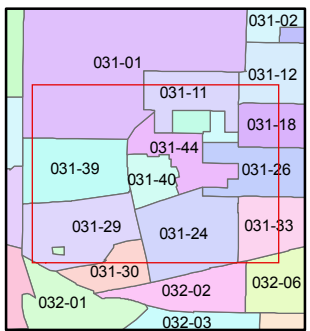
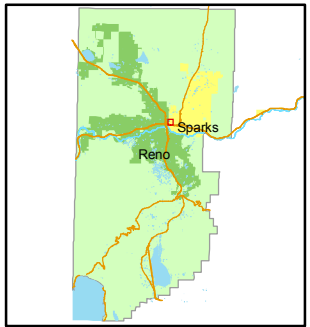
Assessor's Map Number
031-44

STATE OF NEVADA
WASHOE COUNTY
 ASSESSOR'S OFFICE
 Joshua G. Wilson, Assessor

1001 East Ninth Street
 Building D
 Reno, Nevada 89512
 (775) 328-2231



1 inch = 200 feet



created by: NLH 5/03/2010

last updated: _____

area previously shown on map(s)

NOTE: This map was prepared for the use of the Washoe County Assessor for assessment and illustrative purposes only. It does not represent a survey of the premises. No liability is assumed as to the sufficiency or accuracy of the data delineated hereon.