

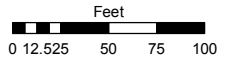
**(#79)**  
**NEWTOWN TRACT**  
 A POR OF THE SW 1/4 OF SEC. 5,  
 T19N - R20E

Assessor's Map Number

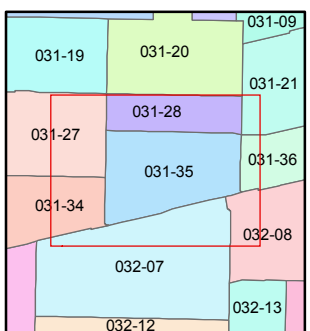
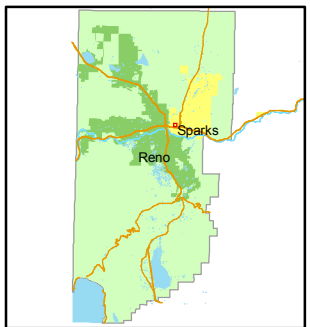
**031-35**

STATE OF NEVADA  
**WASHOE COUNTY**  
**ASSESSOR'S OFFICE**  
 Joshua G. Wilson, Assessor

1001 East Ninth Street  
 Building D  
 Reno, Nevada 89512  
 (775) 328-2231



1 inch = 100 feet



created by: NLH 4/14/2010

last updated: NLH 3/07/11

area previously shown on map(s)

NOTE: This map was prepared for the use of the Washoe County Assessor for assessment and illustrative purposes only. It does not represent a survey of the premises. No liability is assumed as to the sufficiency or accuracy of the data delineated herein.

