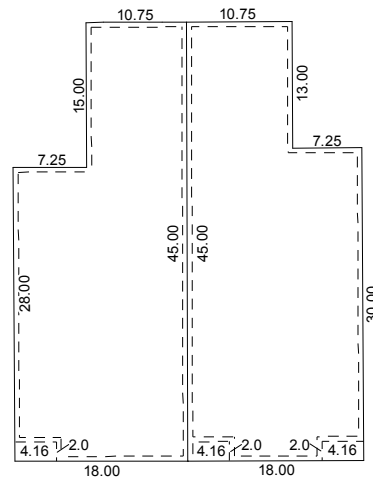


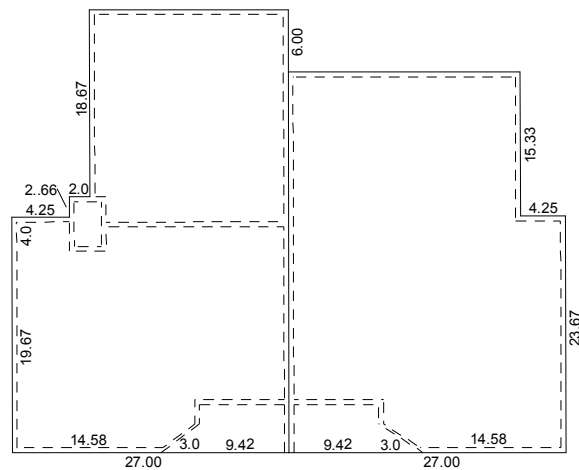
(#1793)
SILVER STATE CONDOMINIUMS
 A CONDOMINIUM SUBDIVISION

A POR. OF THE SE 1/4 OF THE NW 1/4 OF SEC. 5,
 T19N - R20E

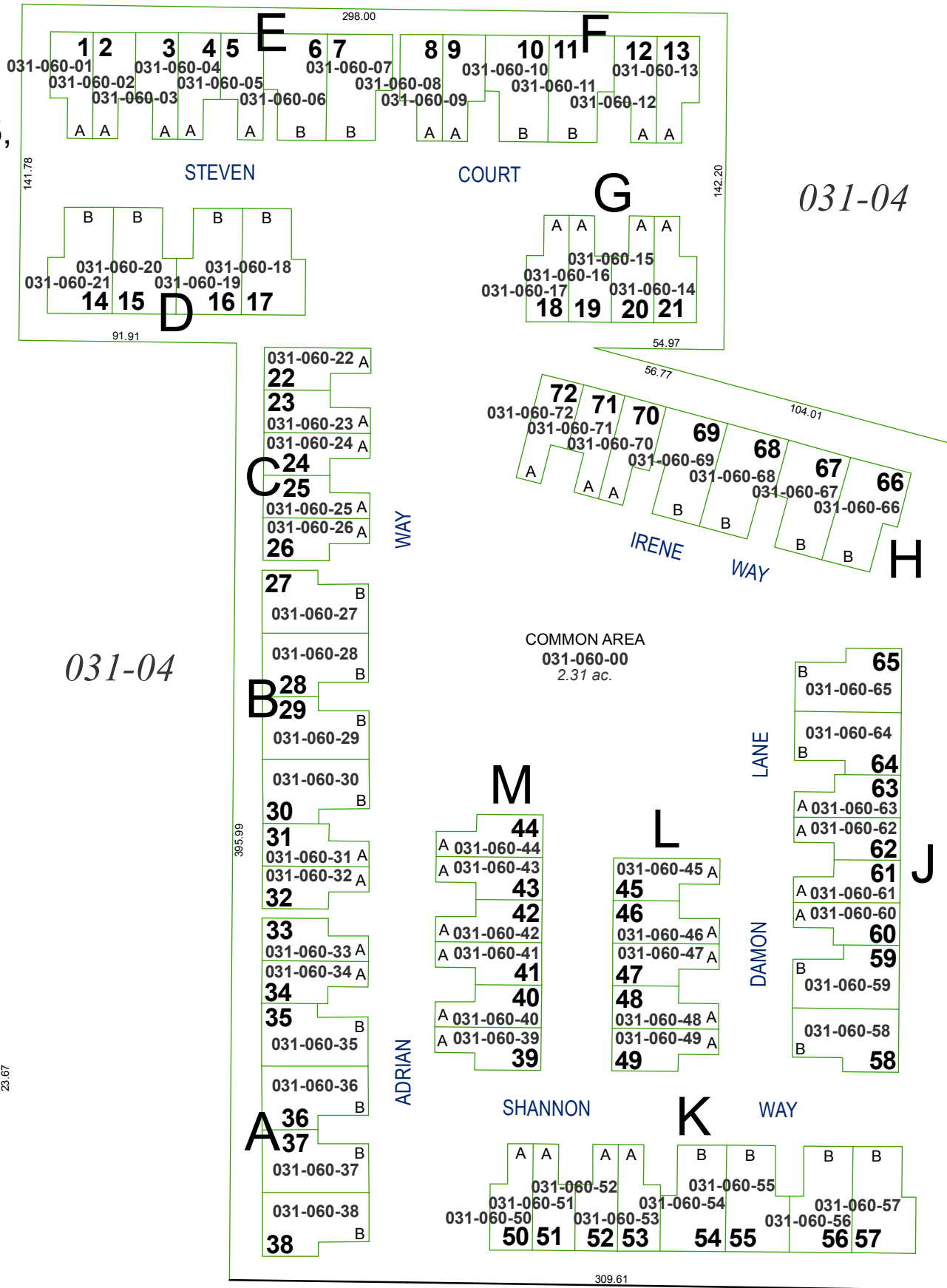
UNDIVIDED 1/2 INTEREST
 IN THE COMMON AREA



TYPICAL PLAN A
 (Not to Scale)



TYPICAL PLAN B
 (Not to Scale)

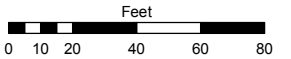


Assessor's Map Number

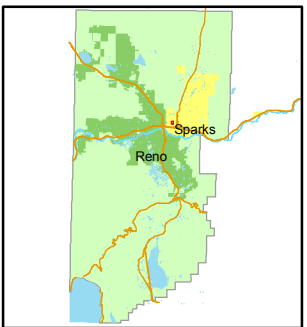
031-06

STATE OF NEVADA
WASHOE COUNTY
ASSESSOR'S OFFICE
 Joshua G. Wilson, Assessor

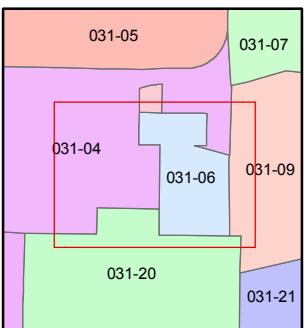
1001 East Ninth Street
 Building D
 Reno, Nevada 89512
 (775) 328-2231



1 inch = 60 feet



031-09



created by: NLH 3/15/2010

last updated: _____

area previously shown on map(s) _____

NOTE: This map was prepared for the use of the Washoe County Assessor for assessment and illustrative purposes only. It does not represent a survey of the premises. No liability is assumed as to the sufficiency or accuracy of the data delineated hereon.

031-20