

027-56

027-55

WEDEKIND ROAD

STREET

CITY OF SPARKS
WASHOE COUNTY

LANE

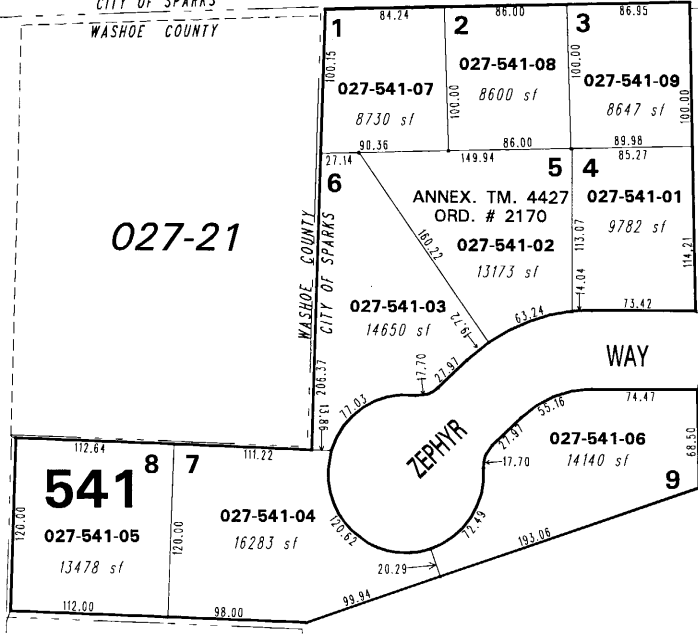
027-21

027-21

18TH

BOOK 26

SULLIVAN



027-21

(#4523)
GIBBONS ESTATES
 POR. SW 1/4 OF SEC. 32
 T20N - R20E



1" = 100'



NOTE: This map is prepared for the use of the Washoe County Assessor for assessment and illustrative purposes only. It does not represent a survey of the premises. No liability is assumed as to the sufficiency or the accuracy of the data delineated hereon.

Office of Washoe County Assessor, Nevada - Joshua G. Wilson

This area previously shown on 027-21

NOTE: Areas of parcels which are less than 2 acres are shown in square feet.

Drawn by PK 08/29/05
 Revised NLH 1/08/08