

(#857)

PARK VERDE SUBDIVISION

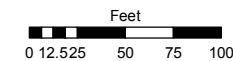
A POR. OF THE NW 1/4 OF THE NW 1/4 OF SEC. 5,
T19N - R20E

STATE OF NEVADA

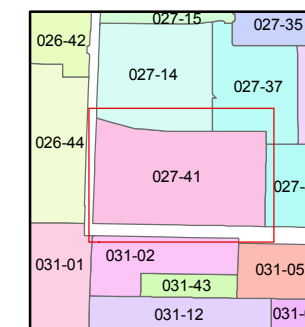
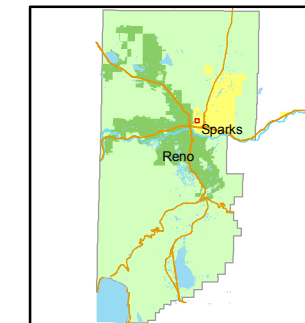
WASHOE COUNTY
ASSESSOR'S OFFICE

Joshua G. Wilson, Assessor

1001 East Ninth Street
Building D
Reno, Nevada 89512
(775) 328-2231



1 inch = 100 feet

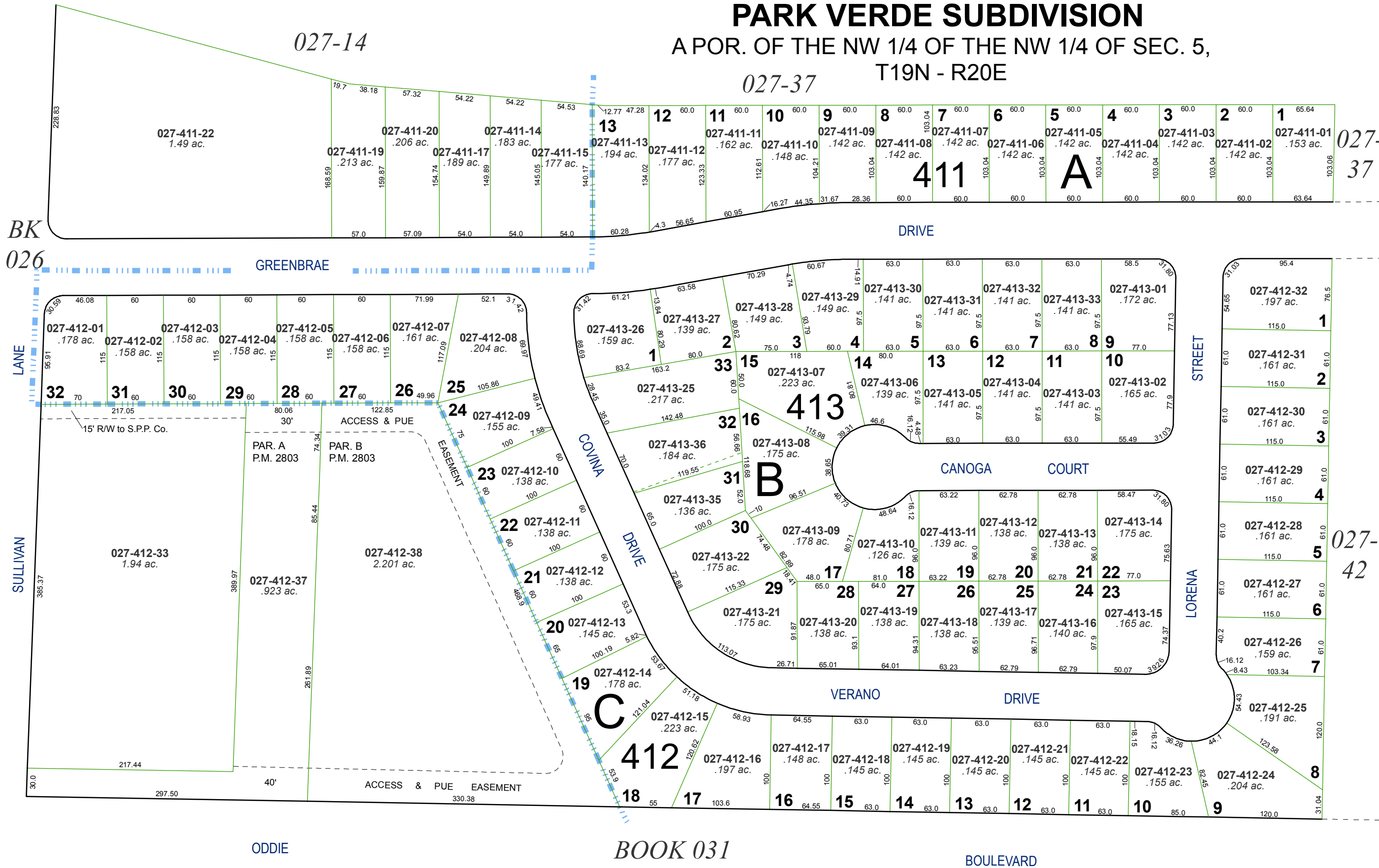


created by: NLH 3/10/2010

last updated: _____

area previously shown on map(s) _____

NOTE: This map was prepared for the use of the Washoe County Assessor for assessment and illustrative purposes only. It does not represent a survey of the premises. No liability is assumed as to the sufficiency or accuracy of the data delineated hereon.



BK
026

SULLIVAN
LANE

GREENBRAE
DRIVE

COVINA
DRIVE

DRIVE

CANOGA
COURT

VERANO
DRIVE

STREET

LORENA
STREET

ODDIE

BOOK 031

BOULEVARD