

PORTION NW⁴ SEC. 5 T19N R20E
PORTION SW⁴ SEC. 32 T20N R20E

15

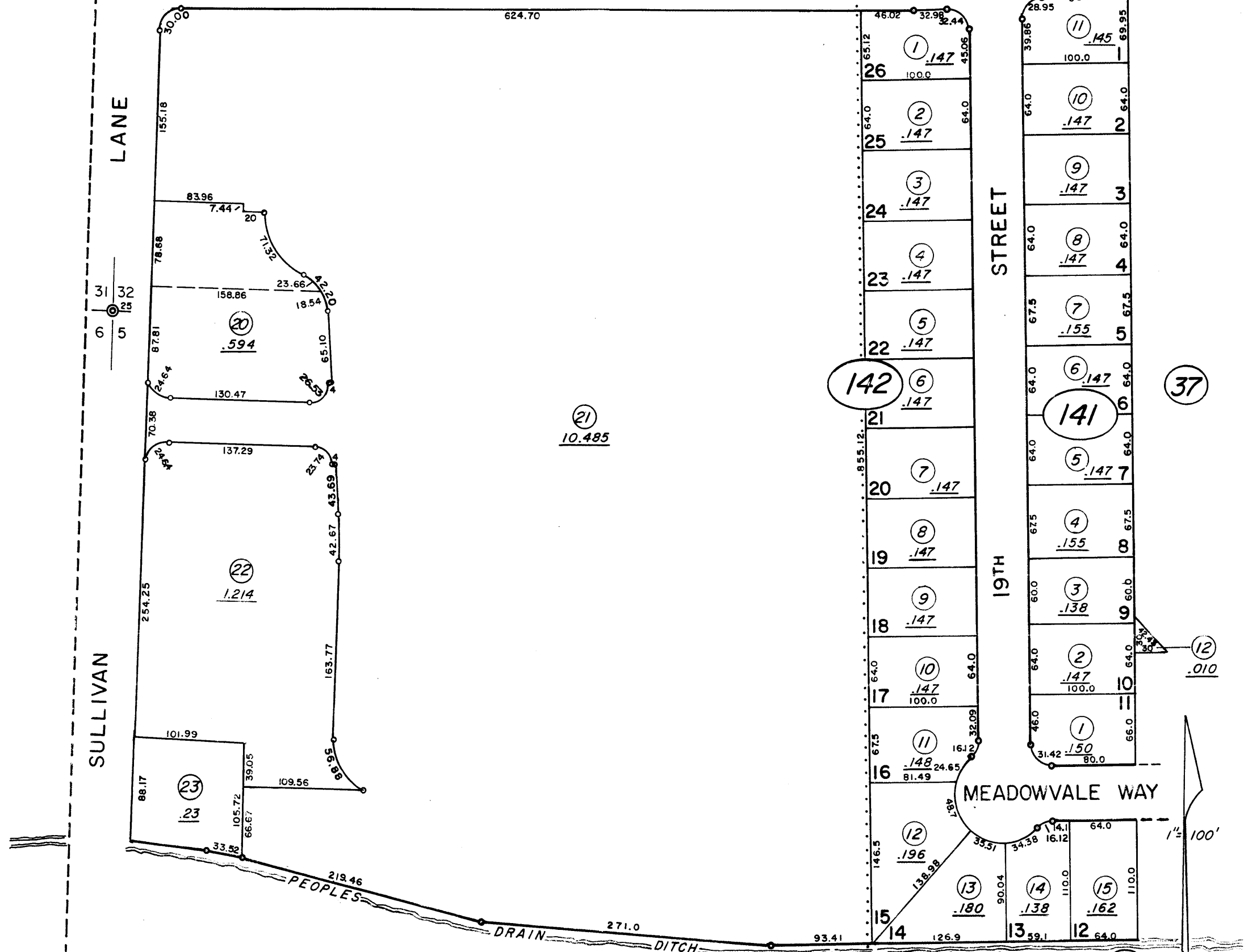
(#1250) 27-14
MEADOWVALE
UNIT No. 11

BYRD DRIVE

SULLIVAN LANE

STREET

MEADOWVALE WAY



BOOK 26

NOTE: This Map is prepared for the use of the Washoe County Assessor, for Assessment and Illustrative purposes only. It does not represent survey of the Premises. No Liability is assumed as to the sufficiency or accuracy of the Date delineated hereon.

Assessor's Map County of Washoe, Nev. **41** 50/6/72
NOTE - ASSESSOR'S BLOCK NUMBERS SHOWN IN ELLIPSES
ASSESSOR'S PARCEL NUMBERS SHOWN IN CIRCLES
REVISED 4/80
TWT R/R/00