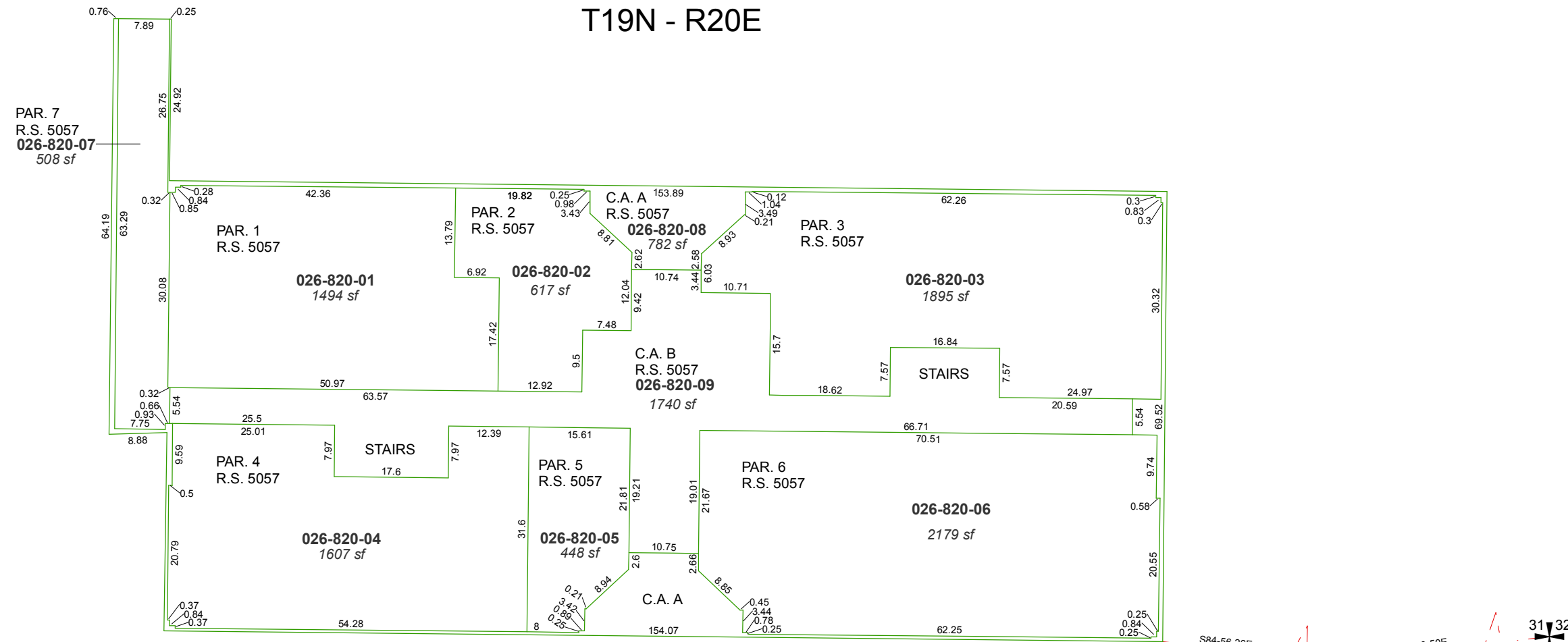
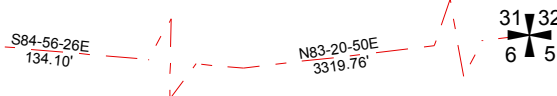


A PORTION OF THE NW 1/4 OF SEC. 6  
T19N - R20E



FIRST FLOOR

SEE PAGE 026-82-S1 & S2 FOR  
THE SECOND AND THIRD FLOORS  
OF THIS BUILDING



C.A. = COMMON AREA

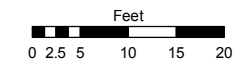
FANTASTIC DRIVE

SILVERADA BLVD.

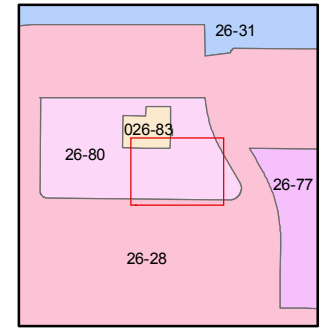
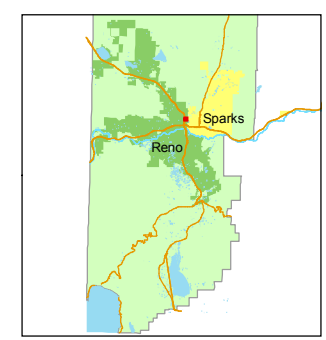
Assessor's Map Number  
**026-82**

STATE OF NEVADA  
**WASHOE COUNTY**  
ASSESSOR'S OFFICE  
Joshua G. Wilson, Assessor

1001 East Ninth Street  
Building D  
Reno, Nevada 89512  
(775) 328-2231



1 inch = 20 feet



created by: TWT 1/14/2010

last updated: \_\_\_\_\_

area previously shown on map(s)  
026-80

NOTE: This map was prepared for the use of the Washoe County Assessor for assessment and illustrative purposes only. It does not represent a survey of the premises. No liability is assumed as to the sufficiency or accuracy of the data delineated hereon.