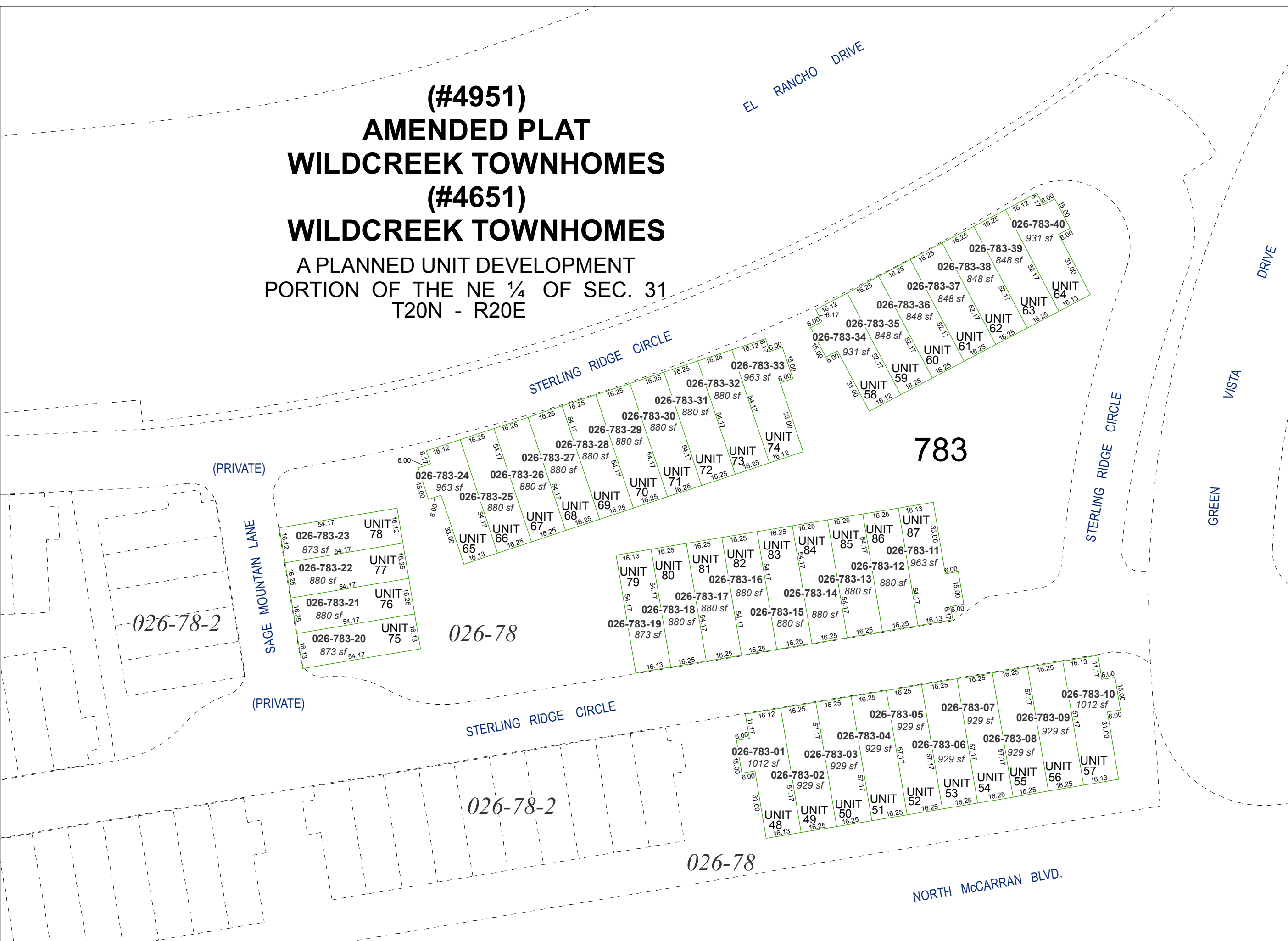
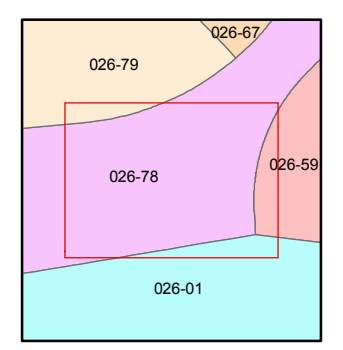
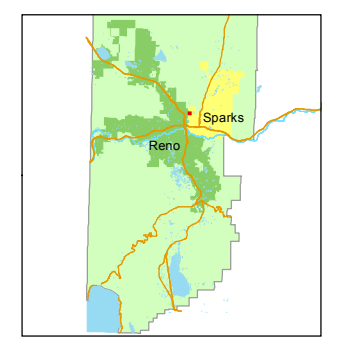
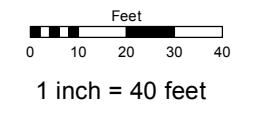


(#4951)
AMENDED PLAT
WILDCREEK TOWNHOMES
(#4651)
WILDCREEK TOWNHOMES
 A PLANNED UNIT DEVELOPMENT
 PORTION OF THE NE ¼ OF SEC. 31
 T20N - R20E



Assessor's Map Number
026-78-S3

STATE OF NEVADA
WASHOE COUNTY
ASSESSOR'S OFFICE
 Joshua G. Wilson, Assessor
 1001 East Ninth Street
 Building D
 Reno, Nevada 89512
 (775) 328-2231



created by: CFB 02/06/2012
 last updated: _____
 area previously shown on map(s) _____

NOTE: This map was prepared for the use of the Washoe County Assessor for assessment and illustrative purposes only. It does not represent a survey of the premises. No liability is assumed as to the sufficiency or accuracy of the data delineated hereon.