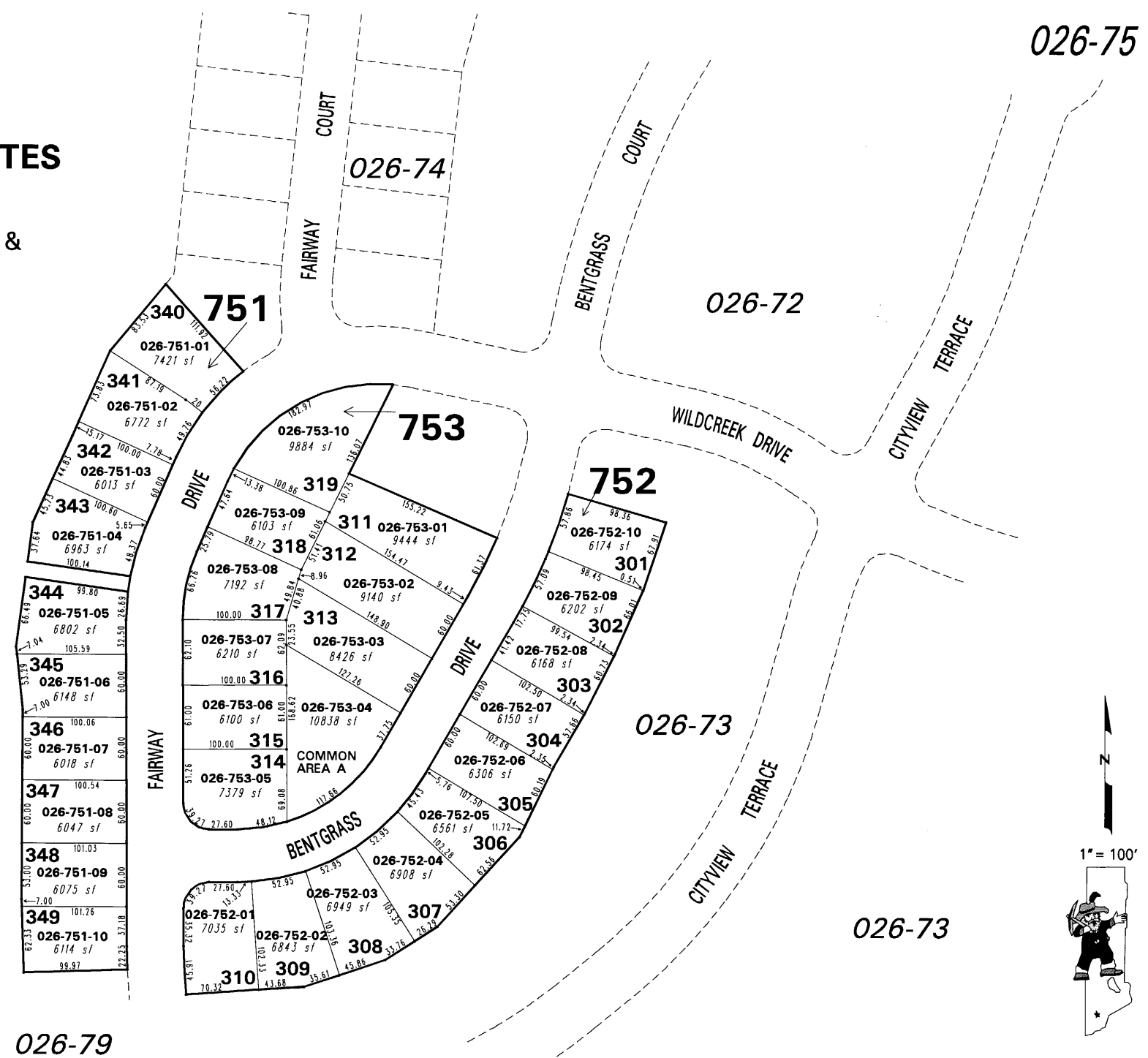


**(#4418)
WILDCREEK ESTATES
UNIT 3**

POR. SE 1/4 SEC. 30 &
POR. N 1/2 SEC. 31
T20N - R20E



026-71

026-72

026-73

026-73

026-79

NOTE: This map is prepared for the use of the Washoe County Assessor for assessment and illustrative purposes only. It does not represent a survey of the premises. No liability is assumed as to the sufficiency or the accuracy of the data delineated hereon.

Office of Washoe County Assessor, Nevada - Joshua G. Wilson

This area previously shown on 026-71

NOTE: Areas of parcels which are less than 2 acres are shown in square feet.

Drawn by PK 12/29/04
 Revised NLH 07/11/07

ARC/INFO 9.2 WINDOWS 2000 5.0

