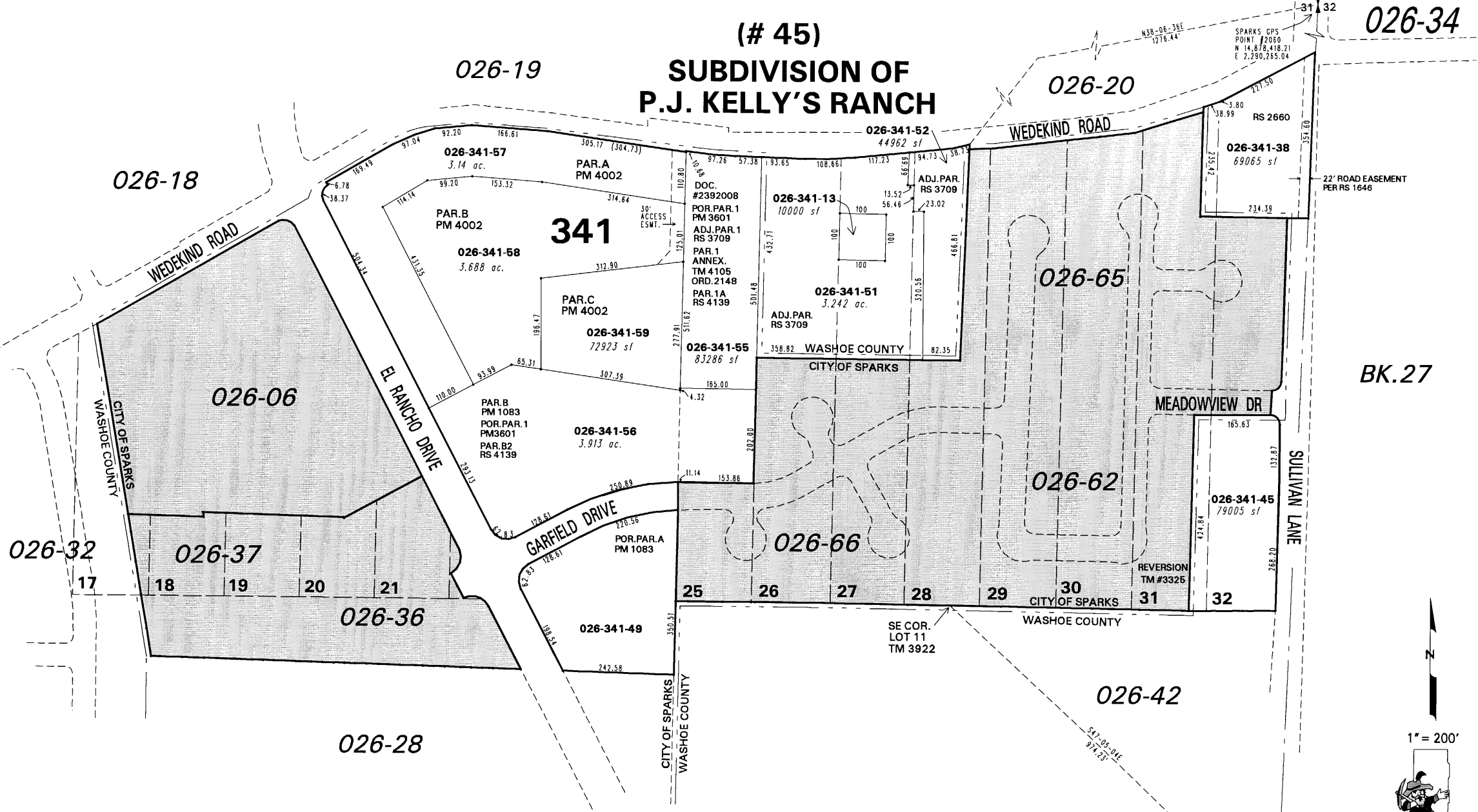


**(# 45)
SUBDIVISION OF
P.J. KELLY'S RANCH**



**POR. E 1/2 SECTION 31
T20N - R20E**

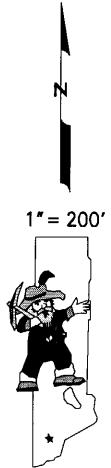
This area previously shown on _____

NOTE: Areas of parcels which are less than 2 acres are shown in square feet.

NOTE: This map is prepared for the use of the Washoe County Assessor for assessment and illustrative purposes only. It does not represent a survey of the premises. No liability is assumed as to the sufficiency or the accuracy of the data delineated hereon.

Office of Washoe County Assessor, Nevada - Robert W. McGowan

Drawn by	HCS 08/28/02
Revised	HCS 9/23/02* HCS 5/15/03
	CEB 7/25/2006



SPARKS GPS POINT #2060
N 14.876,418.21
E 2,290,263.04

SPARKS GPS POINT #2003
N 14.815,756.44
E 2,291,149.05