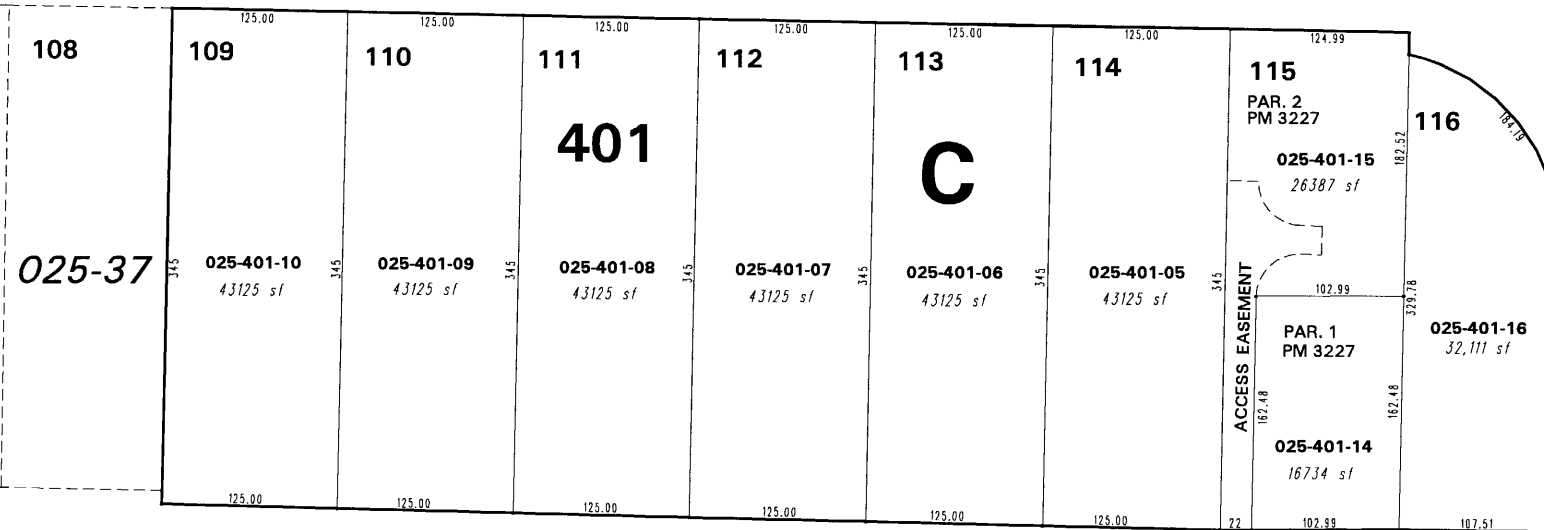


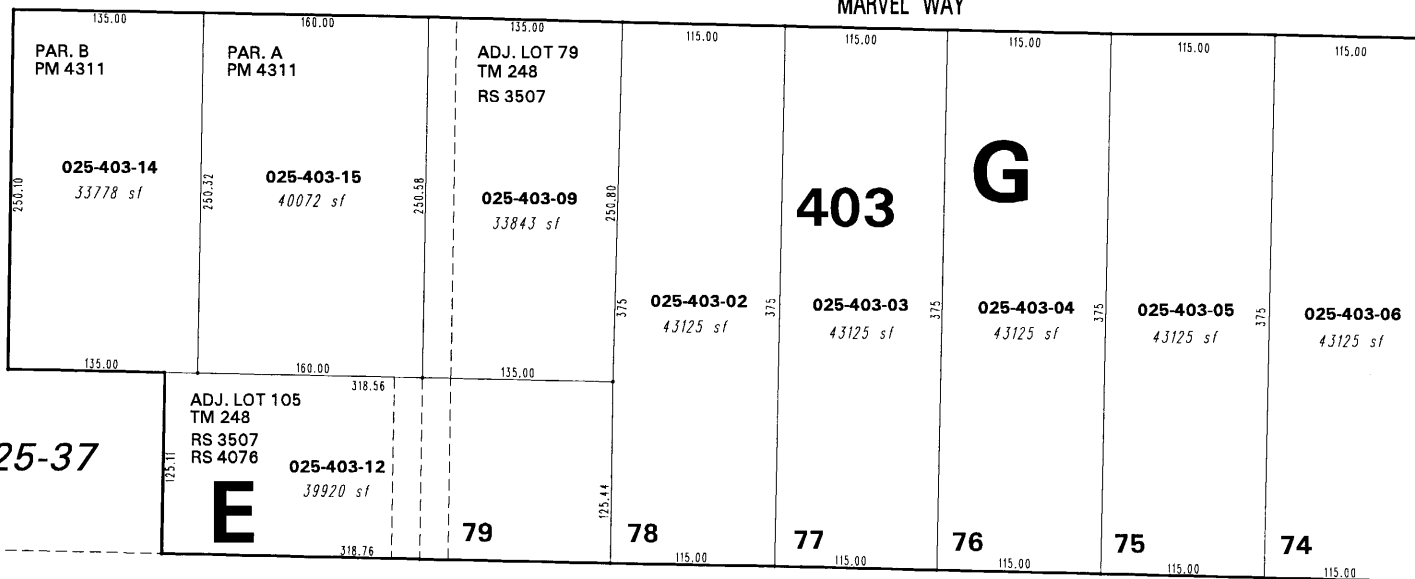
Mc CARRAN BOULEVARD



(#248)
HOME GARDENS
 POR. SEC. 31, T19N - R20E

025-38

MARVEL WAY



TYRONE ROAD

025-38

ANNEX. TM 3659
 ORD. 4969
 (Lots 75, 76, 78, 106, 107)

025-64

This area previously shown on 40-11

025-37

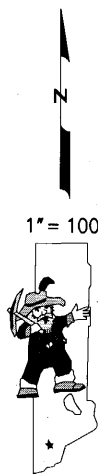
025-37

025-55

NOTE: This map is prepared for the use of the Washoe County Assessor for assessment and illustrative purposes only. It does not represent a survey of the premises. No liability is assumed as to the sufficiency or the accuracy of the data delineated hereon.

Office of Washoe County Assessor, Nevada - Joshua G. Wilson

NOTE: Areas of parcels which are less than 2 acres are shown in square feet.



Drawn by HCS 07/02/02
 Revised CFB 10/8/2005 CFB 4/28/2006
CFB 10/12/2006 NLH 10/16/07