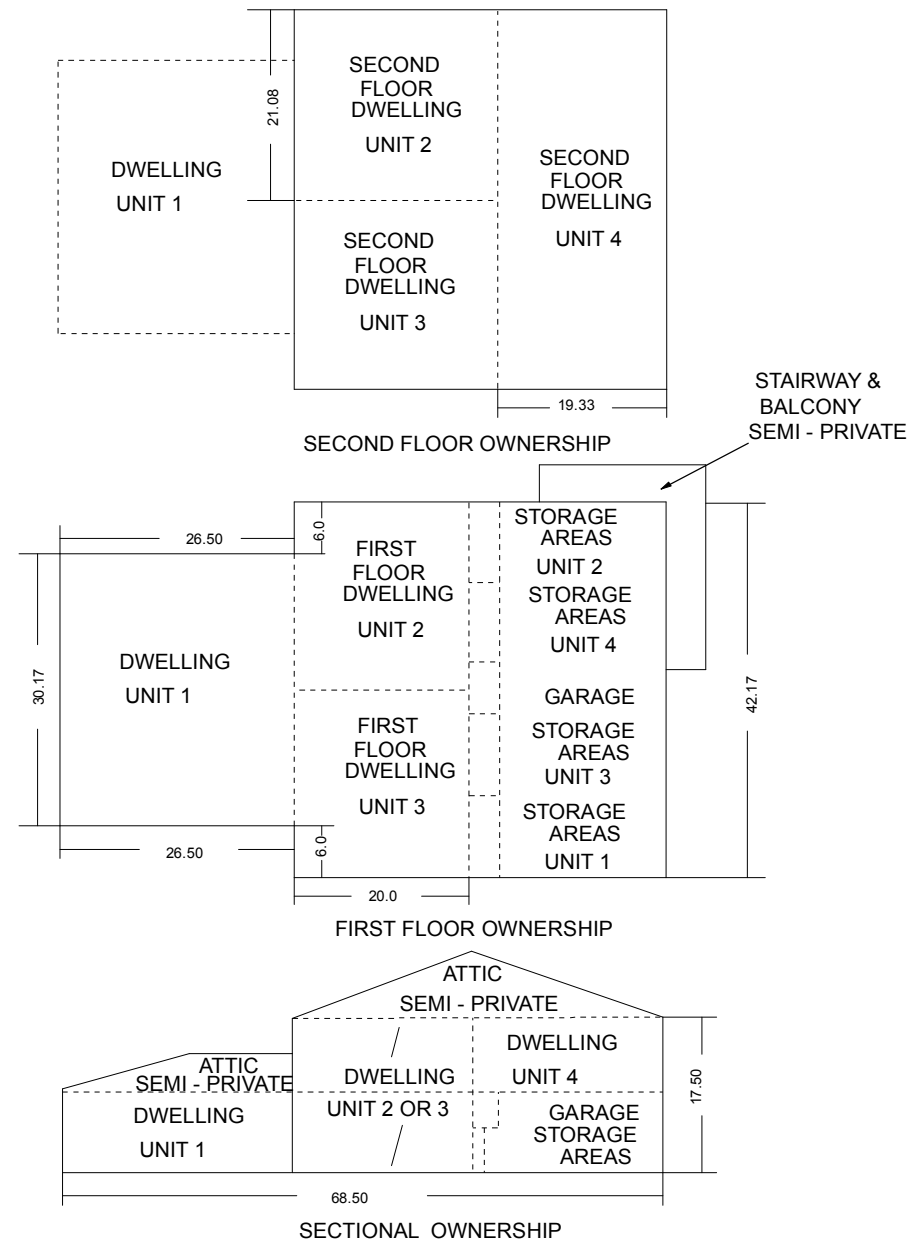
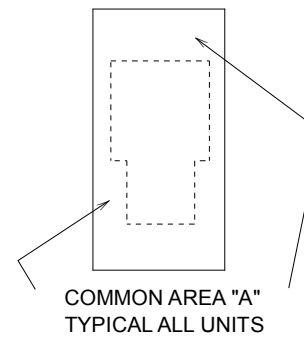


(#1152)
AMENDED SMITHRIDGE GREENS UNIT NO. 1
 A CONDOMINIUM SUBDIVISION
 PORTION OF THE SE 1/4 OF THE SW 1/4 OF SECTION 30
 T19N - R20E



TYPICAL BUILDING DETAILS FOR ALL UNITS

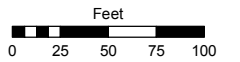


Assessor's Map Number

025-11-S3

STATE OF NEVADA
WASHOE COUNTY
 ASSESSOR'S OFFICE
 Joshua G. Wilson, Assessor

1001 East Ninth Street
 Building D
 Reno, Nevada 89512
 (775) 328-2231



1 inch = 100 feet



created by: CFB 05/07/2014

last updated: _____

area previously shown on map(s)

NOTE: This map was prepared for the use of the Washoe County Assessor for assessment and illustrative purposes only. It does not represent a survey of the premises. No liability is assumed as to the sufficiency or accuracy of the data delineated hereon.