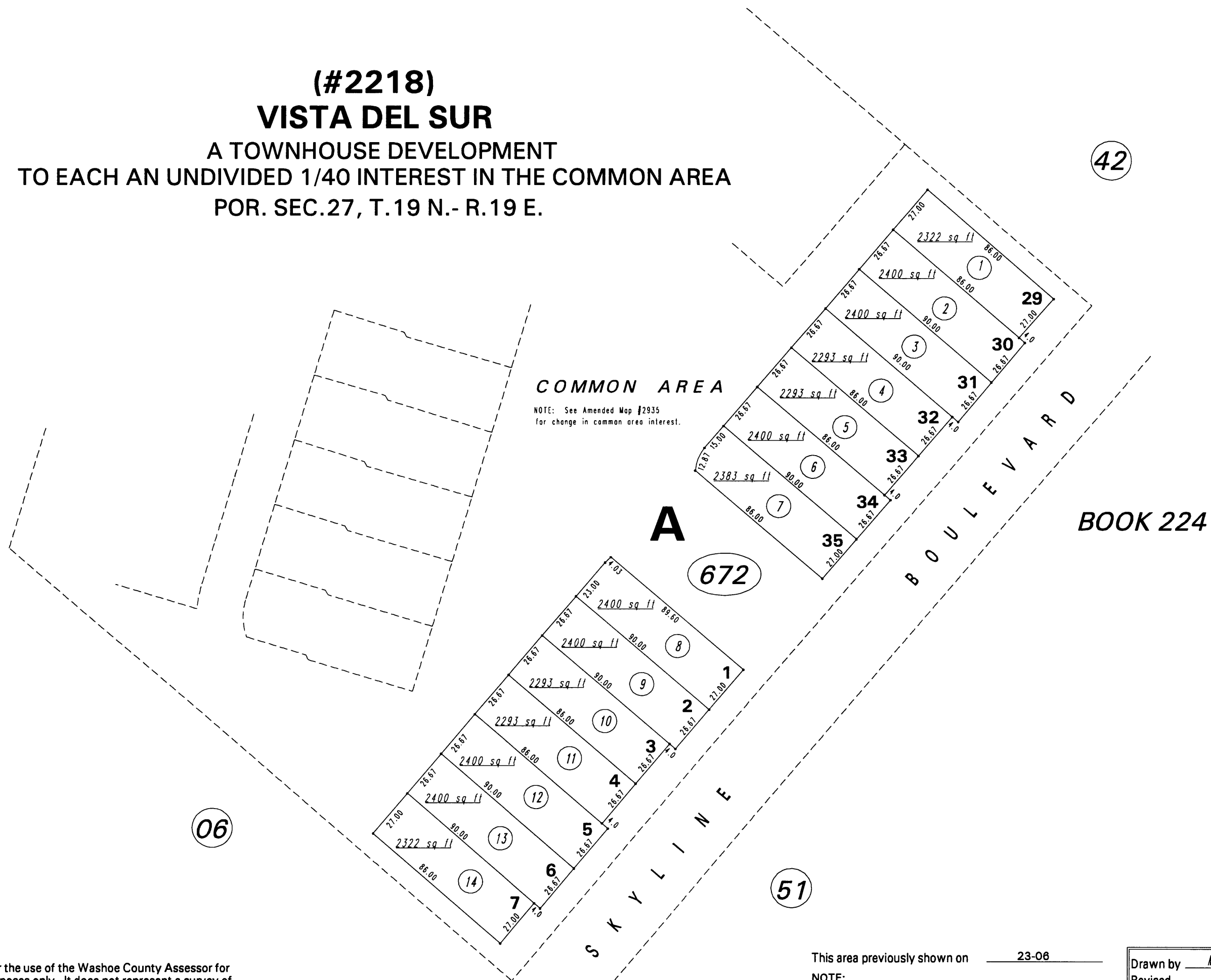


(#2218)
VISTA DEL SUR
A TOWNHOUSE DEVELOPMENT
TO EACH AN UNDIVIDED 1/40 INTEREST IN THE COMMON AREA
POR. SEC.27, T.19 N.- R.19 E.



COMMON AREA

NOTE: See Amended Map #2935
for change in common area interest.

A

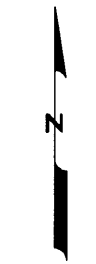
672

BOOK 224

06

51

42



1" = 50'



NOTE: This map is prepared for the use of the Washoe County Assessor for assessment and illustrative purposes only. It does not represent a survey of the premises. No liability is assumed as to the sufficiency or the accuracy of the data delineated hereon.

Office of Washoe County Assessor, Nevada - Robert W. McGowan

This area previously shown on 23-06

NOTE:
ASSESSOR'S BLOCK NUMBERS SHOWN IN ELLIPSES
ASSESSOR'S PARCEL NUMBERS SHOWN IN CIRCLES

Drawn by	<u>MVP 06/02/93</u>
Revised	_____
ARC INFO 7.2.1 WINDOWS NT WORKSTATION 4.0	