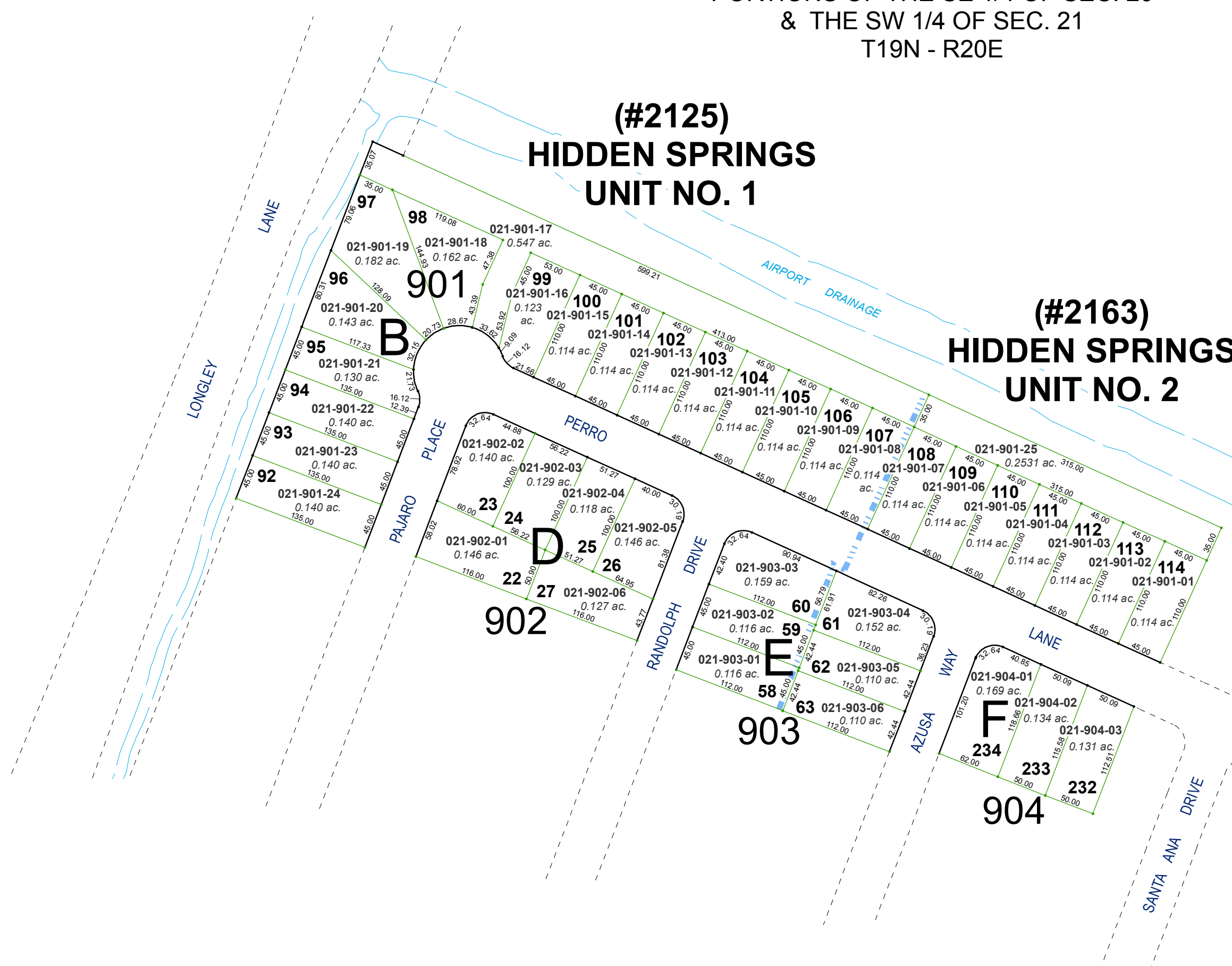


PORTIONS OF THE SE 1/4 OF SEC. 20
& THE SW 1/4 OF SEC. 21
T19N - R20E

**(#2125)
HIDDEN SPRINGS
UNIT NO. 1**

**(#2163)
HIDDEN SPRINGS
UNIT NO. 2**

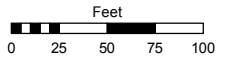


Assessor's Map Number

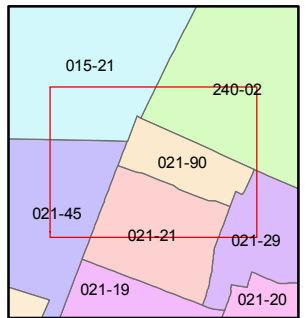
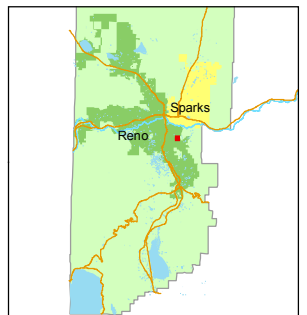
021-90

STATE OF NEVADA
WASHOE COUNTY
ASSESSOR'S OFFICE
Michael E. Clark, Assessor

1001 East Ninth Street
Building D
Reno, Nevada 89512
(775) 328-2231



1 inch = 100 feet



created by: TWT 3/16/2015

last updated: _____

area previously shown on map(s)

021-21

NOTE: This map was prepared for the use of the Washoe County Assessor for assessment and illustrative purposes only. It does not represent a survey of the premises. No liability is assumed as to the sufficiency or accuracy of the data delineated hereon.