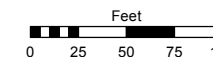


Assessor's Map Number

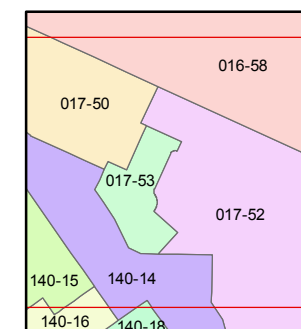
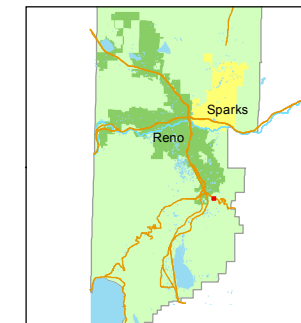
017-53

STATE OF NEVADA
WASHOE COUNTY
ASSESSOR'S OFFICE
Joshua G. Wilson, Assessor

1001 East Ninth Street
Building D
Reno, Nevada 89512
(775) 328-2231



1 inch = 100 feet



created by: CFB 10/24/2012

last updated: CFB 10/24/2012

area previously shown on map(s)

NOTE: This map was prepared for the use of the Washoe County Assessor for assessment and illustrative purposes only. It does not represent a survey of the premises. No liability is assumed as to the sufficiency or accuracy of the data delineated herein.

(#4846)

COTTONWOOD CREEK ESTATES UNIT NO. 8

A COMMON INTEREST COMMUNITY

A POR. OF THE SW 1/4 OF SEC. 27,
T18N - R20E

SHADOW HILLS DRIVE

STATE

TRIUMPH

017-52

ROUTE

017-50

WAY

BIANCHI COURT

801

802

803

804

805

801

802

803

804

805

801

802

803

804

805

801

802

803

804

805

801

802

803

804

805

801

802

803

804

805

801

802

803

804

805

801

802

803

804

805

801

802

803

804

805

801

802

803

804

805

801

802

803

804

805

801

802

803

804

805

801

802

803

804

805

801

802

803

804

805

801

802

803

804

805

801

802

803

804

805

801

802

803

804

805

801

802

803

804

805

801

802

803

804

805

801

802

803

804

805

801

802

803

804

805

801

802

803

804

805

801

802

803

804

805

801

802

803

804

805

801

802

803

804

805

801

802

803

804

805

801

802

803

804

805

801

802

803

804

805

801

802

803

804

805

801

802

803

804

805

801

802

803

804

805

801

802

803

804

805

801

802

803

804

805

801

802

803

804

805

801

802

803

804

805

801

802

803

804

805

801

802

803

804

805

801

802

803

804

805

801

802

803

804

805

801

802

803

804

805

801

802

803

804

805

801

802

803

804

805

801

802

803

804

805

801

802

803

804

805

801

802

803

804

805

801

802

803

804

805

801

802

803

804

805

801

802

803

804

805

801

802

803

804

805

801

802

803

804

805

801

802

803

804

805

801

802

803

804

805

801

802

803

804

805

801

802

803

804

805

801

802

803

804

805

801

802

803

804

805

801

802

803

804

805

801

8