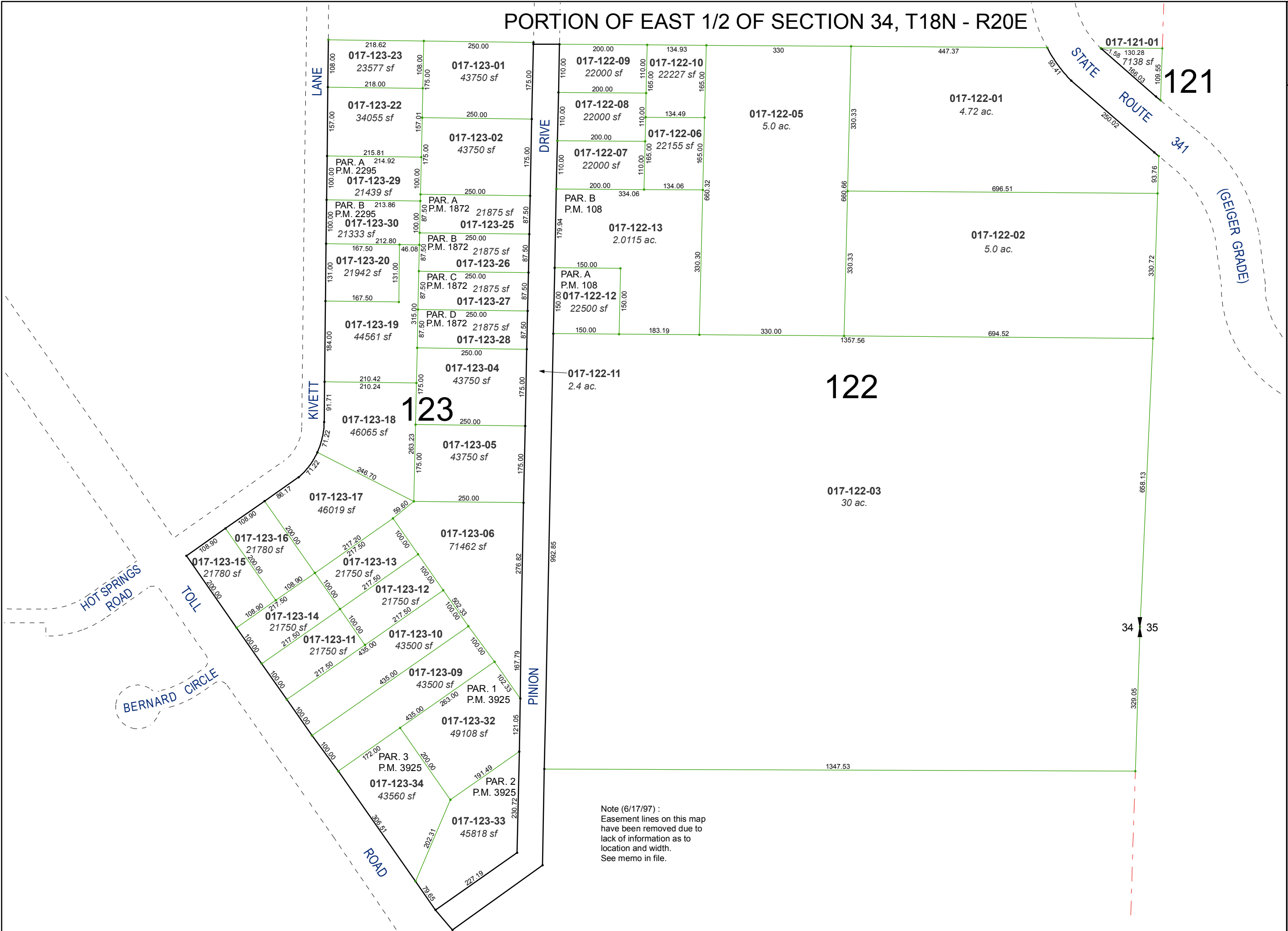


PORTION OF EAST 1/2 OF SECTION 34, T18N - R20E



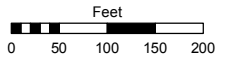
Note (6/17/97) :  
Easement lines on this map  
have been removed due to  
lack of information as to  
location and width.  
See memo in file.

Assessor's Map Number

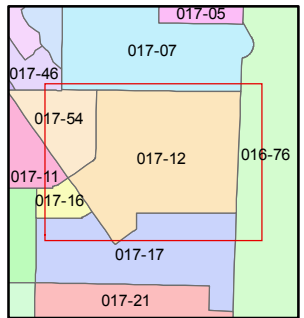
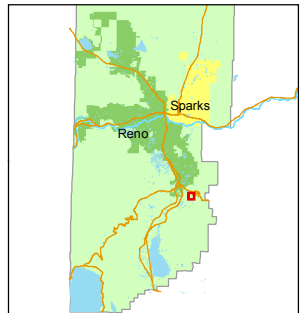
**017-12**

STATE OF NEVADA  
**WASHOE COUNTY**  
ASSESSOR'S OFFICE  
Joshua G. Wilson, Assessor

1001 East Ninth Street  
Building D  
Reno, Nevada 89512  
(775) 328-2231



1 inch = 200 feet



created by: TWT 5/16/2014

last updated: \_\_\_\_\_

area previously shown on map(s) \_\_\_\_\_

NOTE: This map was prepared for the use of the Washoe County Assessor for assessment and illustrative purposes only. It does not represent a survey of the premises. No liability is assumed as to the sufficiency or accuracy of the data delineated hereon.