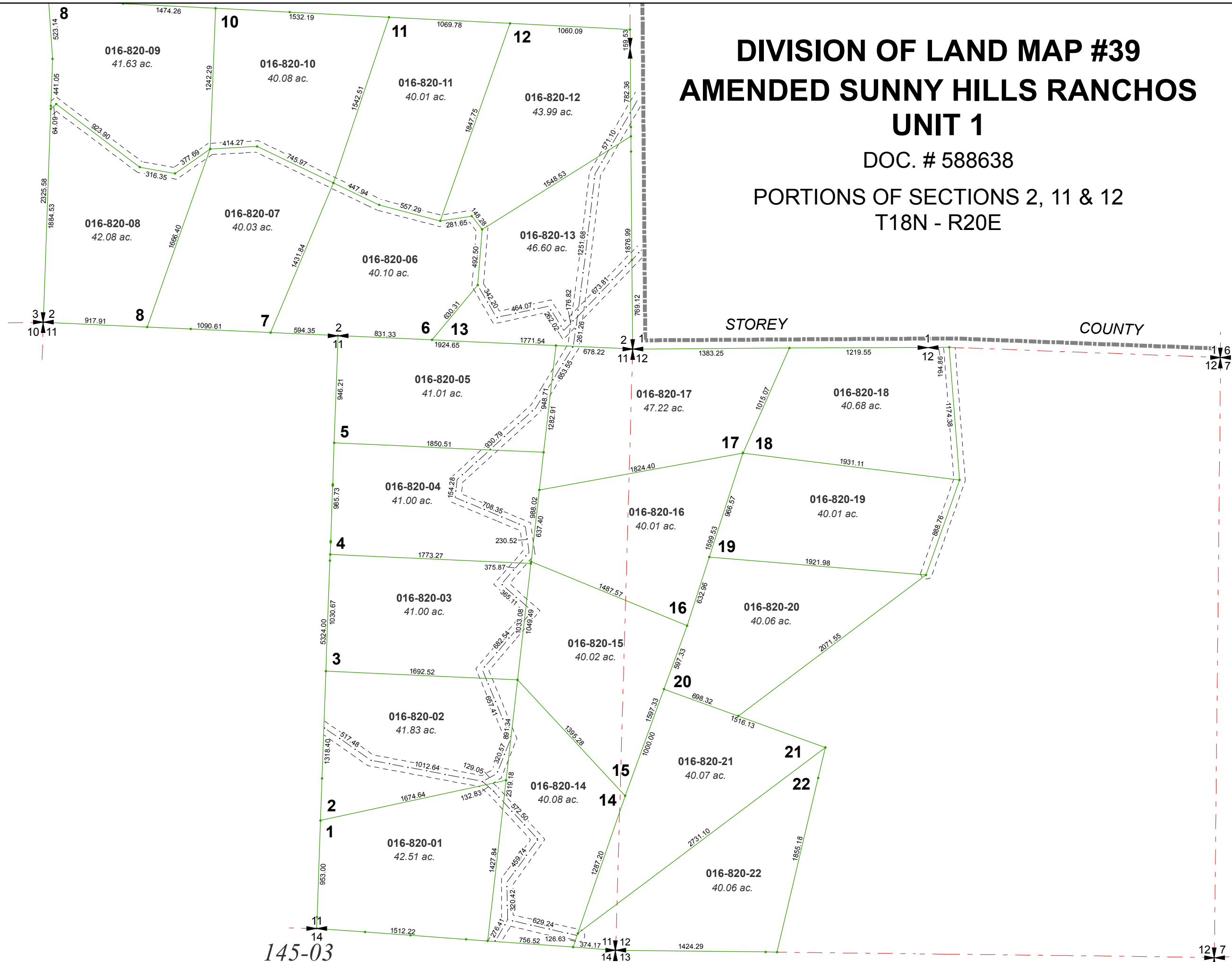


DIVISION OF LAND MAP #39 AMENDED SUNNY HILLS RANCHOS UNIT 1

DOC. # 588638

PORTIONS OF SECTIONS 2, 11 & 12
T18N - R20E

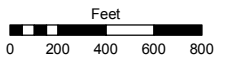


Assessor's Map Number

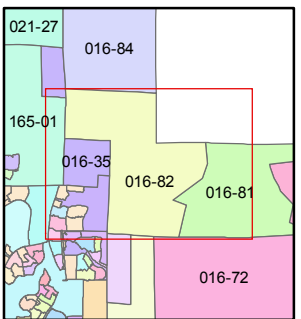
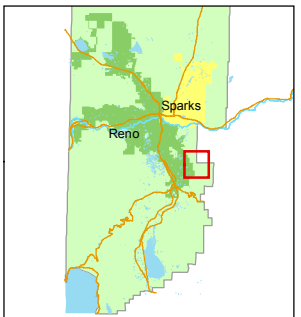
016-82

STATE OF NEVADA
WASHOE COUNTY
ASSESSOR'S OFFICE
Joshua G. Wilson, Assessor

1001 East Ninth Street
Building D
Reno, Nevada 89512
(775) 328-2231



1 inch = 800 feet



created by: TWT 3/31/2014

last updated: _____

area previously shown on map(s) _____

NOTE: This map was prepared for the use of the Washoe County Assessor for assessment and illustrative purposes only. It does not represent a survey of the premises. No liability is assumed as to the sufficiency or accuracy of the data delineated hereon.