

VIRGINIA Foothills Subdivision

A POR. OF THE SE ¼ OF SEC. 22
T18N - R20E

(#890) UNIT NO. 2 (#891) UNIT NO. 3 (#940) UNIT NO. 5

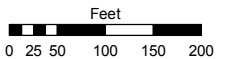
(#906) UNIT NO. 4

Assessor's Map Number

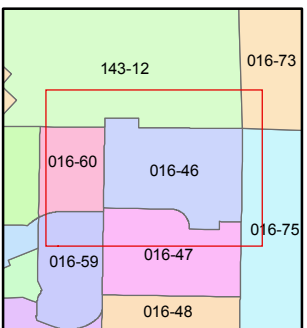
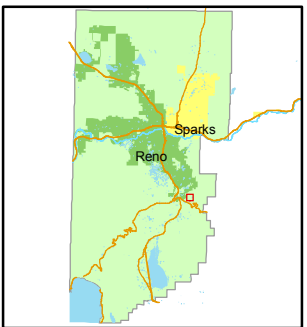
016-46

STATE OF NEVADA
WASHOE COUNTY
ASSESSOR'S OFFICE
Joshua G. Wilson, Assessor

1001 East Ninth Street
Building D
Reno, Nevada 89512
(775) 328-2231



1 inch = 200 feet



created by: NLH 6/30/2010

last updated: _____

area previously shown on map(s) _____

NOTE: This map was prepared for the use of the Washoe County Assessor for assessment and illustrative purposes only. It does not represent a survey of the premises. No liability is assumed as to the sufficiency or accuracy of the data delineated hereon.

22
27

S89-42-10W
883.71'

22
27
23
26

