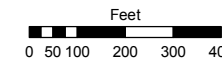


Assessor's Map Number

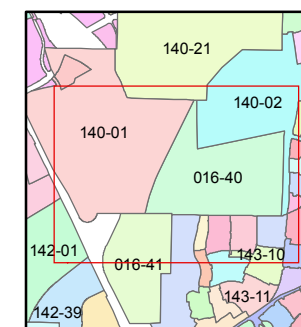
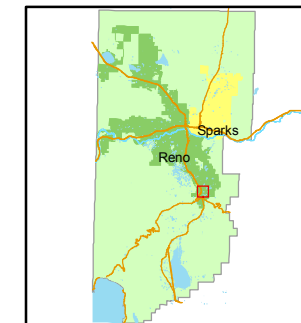
016-40

STATE OF NEVADA
WASHOE COUNTY
ASSESSOR'S OFFICE
Joshua G. Wilson, Assessor

1001 East Ninth Street
Building D
Reno, Nevada 89512
(775) 328-2231



1 inch = 400 feet



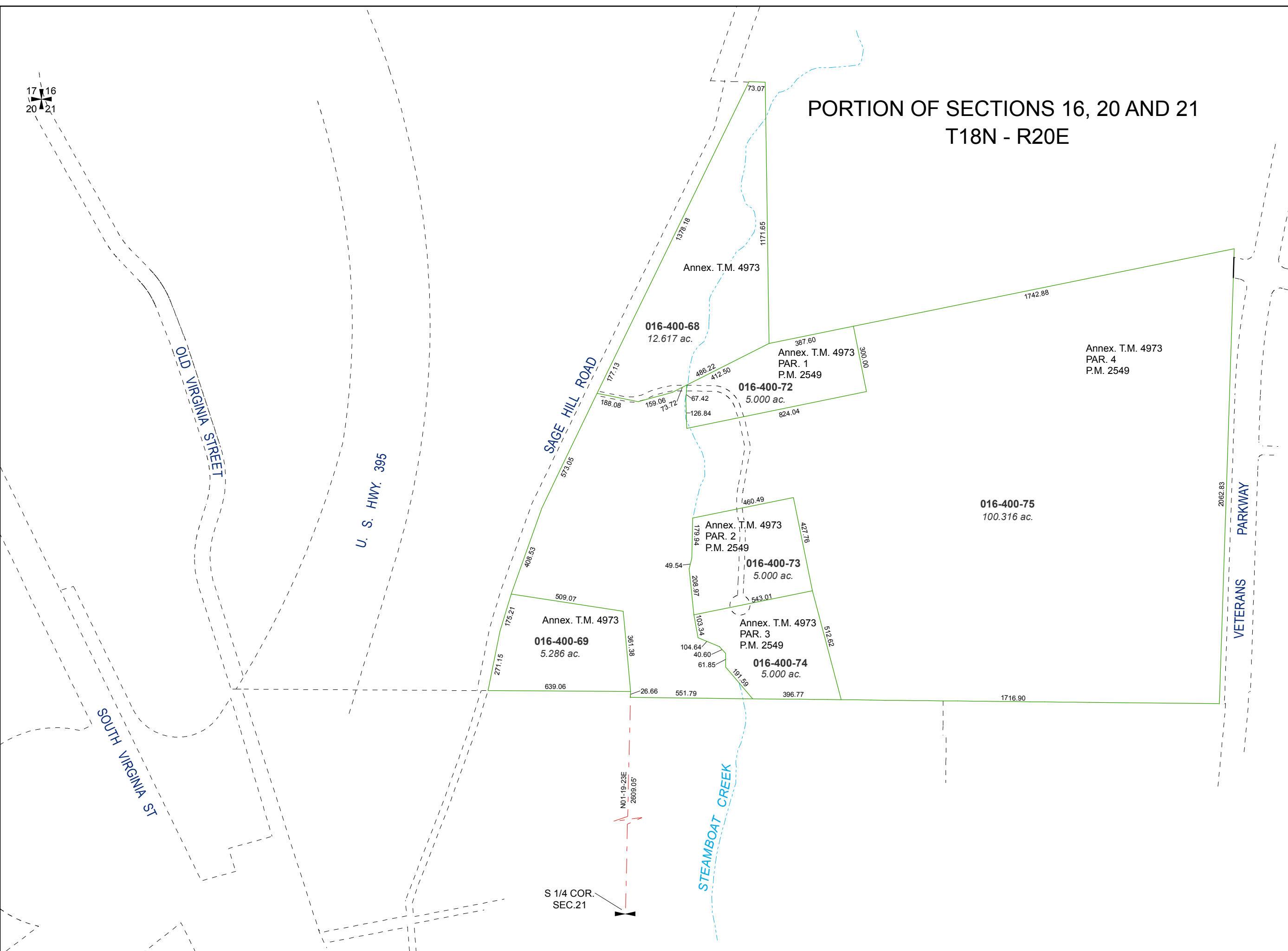
created by: CFB 12/30/2010

last updated: NLH 7/19/11

area previously shown on map(s)

NOTE: This map was prepared for the use of the Washoe County Assessor for assessment and illustrative purposes only. It does not represent a survey of the premises. No liability is assumed as to the sufficiency or accuracy of the data delineated herein.

PORTION OF SECTIONS 16, 20 AND 21 T18N - R20E



S 1/4 COR.
SEC. 21

N01-19-23E
2609.05'