

POR. SW 1/4 SW 1/4 SEC. 14  
AND POR. NW 1/4 NW 1/4 SEC. 23  
T18N - R20E

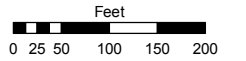
BOOK 140

Assessor's Map Number

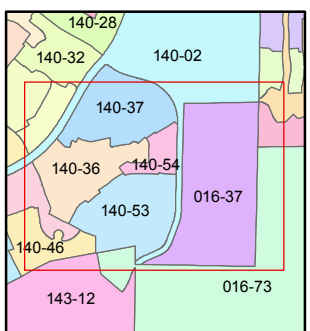
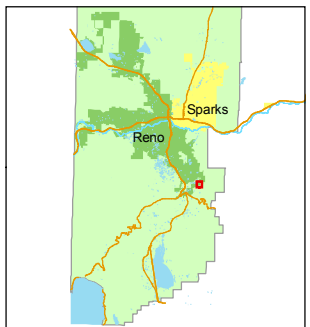
**016-37**

STATE OF NEVADA  
**WASHOE COUNTY**  
ASSESSOR'S OFFICE  
Joshua G. Wilson, Assessor

1001 East Ninth Street  
Building D  
Reno, Nevada 89512  
(775) 328-2231



1 inch = 200 feet



created by: CFB 02/14/2011

last updated: \_\_\_\_\_

area previously shown on map(s)  
\_\_\_\_\_

NOTE: This map was prepared for the use of the Washoe County Assessor for assessment and illustrative purposes only. It does not represent a survey of the premises. No liability is assumed as to the sufficiency or accuracy of the data delineated hereon.

15 14  
22 23

S89-07-10W  
519.77  
(PER P.M. 2444)

BOOK 140

WESTERN SKIES DRIVE

CITY OF RENO

WASHOE CO.

CITY OF RENO

WASHOE CO.

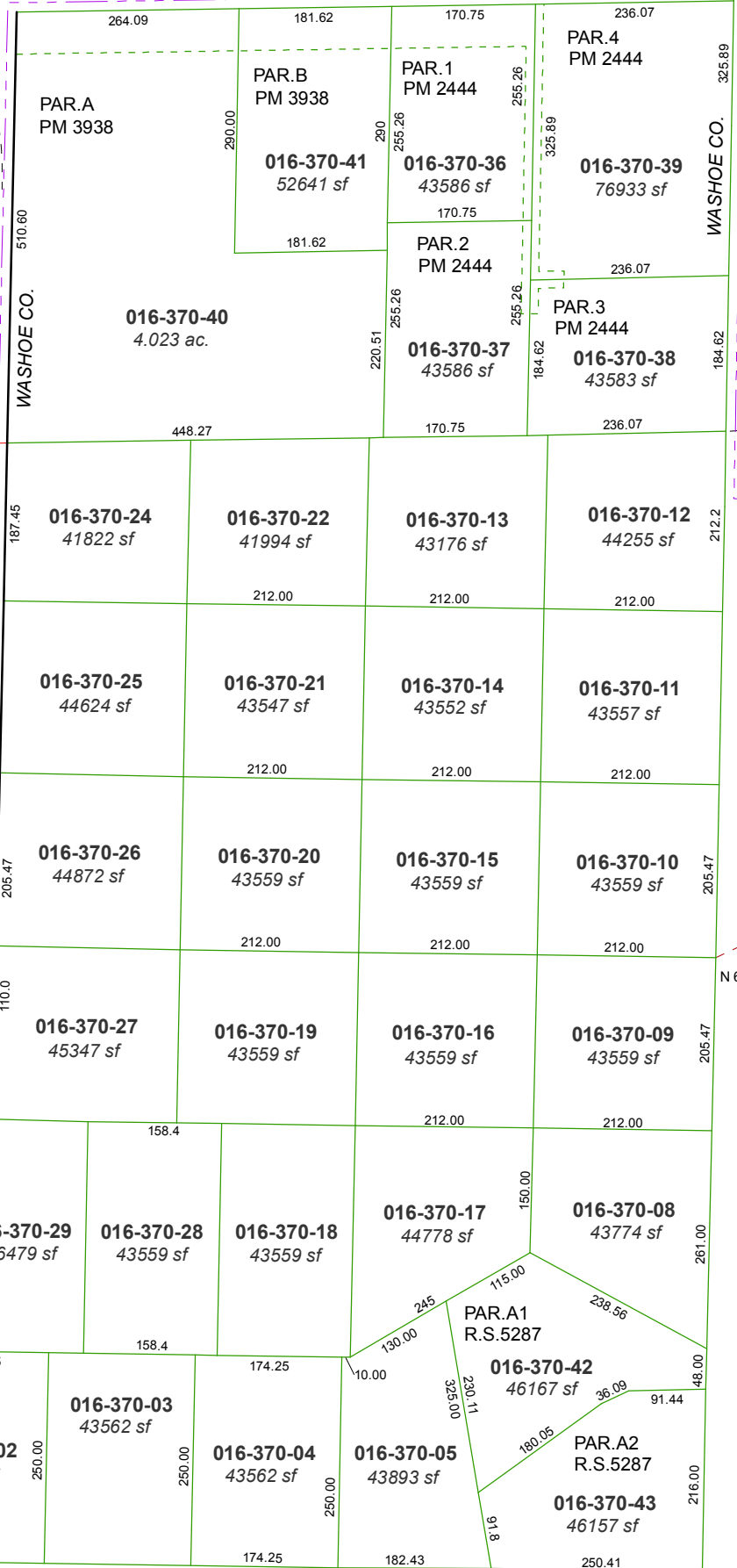
WASHOE CO.

CITY OF RENO

145-12

016-73

N 65°07'02" E 1529.72



264.09

181.62

170.75

236.07

510.60

290.00

290

255.26

325.89

325.89

181.62

170.75

255.26

255.26

184.62

220.51

255.26

184.62

184.62

187.45

448.27

170.75

236.07

212.2

205.47

212.00

212.00

212.00

212.00

205.47

212.00

212.00

212.00

205.47

110.0

212.00

212.00

212.00

205.47

158.4

212.00

212.00

212.00

205.47

158.4

158.4

158.4

150.00

261.00

174.25

158.4

174.25

10.00

48.00

174.25

174.25

10.00

325.00

216.00

174.25

174.25

182.43

250.41

174.25

174.25

182.43

250.41

174.25

174.25

182.43

250.41

174.25

174.25

182.43

250.41

174.25

174.25

182.43

250.41