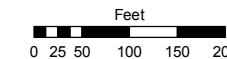


Assessor's Map Number

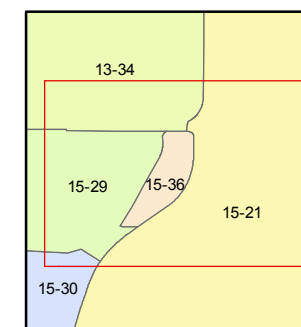
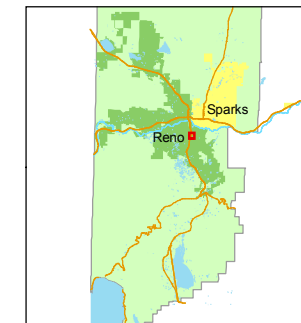
015-36

STATE OF NEVADA
WASHOE COUNTY
ASSESSOR'S OFFICE
Joshua G. Wilson, Assessor

1001 East Ninth Street
Building D
Reno, Nevada 89512
(775) 328-2231



1 inch = 200 feet



created by: CFB 09/29/2009

last updated: _____

area previously shown on map(s)

015-29

NOTE: This map was prepared for the use of the Washoe County Assessor for assessment and illustrative purposes only. It does not represent a survey of the premises. No liability is assumed as to the sufficiency or accuracy of the data delineated hereon.

PORTION OF THE NE ¼ OF SECTION 19
T19N - R20E

013-34

EAST PLUMB LANE

MATLEY LANE

FRONTAGE ROAD

(U.S. 395 FREEWAY)

I-580

N07-55-20E 1138.77'
(Calculated per R/S 4846)

PAR. 1
R/S 4846

015-361-01
7.36 ac.

PAR. 2
R/S 4846

015-361-02
2.60 ac.

361

WAY

AIRPORT

015-21

015-21

015-29

18
19

