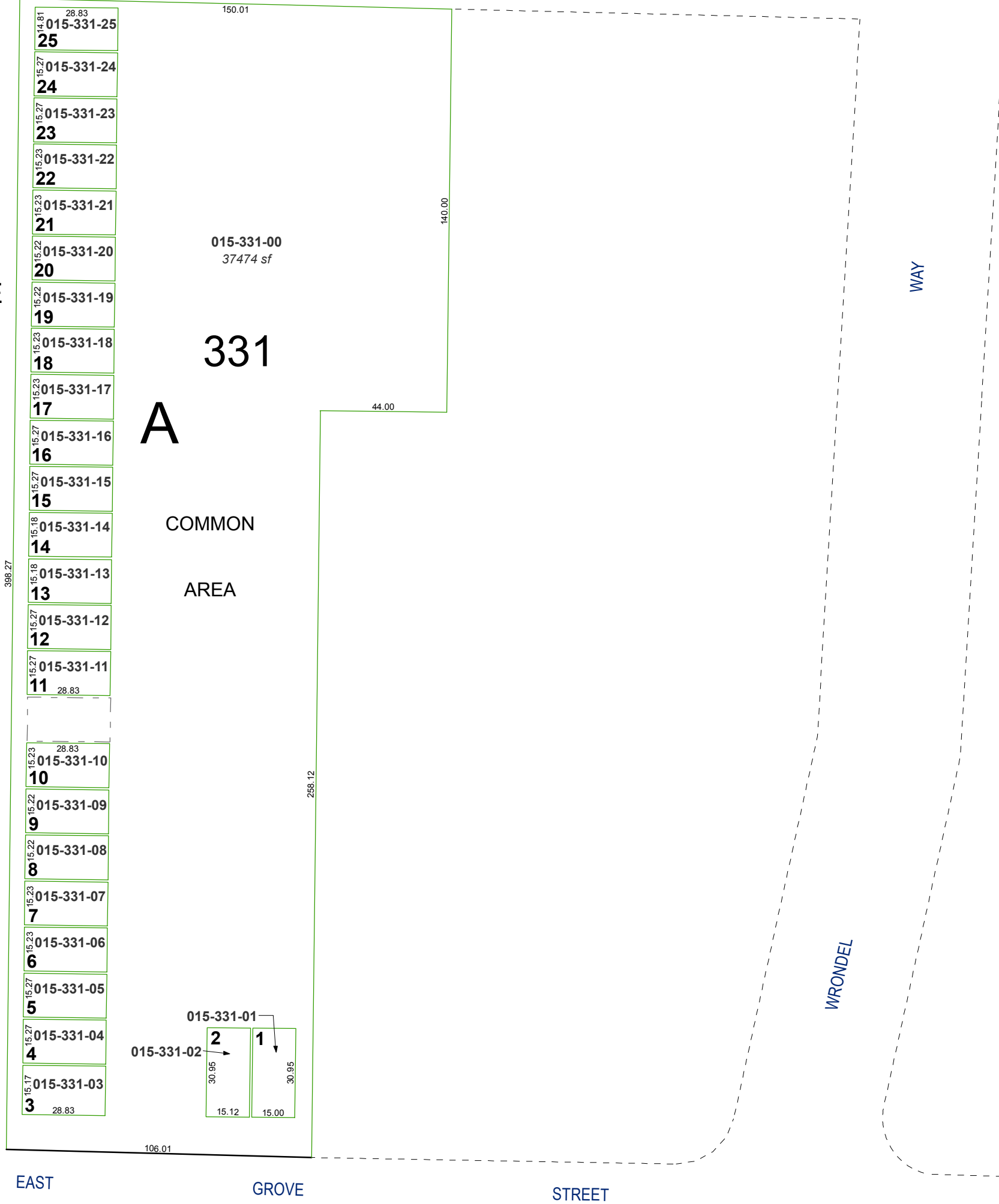


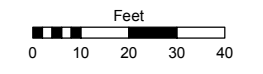
(#2042)
KARA MIA
CONDOMINIUMS
PHASE #1
 A PORTION OF THE NE 1/4
 OF SECTION 24, T19N - R19E
 A 1/51st UNDIVIDED INTEREST
 EACH IN COMMON AREA
 FIRST FLOOR UNITS



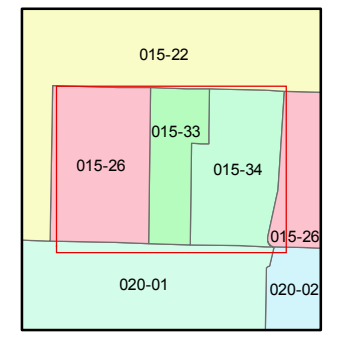
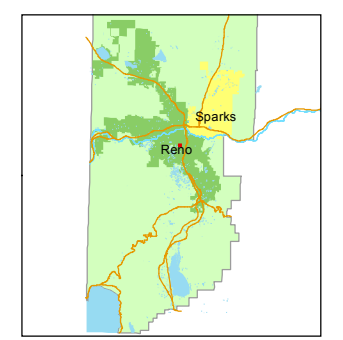
Assessor's Map Number
015-33

STATE OF NEVADA
WASHOE COUNTY
ASSESSOR'S OFFICE
 Joshua G. Wilson, Assessor

1001 East Ninth Street
 Building D
 Reno, Nevada 89512
 (775) 328-2231



1 inch = 40 feet



created by: TWT 3/12/2014

last updated: _____

area previously shown on map(s)
015-26

NOTE: This map was prepared for the use of the Washoe County Assessor for assessment and illustrative purposes only. It does not represent a survey of the premises. No liability is assumed as to the sufficiency or accuracy of the data delineated hereon.