

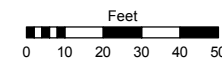
# (#1893) AMENDED SIERRA CEDARS CONDOMINIUMS

SECOND FLOOR UNITS

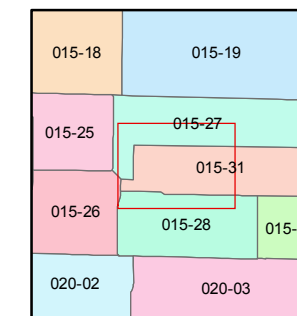
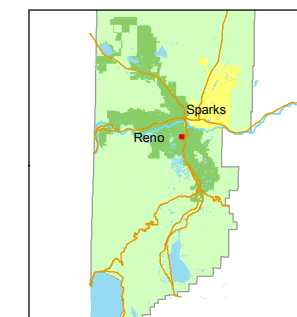
TO EACH A 1/176th UNDIVIDED  
INTEREST IN COMMON AREA

STATE OF NEVADA  
**WASHOE COUNTY**  
ASSESSOR'S OFFICE  
Joshua G. Wilson, Assessor

1001 East Ninth Street  
Building D  
Reno, Nevada 89512  
(775) 328-2231



1 inch = 50 feet



created by: TWT 3/10/2014

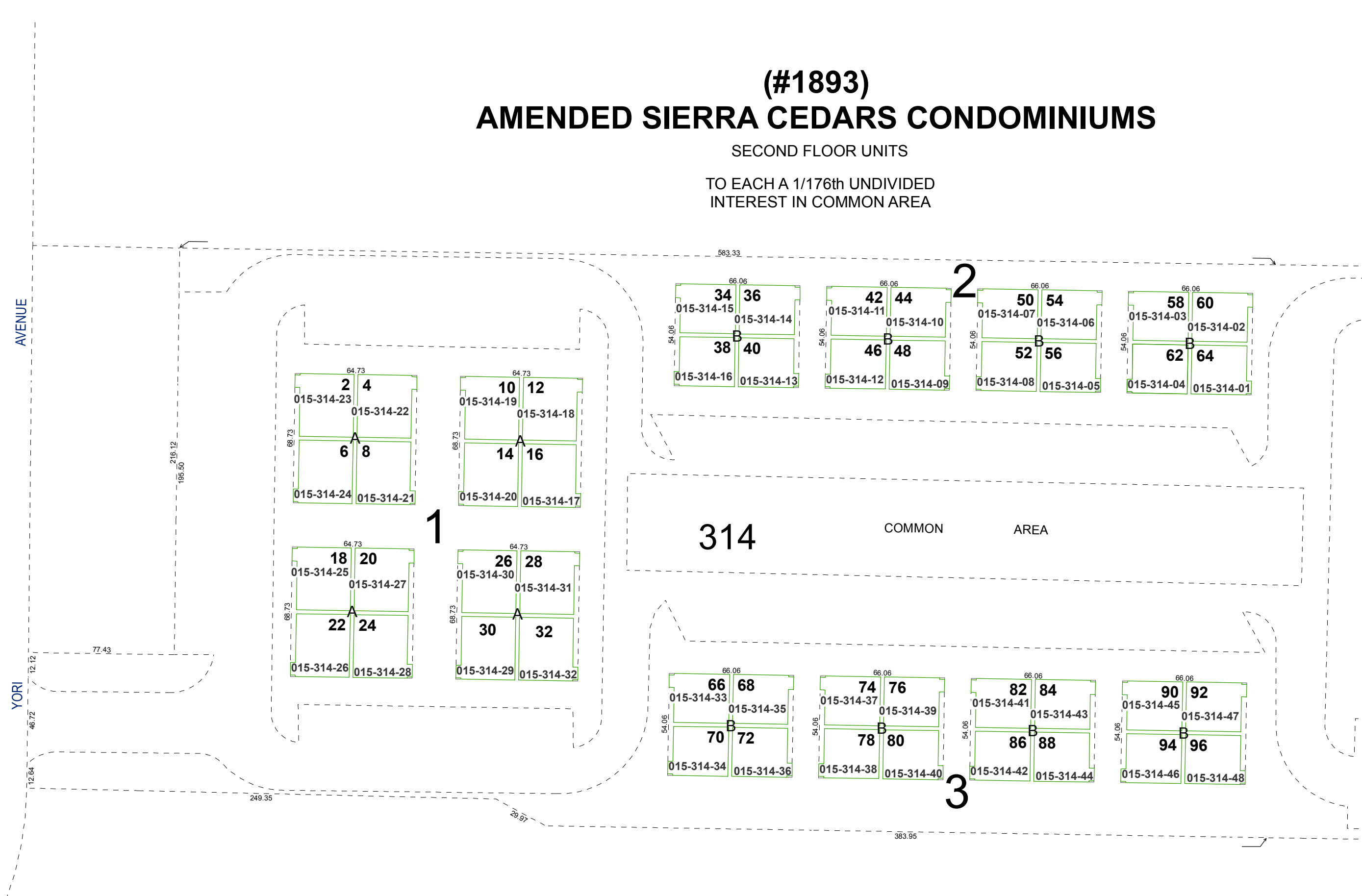
last updated: \_\_\_\_\_

area previously shown on map(s) \_\_\_\_\_

NOTE: This map was prepared for the use of the Washoe County Assessor for assessment and illustrative purposes only. It does not represent a survey of the premises. No liability is assumed as to the sufficiency or accuracy of the data delineated hereon.

AVENUE

YORI



314 COMMON AREA

1

2

3