

(#113)

# SIERRA VISTA TRACT

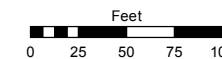
## PORTIONS OF THE SW 1/4 OF SEC. 13 & THE SE 1/4 OF SEC. 14 T19N - R19E

Assessor's Map Number

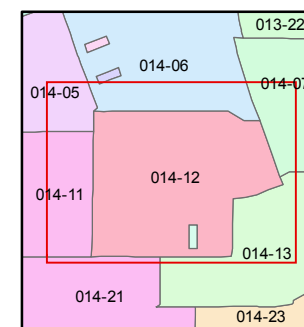
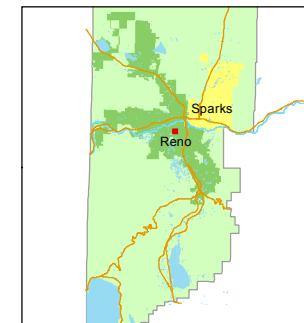
### 014-12

STATE OF NEVADA  
**WASHOE COUNTY**  
ASSESSOR'S OFFICE  
Michael E. Clark, Assessor

1001 East Ninth Street  
Building D  
Reno, Nevada 89512  
(775) 328-2231



1 inch = 100 feet

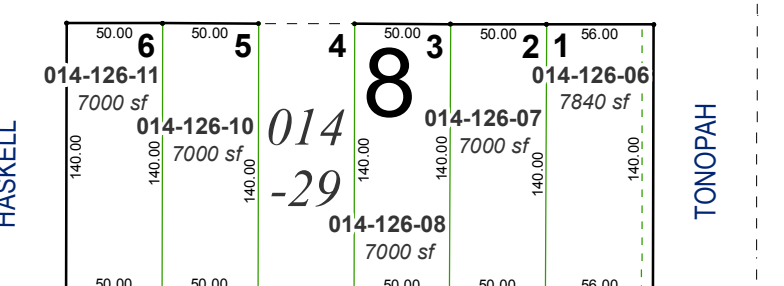
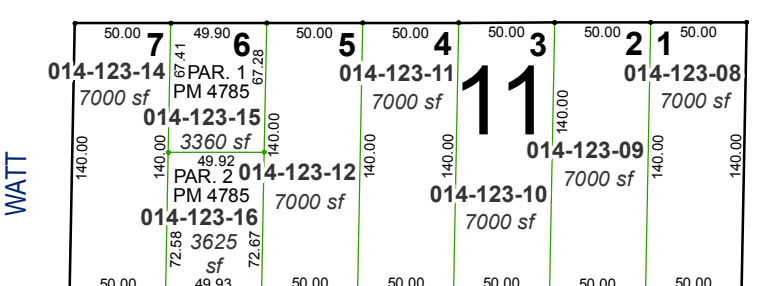
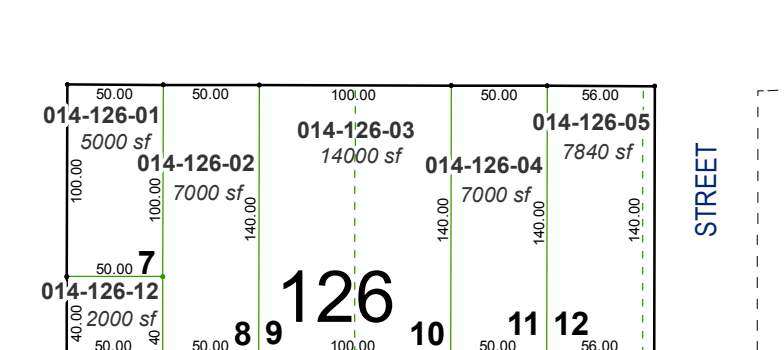
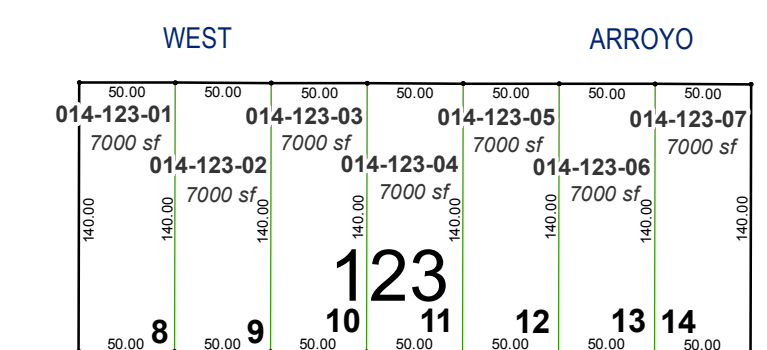
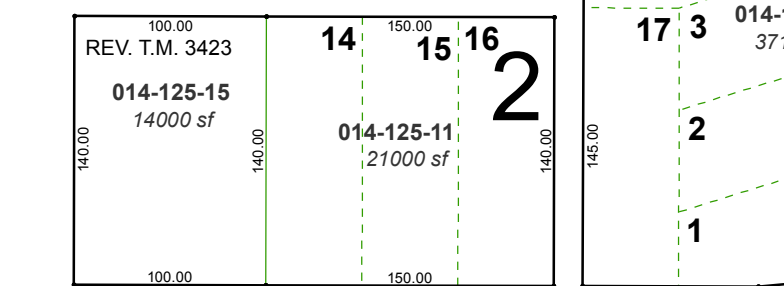
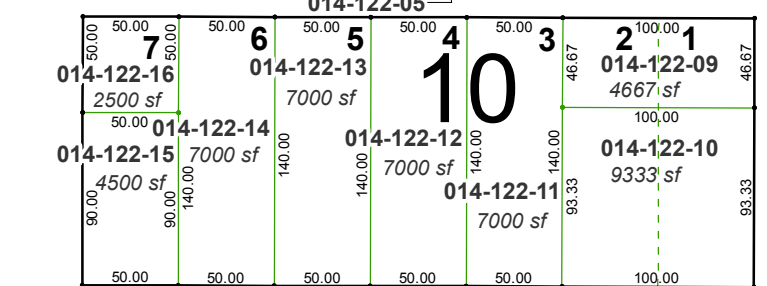
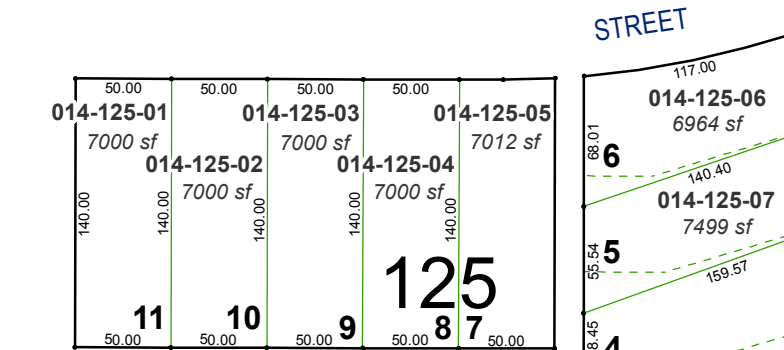
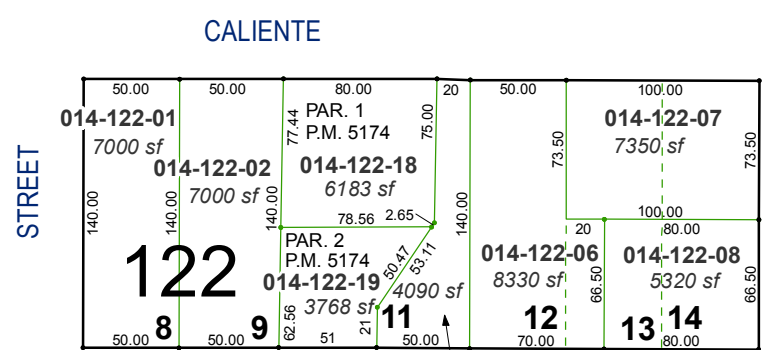
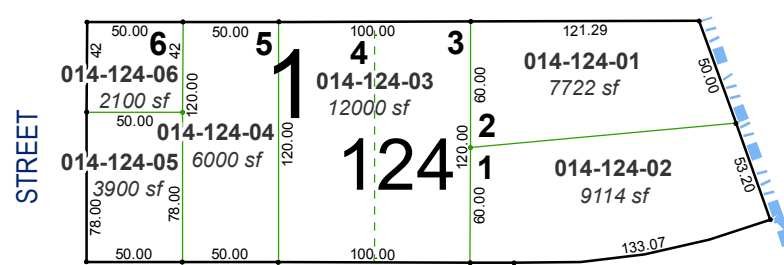
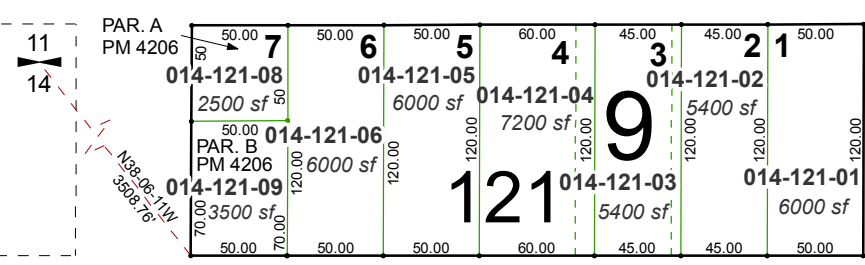


created by: TWT 11/22/2013

last updated: EMG 7/9/15

area previously shown on map(s)

NOTE: This map was prepared for the use of the Washoe County Assessor for assessment and illustrative purposes only. It does not represent a survey of the premises. No liability is assumed as to the sufficiency or accuracy of the data delineated hereon.



11  
14

PAR. A  
PM 4206  
PAR. B  
PM 4206  
NSR-06-T19  
3607.78

STREET

CALIENTE

WEST

ARROYO

WATT

WEST

PUEBLO

STREET

STREET

SOUTH

VASSAR

STREET

VIRGINIA

HOLCOMB

AVENUE

EAST ARROYO STREET

STREET

STREET

STREET

TONOPAH

STREET