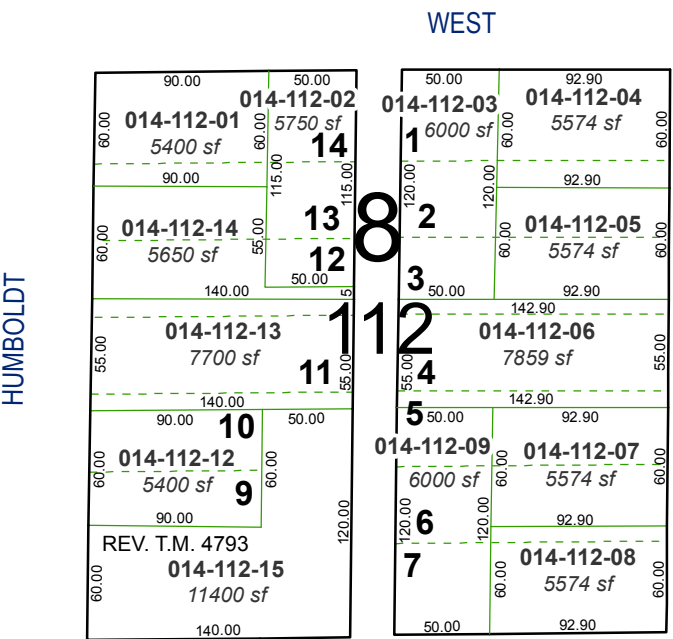
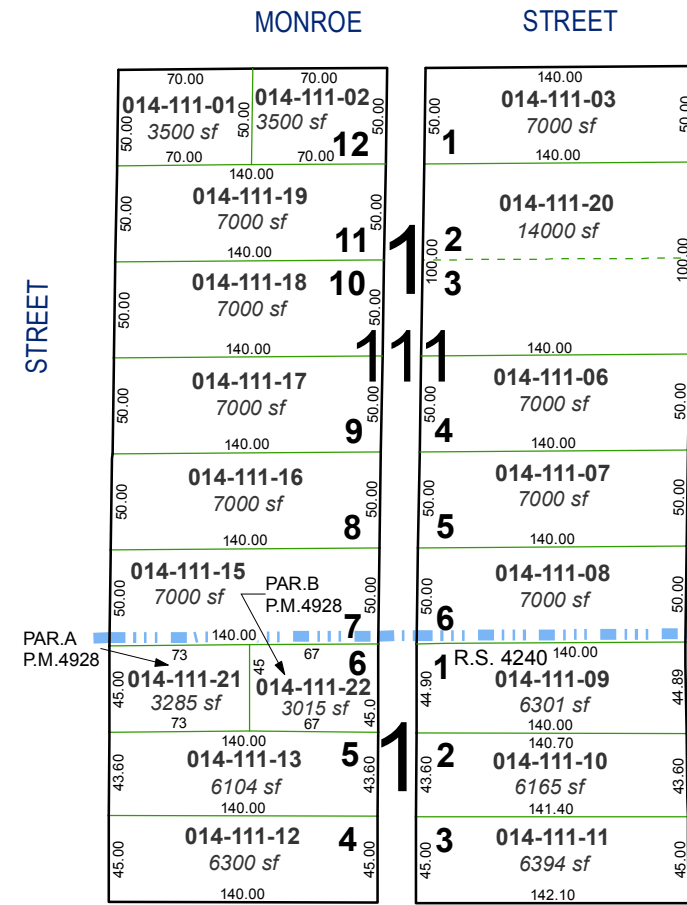
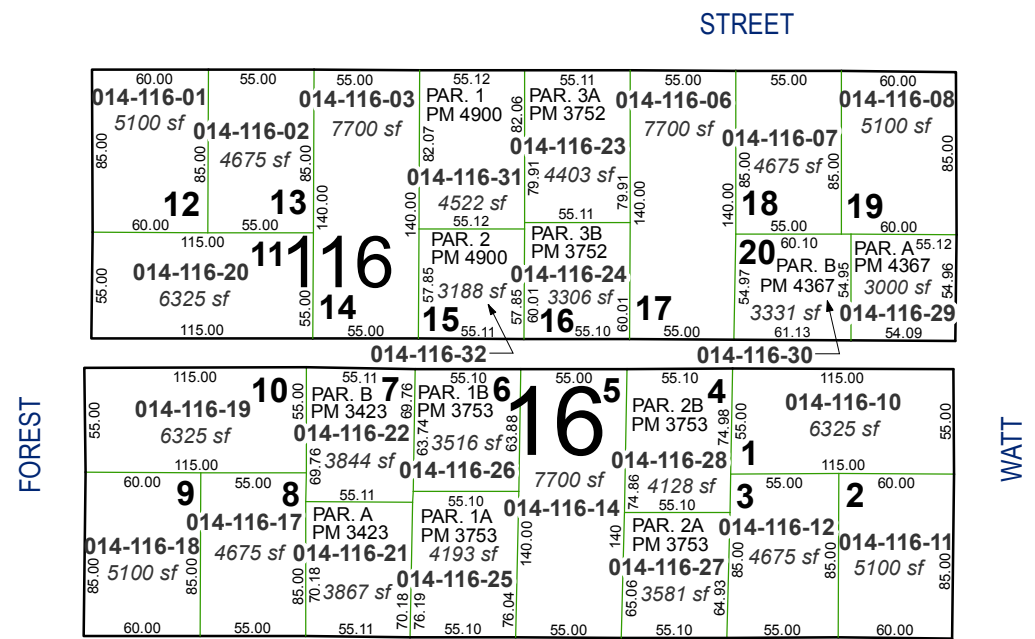
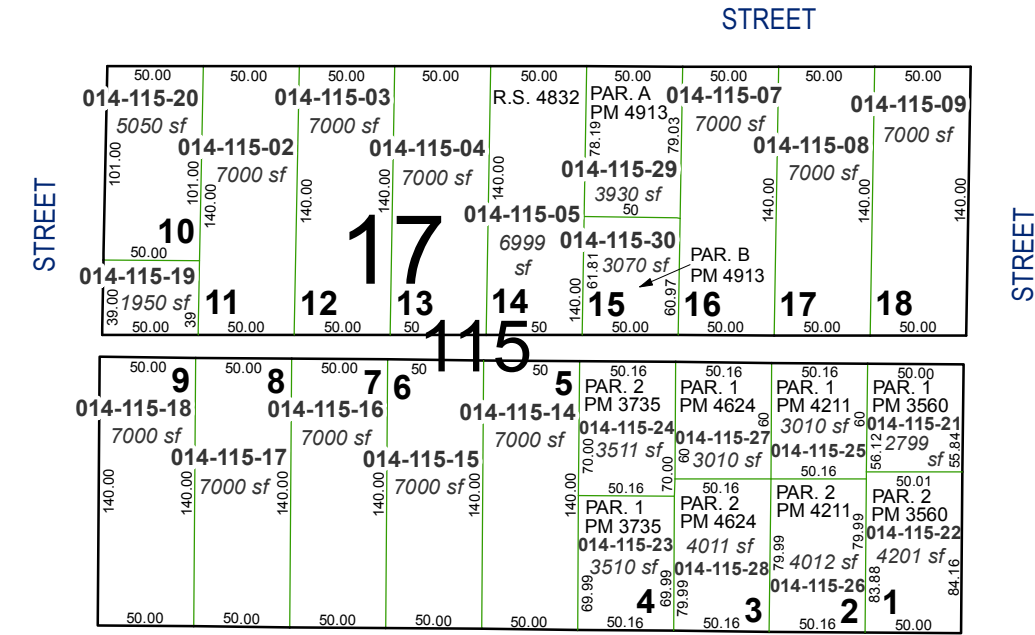
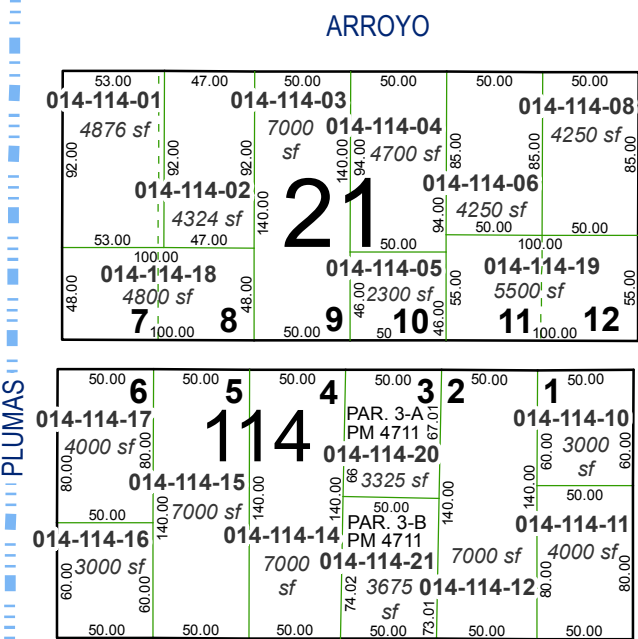
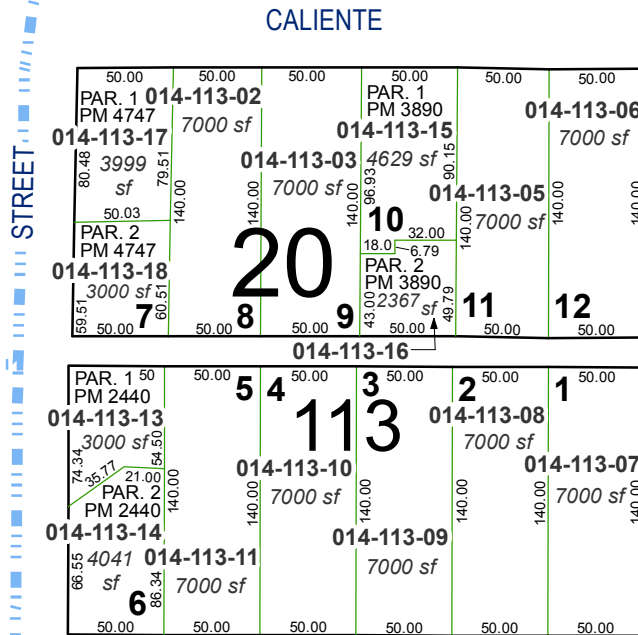


(#3) ARLINGTON HEIGHTS SUBDIVISION



(#114) O'BRIEN'S SOUTHBRAE ADDITION

(#113) SIERRA VISTA TRACT PORTION OF THE SE 1/4 OF SECTION 14 T19N - R19E

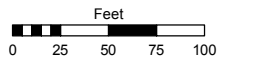


Assessor's Map Number

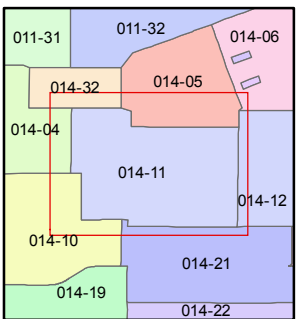
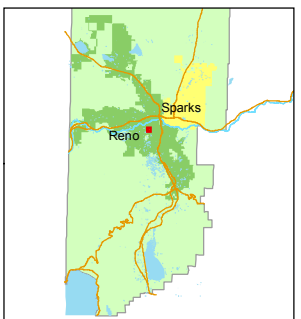
014-11

STATE OF NEVADA
WASHOE COUNTY
ASSESSOR'S OFFICE
Joshua G. Wilson, Assessor

1001 East Ninth Street
Building D
Reno, Nevada 89512
(775) 328-2231



1 inch = 100 feet



created by: TWTT 11/21/2013

last updated:

area previously shown on map(s)

NOTE: This map was prepared for the use of the Washoe County Assessor for assessment and illustrative purposes only. It does not represent a survey of the premises. No liability is assumed as to the sufficiency or accuracy of the data delineated herein.