

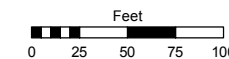
(#114)
O'BRIEN'S SOUTHBRAE ADDITION
 PORTION OF THE SOUTHEAST 1/4 OF SECTION 14
 T19N - R19E

Assessor's Map Number

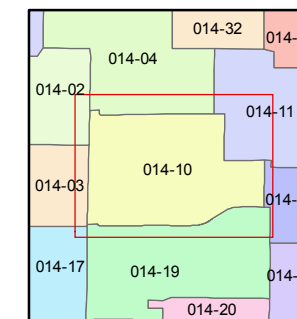
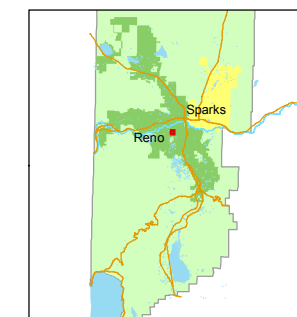
014-10

STATE OF NEVADA
WASHOE COUNTY
 ASSESSOR'S OFFICE
 Joshua G. Wilson, Assessor

1001 East Ninth Street
 Building D
 Reno, Nevada 89512
 (775) 328-2231



1 inch = 100 feet

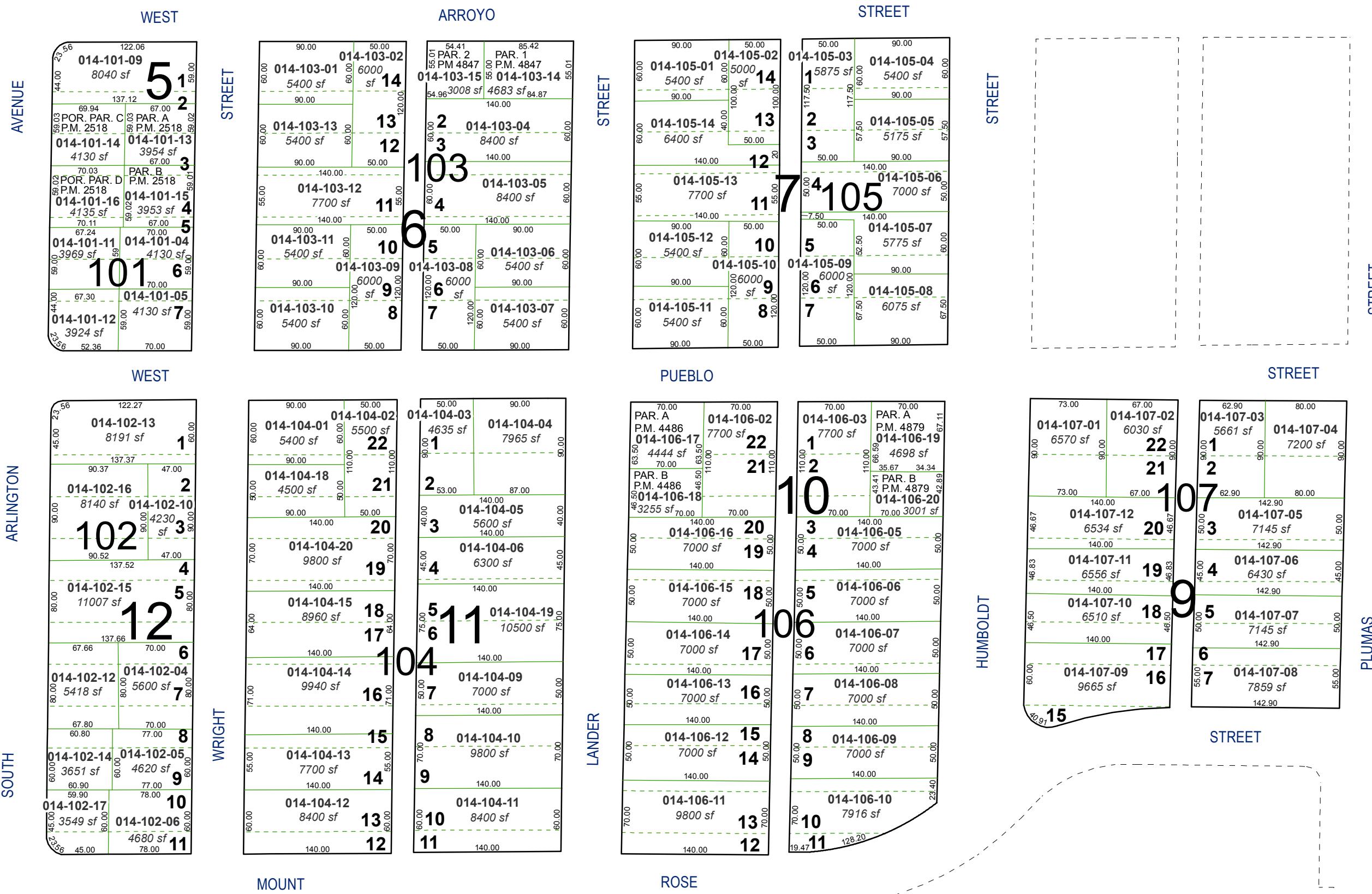


created by: TWT 11/20/2013

last updated: _____

area previously shown on map(s) _____

NOTE: This map was prepared for the use of the Washoe County Assessor for assessment and illustrative purposes only. It does not represent a survey of the premises. No liability is assumed as to the sufficiency or accuracy of the data delineated hereon.



STREET

PLUMAS

HUMBOLDT

LANDER

WRIGHT

ARLINGTON

SOUTH

AVENUE

WEST

ARROYO

STREET

PUEBLO

STREET

ROSE

MOUNT