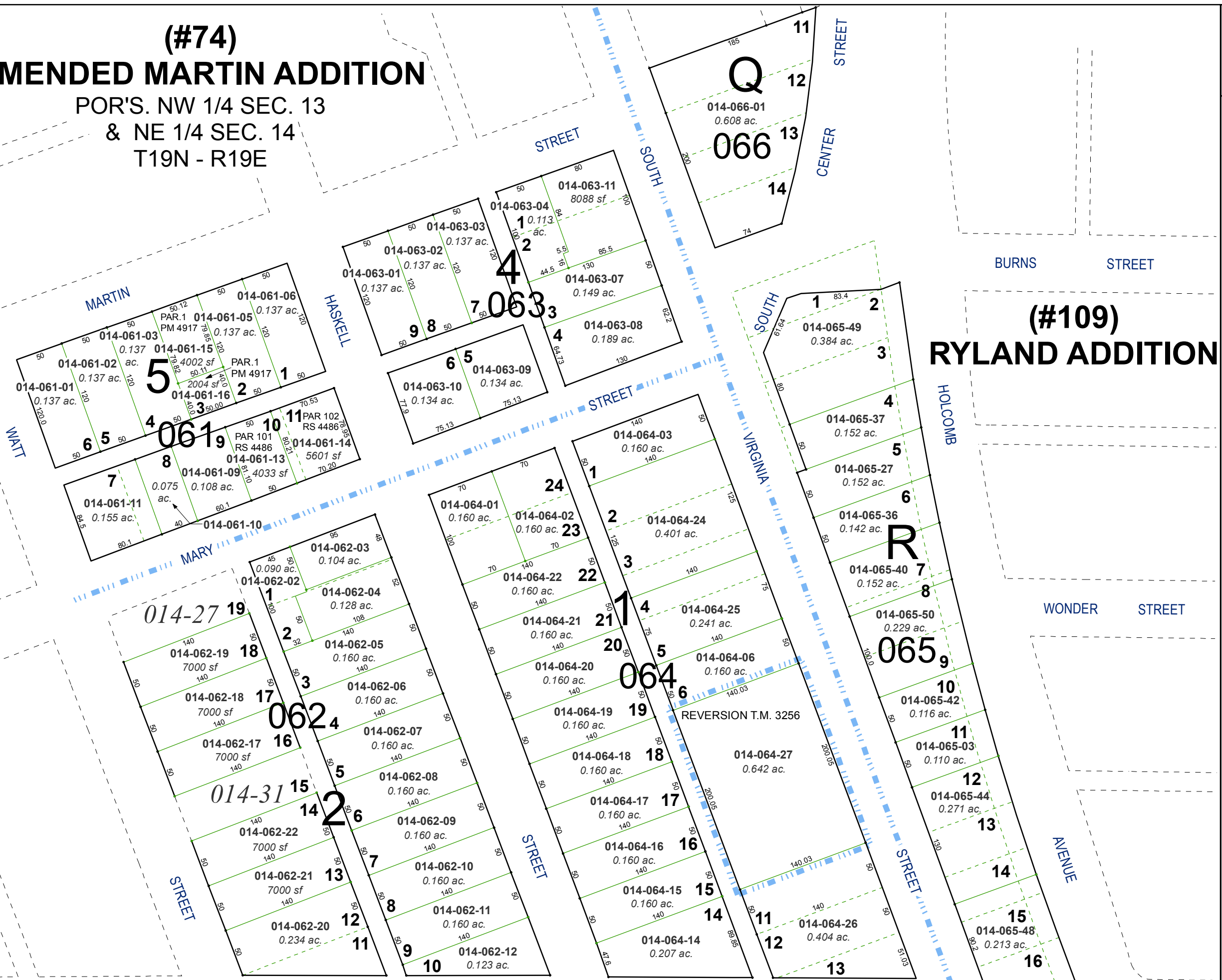


(#74)
AMENDED MARTIN ADDITION
 POR'S. NW 1/4 SEC. 13
 & NE 1/4 SEC. 14
 T19N - R19E



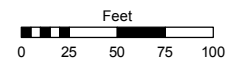
(#61) LITCH ADDITION

(#109)
RYLAND ADDITION

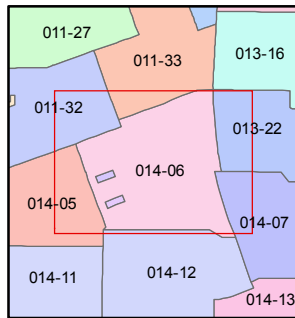
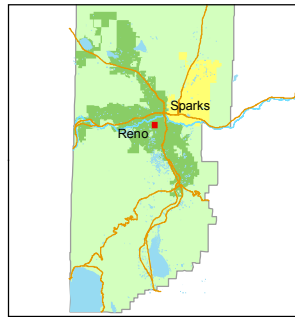
Assessor's Map Number
014-06

STATE OF NEVADA
WASHOE COUNTY
 ASSESSOR'S OFFICE
 Joshua G. Wilson, Assessor

1001 East Ninth Street
 Building D
 Reno, Nevada 89512
 (775) 328-2231



1 inch = 100 feet



created by: TWT 10/14/2013

last updated: _____

area previously shown on map(s) _____

NOTE: This map was prepared for the use of the Washoe County Assessor for assessment and illustrative purposes only. It does not represent a survey of the premises. No liability is assumed as to the sufficiency or accuracy of the data delineated hereon.