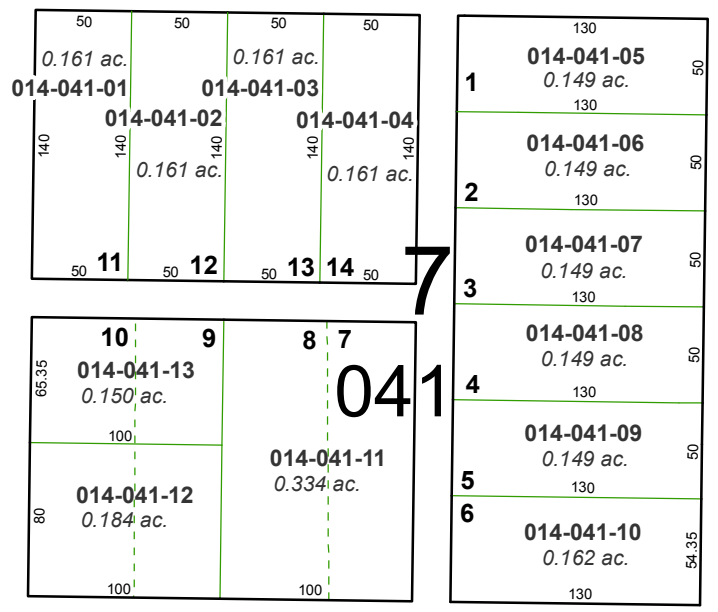
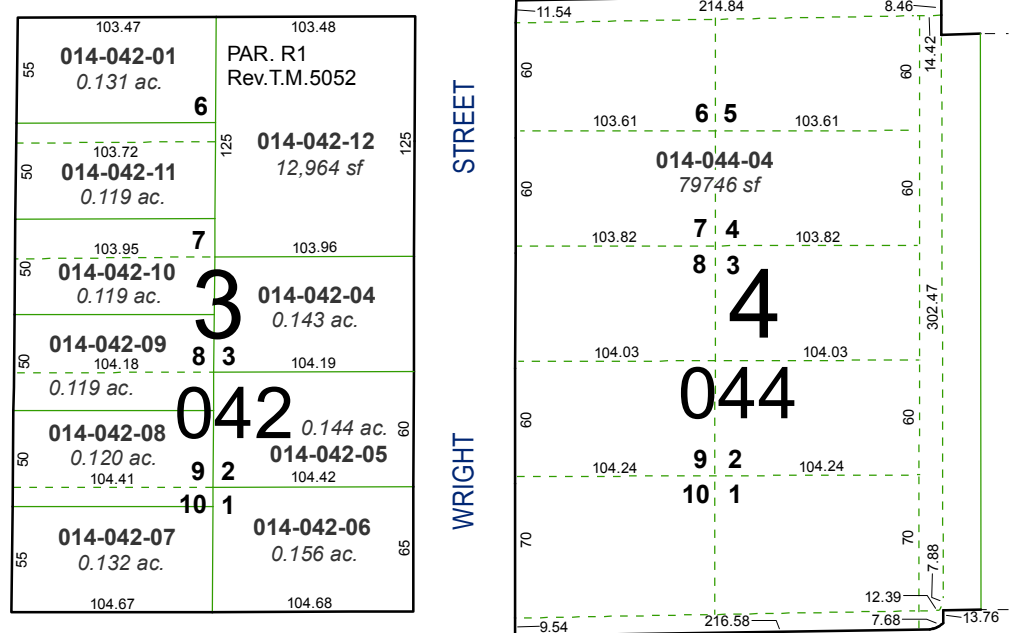


**(#82)
MARKER TRACT**

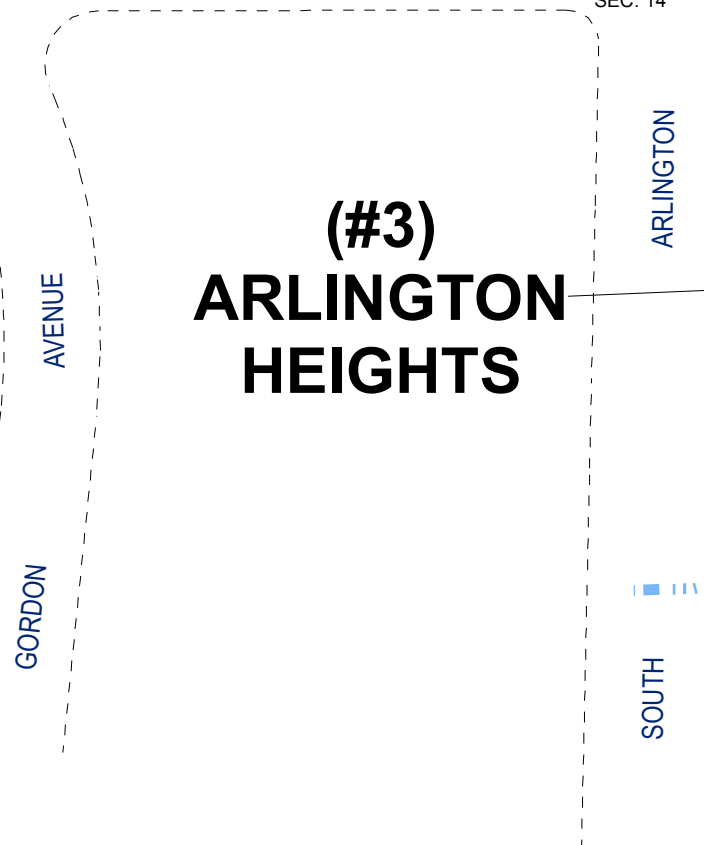


PORTION SECTION 14, T19N - R19E
**(#238)
REINMILLER SUBDIVISION**

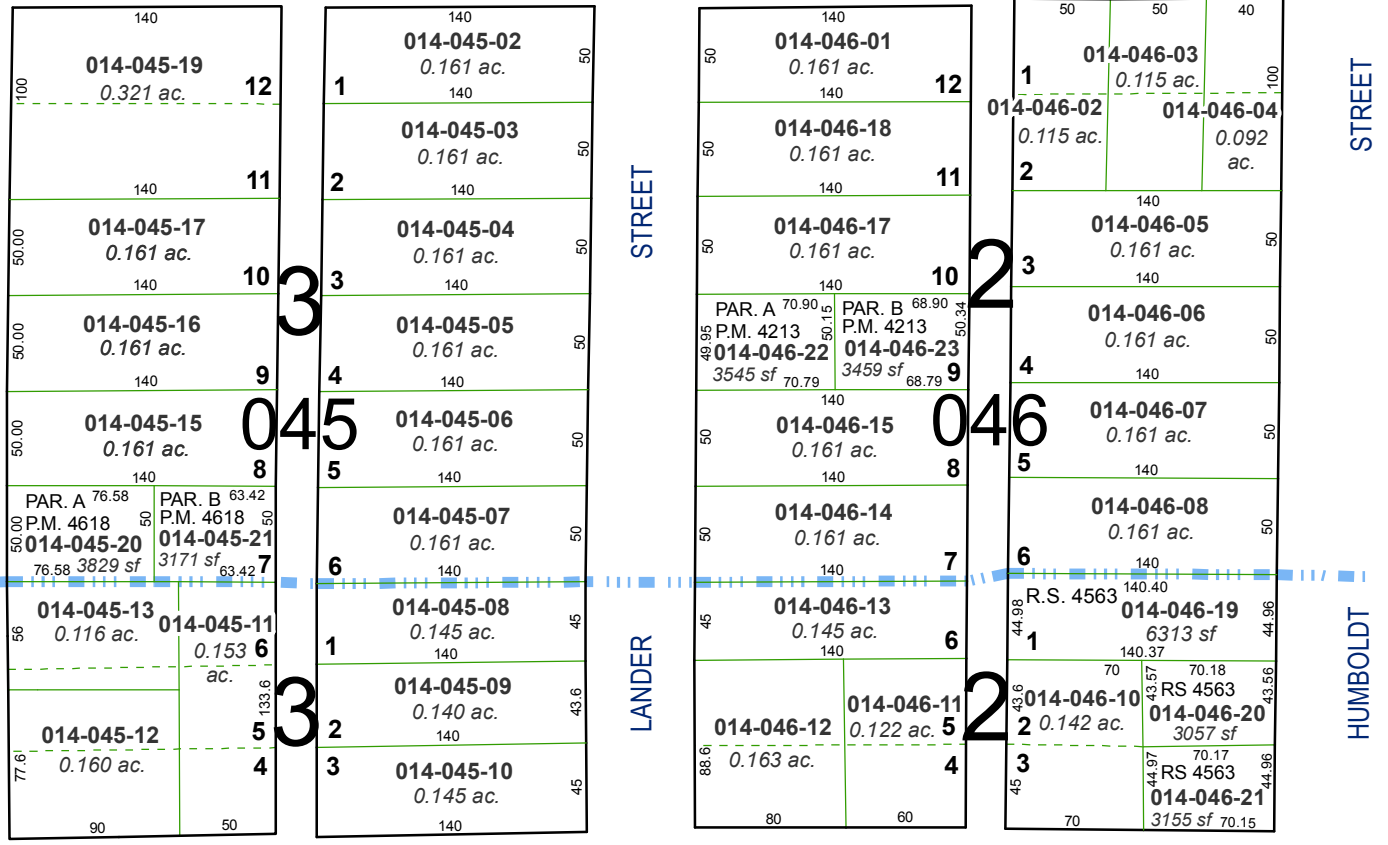


Plumas Park
014-32

**(#3)
ARLINGTON
HEIGHTS**



**(#114)
OBRIEN'S SOUTHBRAE ADDITION**



Assessor's Map Number
014-04

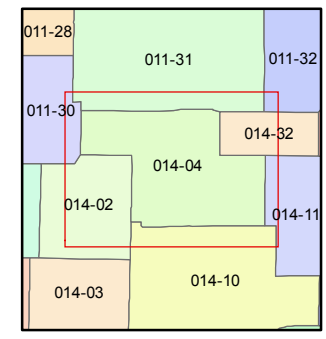
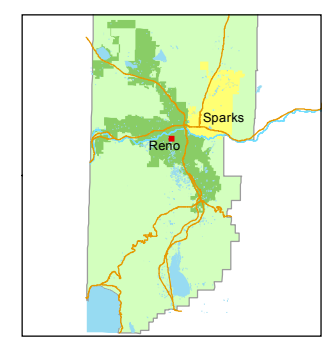
STATE OF NEVADA
**WASHOE COUNTY
ASSESSOR'S OFFICE**
Joshua G. Wilson, Assessor

1001 East Ninth Street
Building D
Reno, Nevada 89512
(775) 328-2231



Feet
0 25 50 75 100

1 inch = 100 feet



created by: TWT 10/19/2011
last updated: CFB 06/18/2013 CFB 01/28/2014

area previously shown on map(s)

NOTE: This map was prepared for the use of the Washoe County Assessor for assessment and illustrative purposes only. It does not represent a survey of the premises. No liability is assumed as to the sufficiency or accuracy of the data delineated hereon.