

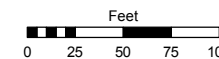
(#283)
REARRANGEMENT OF LOT 1, BLOCK A
ARLINGTON HEIGHTS SUBURBAN HOME TRACT
 PORTION OF THE SW 1/4 OF SECTION 14
 T19N - R19E

Assessor's Map Number

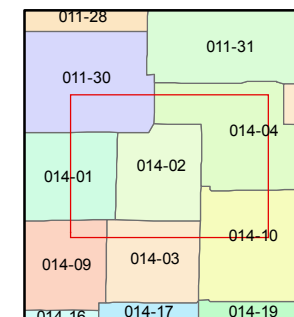
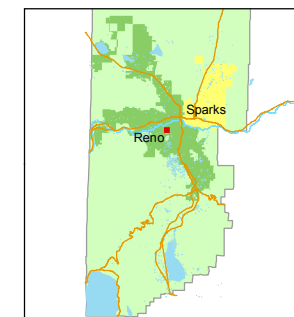
014-02

STATE OF NEVADA
WASHOE COUNTY
ASSESSOR'S OFFICE
 Joshua G. Wilson, Assessor

1001 East Ninth Street
 Building D
 Reno, Nevada 89512
 (775) 328-2231



1 inch = 100 feet

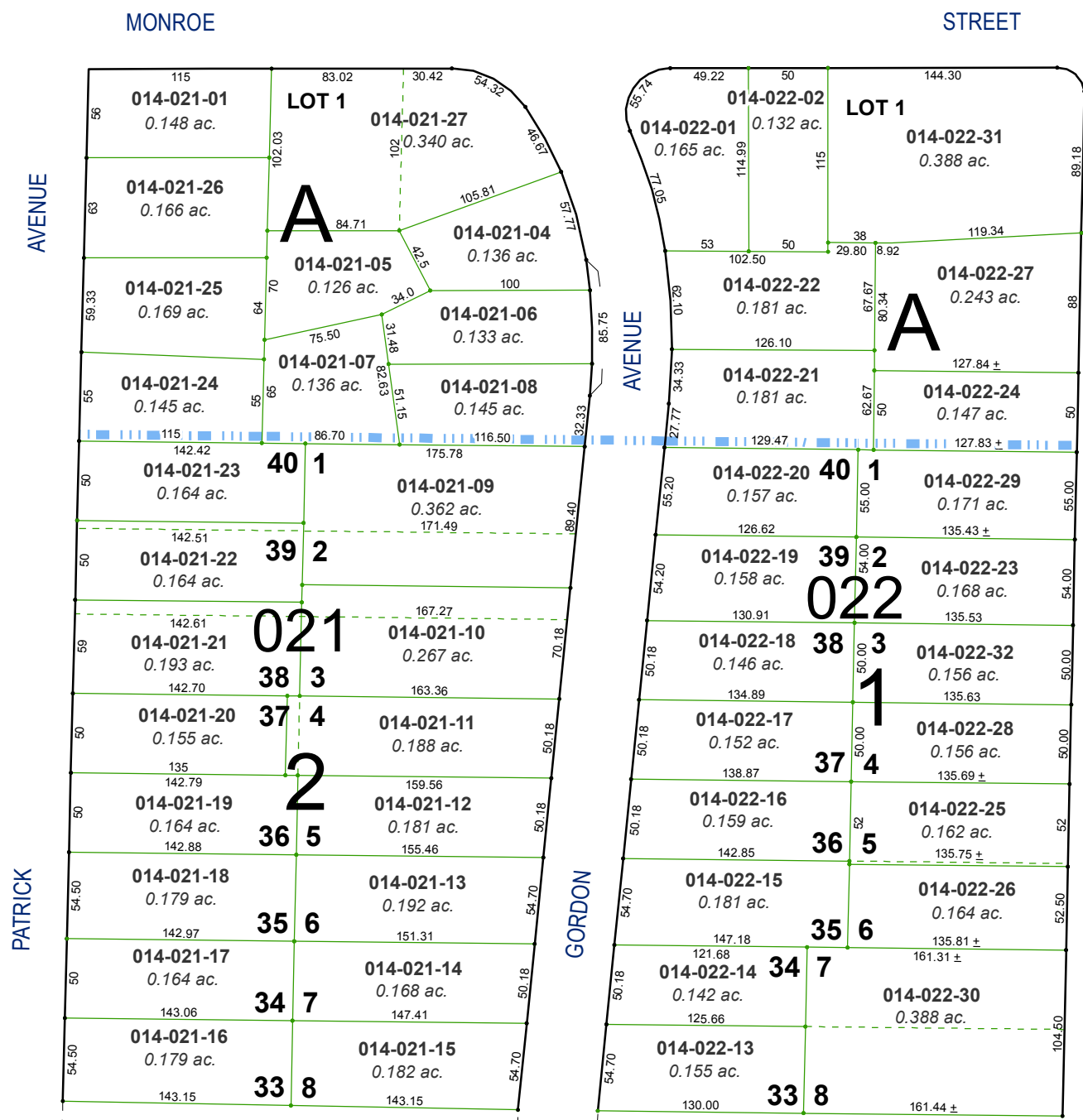


created by: TWT 10/3/2013

last updated: _____

area previously shown on map(s) _____

NOTE: This map was prepared for the use of the Washoe County Assessor for assessment and illustrative purposes only. It does not represent a survey of the premises. No liability is assumed as to the sufficiency or accuracy of the data delineated hereon.



(#235)
REARRANGEMENT OF
LOTS 2 THRU 6, BLOCK A
ARLINGTON HEIGHTS
SUBURBAN HOME TRACT