

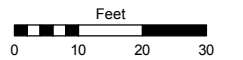
PARCEL MAP 4709
 PORTIONS OF LOTS 11 & 12, BLOCK 10
 OF SOUTHERN ADDITION (#115)
 PORTION OF THE NW 1/4 OF SECTION 13
 T19N - R19E

Assessor's Map Number

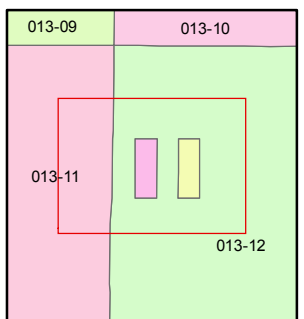
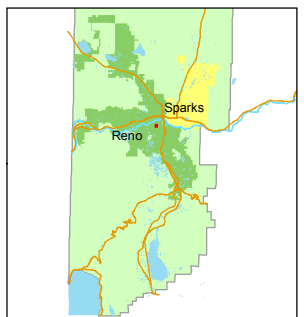
013-50

STATE OF NEVADA
WASHOE COUNTY
ASSESSOR'S OFFICE
 Joshua G. Wilson, Assessor

1001 East Ninth Street
 Building D
 Reno, Nevada 89512
 (775) 328-2231



1 inch = 30 feet



created by: TWT 9/20/2013

last updated: _____

area previously shown on map(s)

013-12

NOTE: This map was prepared for the use of the Washoe County Assessor for assessment and illustrative purposes only. It does not represent a survey of the premises. No liability is assumed as to the sufficiency or accuracy of the data delineated hereon.

WILSON AVENUE

WILSON AVENUE

ALLEY

LOCUST STREET

LOCUST STREET

CHENEY STREET

CHENEY STREET

