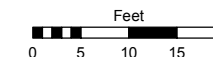


Assessor's Map Number

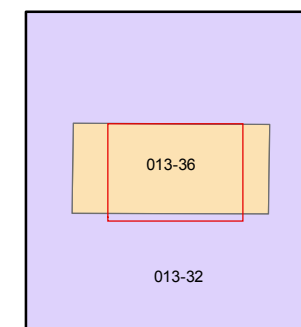
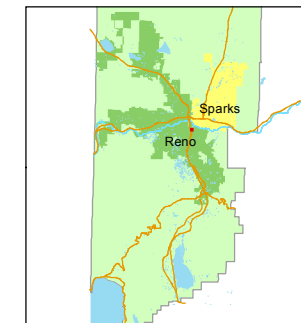
013-36-S3

STATE OF NEVADA
WASHOE COUNTY
ASSESSOR'S OFFICE
Joshua G. Wilson, Assessor

1001 East Ninth Street
Building D
Reno, Nevada 89512
(775) 328-2231



1 inch = 20 feet



created by: TWT 8/23/2014

last updated: _____

area previously shown on map(s)

013-32

NOTE: This map was prepared for the use of the Washoe County Assessor for assessment and illustrative purposes only. It does not represent a survey of the premises. No liability is assumed as to the sufficiency or accuracy of the data delineated hereon.

(#2075)
CENTURY PARK UNIT 1
AN OFFICE CONDOMINIUM
3 RD FLOOR

