

(#515) ACADEMY MANOR SUBDIVISION

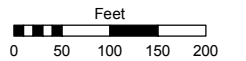
PORTION OF THE SOUTH 1/2 OF SECTION 18
T19N - R20E

Assessor's Map Number

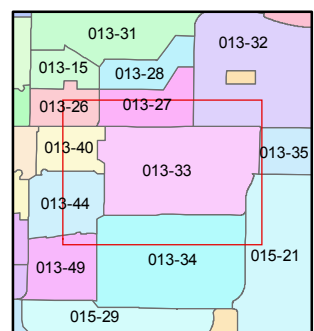
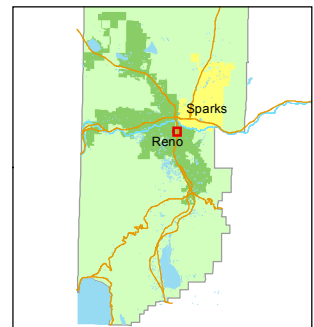
013-33

STATE OF NEVADA
WASHOE COUNTY
ASSESSOR'S OFFICE
Joshua G. Wilson, Assessor

1001 East Ninth Street
Building D
Reno, Nevada 89512
(775) 328-2231



1 inch = 200 feet

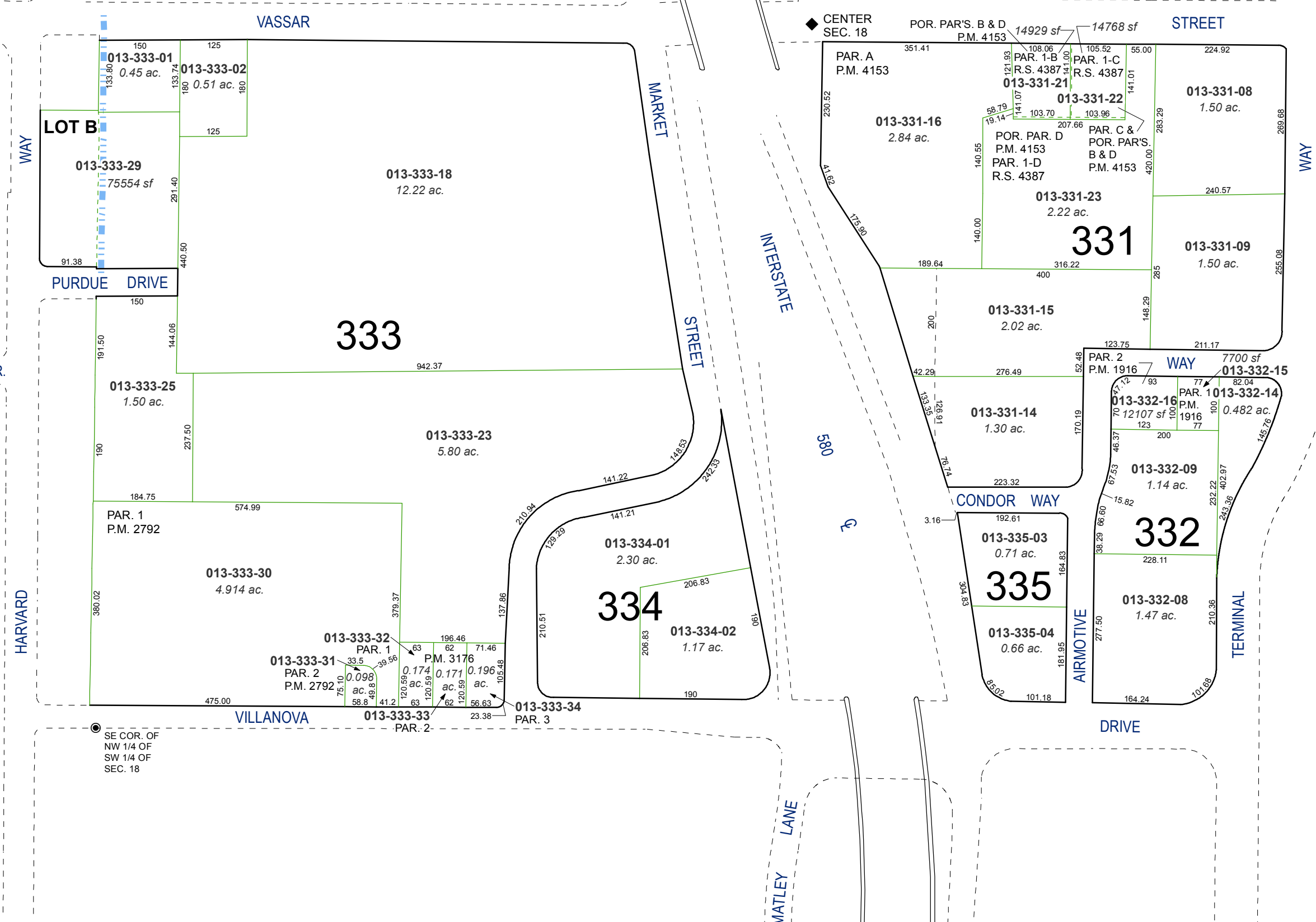


created by: TWT 8/19/2014

last updated: _____

area previously shown on map(s) _____

NOTE: This map was prepared for the use of the Washoe County Assessor for assessment and illustrative purposes only. It does not represent a survey of the premises. No liability is assumed as to the sufficiency or accuracy of the data delineated hereon.



SE COR. OF
NW 1/4 OF
SW 1/4 OF
SEC. 18