

PORTION OF THE NW 1/4 OF SECTION 13  
T19N - R19E

(#71)  
**MEADOW VIEW ADDITION**

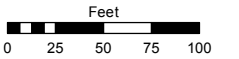
(#7)  
**BURKE'S ADDITION**

Assessor's Map Number

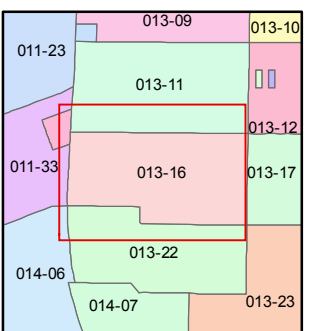
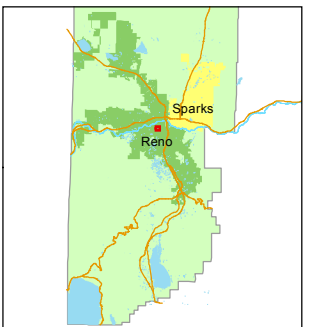
**013-16**

STATE OF NEVADA  
**WASHOE COUNTY**  
ASSESSOR'S OFFICE  
Michael E. Clark, Assessor

1001 East Ninth Street  
Building D  
Reno, Nevada 89512  
(775) 328-2231



1 inch = 100 feet



created by: KSB 10/17/2011

last updated: EMG 4/29/15

area previously shown on map(s)

NOTE: This map was prepared for the use of the Washoe County Assessor for assessment and illustrative purposes only. It does not represent a survey of the premises. No liability is assumed as to the sufficiency or accuracy of the data delineated hereon.

AVENUE

HOLCOMB

EAST

TAYLOR

STREET

AVENUE

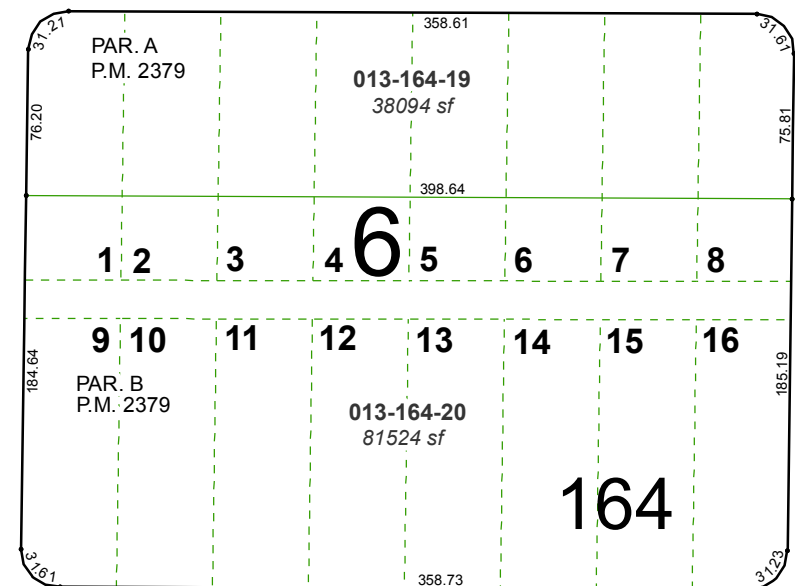
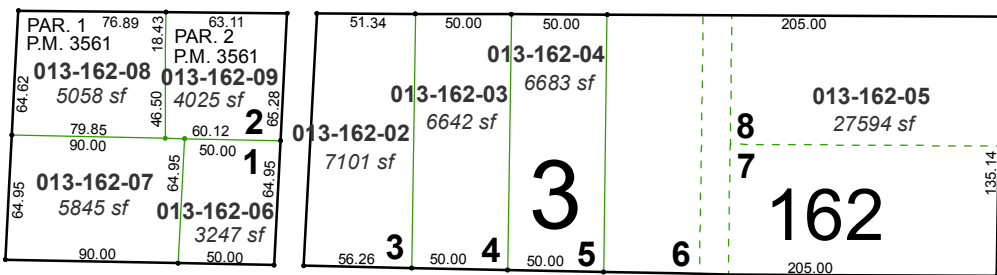
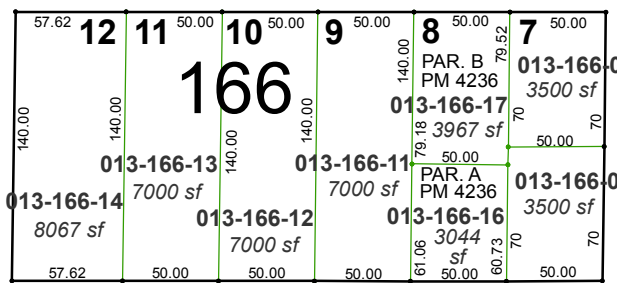
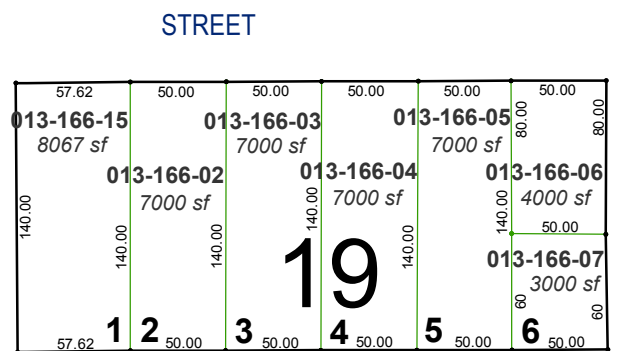
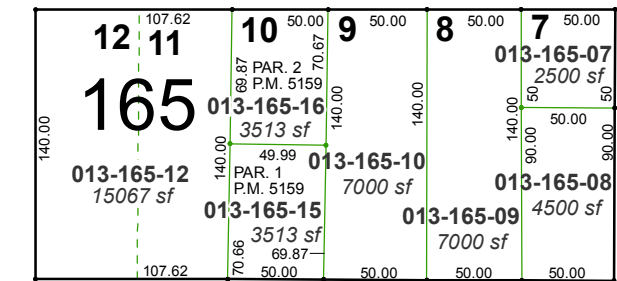
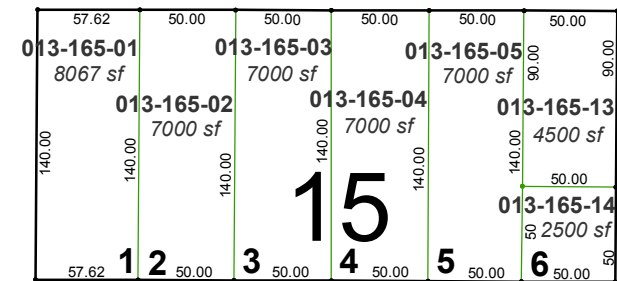
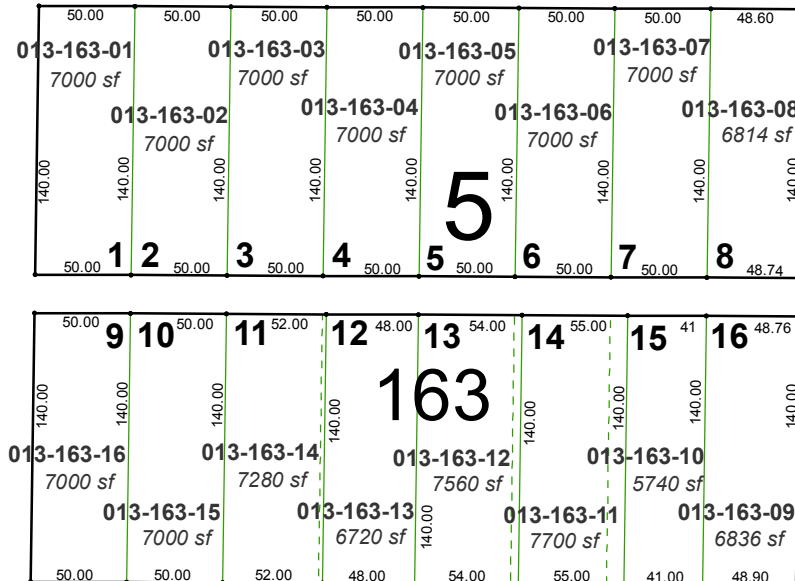
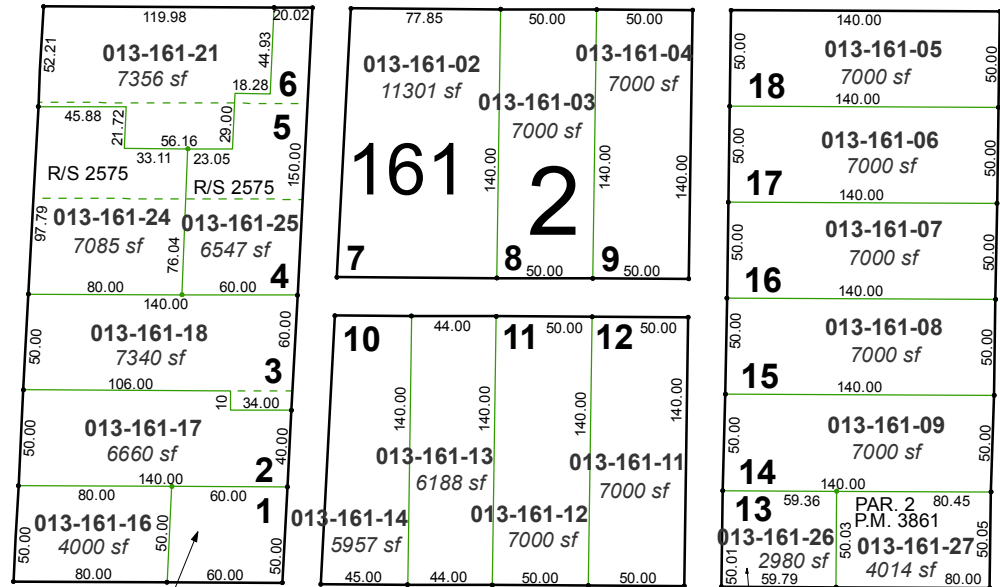
WELLS

SOUTH

AVENUE

WILSON

STREET



MALONE

LANE

WHEELER

BURNS