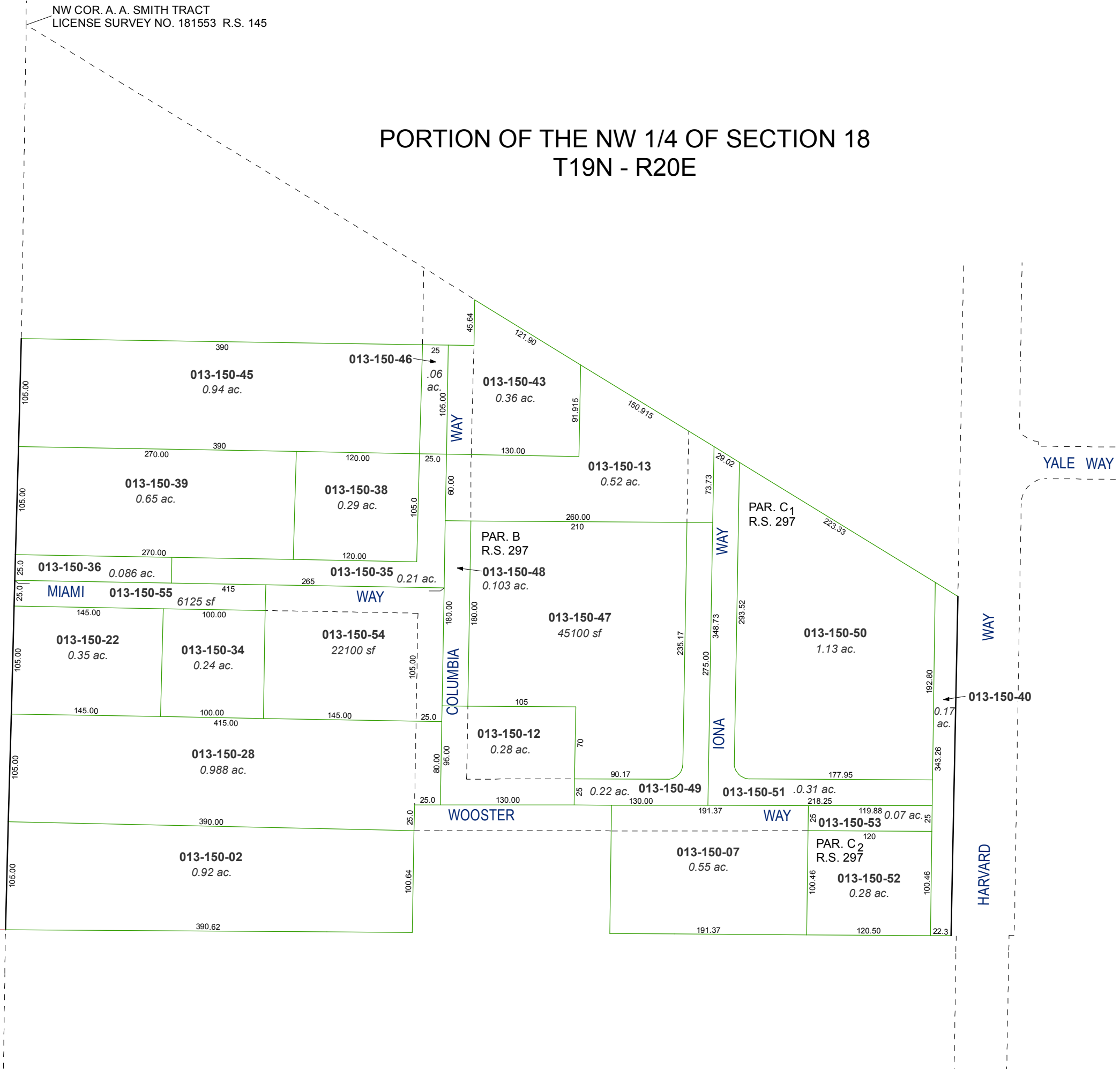


NW COR. A. A. SMITH TRACT  
LICENSE SURVEY NO. 181553 R.S. 145

# PORTION OF THE NW 1/4 OF SECTION 18 T19N - R20E

LANE

KIETZKE



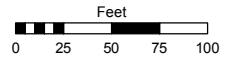
W 1/4 COR. SEC. 18

Assessor's Map Number

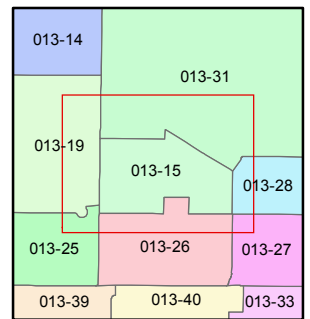
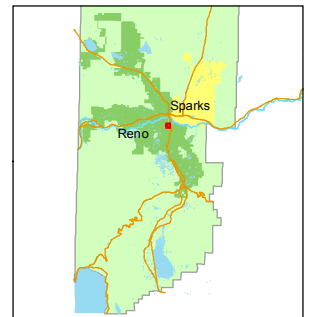
## 013-15

STATE OF NEVADA  
**WASHOE COUNTY**  
ASSESSOR'S OFFICE  
Joshua G. Wilson, Assessor

1001 East Ninth Street  
Building D  
Reno, Nevada 89512  
(775) 328-2231



1 inch = 100 feet



created by: TWT 7/30/2013

last updated: \_\_\_\_\_

area previously shown on map(s)

NOTE: This map was prepared for the use of the Washoe County Assessor for assessment and illustrative purposes only. It does not represent a survey of the premises. No liability is assumed as to the sufficiency or accuracy of the data delineated hereon.