

012-47

(#4722)
VILLAGE ON THE RIVER
PHASE 1

PORTION OF W 1/2 OF SEC. 12
T19N - R19E

**There are no active parcels
on this page.**

See Bk 012, Pg 44

04/14/2009

EAGLES EYE DRIVE
(PRIVATE)

WILD WAVES
(PRIVATE)

MILL STREET

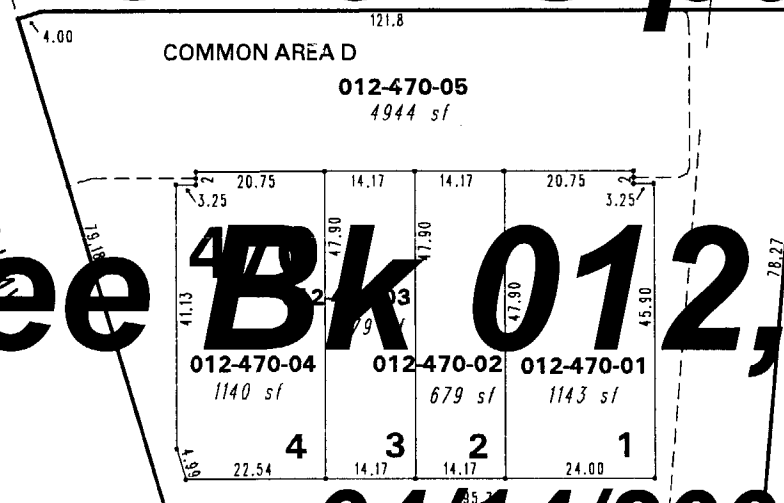
HOLCOMB AVE

012-13

012-44

012-44

012-11



1" = 30'



NOTE: This map is prepared for the use of the Washoe County Assessor for assessment and illustrative purposes only. It does not represent a survey of the premises. No liability is assumed as to the sufficiency or the accuracy of the data delineated hereon.

Office of Washoe County Assessor, Nevada - Robert W. McGowan

This area previously shown on 012-11

NOTE: Areas of parcels which are less than 2 acres are shown in square feet.

Drawn by	JL 12/08/06
Revised	