

012-28

012-42

PORTION OF THE S 1/2 SECTION 17 T19N - R20E

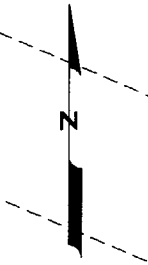
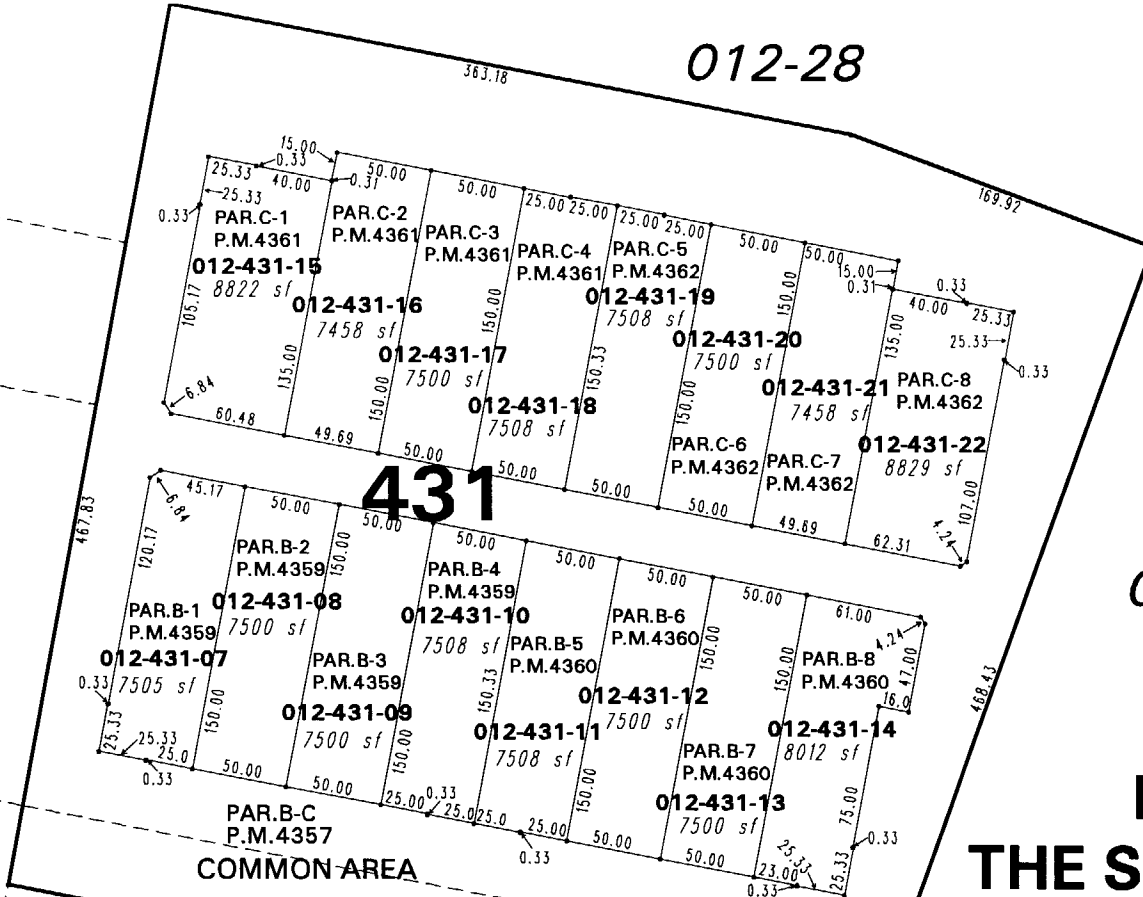
BOULEVARD

JOULE

SOUTH ROCK

STREET

012-31



1" = 100'



NOTE: This map is prepared for the use of the Washoe County Assessor for assessment and illustrative purposes only. It does not represent a survey of the premises. No liability is assumed as to the sufficiency or the accuracy of the data delineated hereon.

Office of Washoe County Assessor, Nevada - Robert W. McGowan

This area previously shown on 012-28

NOTE: Areas of parcels which are less than 2 acres are shown in square feet.

Drawn by CFB 4/27/2005
 Revised CFB 4/27/2005 *CFB 4/28/2005*
 CFB 4/29/2005**