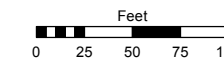


Assessor's Map Number

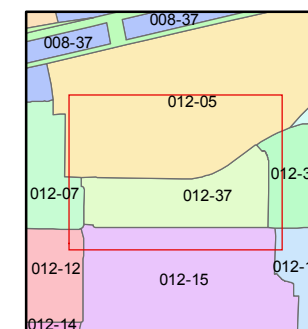
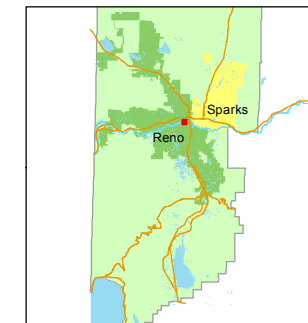
**012-37**

STATE OF NEVADA  
**WASHOE COUNTY**  
**ASSESSOR'S OFFICE**  
Joshua G. Wilson, Assessor

1001 East Ninth Street  
Building D  
Reno, Nevada 89512  
(775) 328-2231



1 inch = 100 feet



created by: CFB 09/16/2013

last updated: \_\_\_\_\_

area previously shown on map(s)  
\_\_\_\_\_

NOTE: This map was prepared for the use of the Washoe County Assessor for assessment and illustrative purposes only. It does not represent a survey of the premises. No liability is assumed as to the sufficiency or accuracy of the data delineated hereon.

PORTION OF THE NE 1/4 OF SECTION 12  
T19N - R19E

**371**

Truckee River

Truckee

AVENUE

STREET

STREET

KUENZLI

KIRMAN

MANUEL

EAST

SECOND

STREET

**012-371-19**  
55375 sf

**012-371-08**  
14075 sf

R.S. 5512

**012-371-22**  
54439 sf

R.S. 4500  
PAR. A  
R.S. 4895

**012-371-21**  
6.00 ac.

