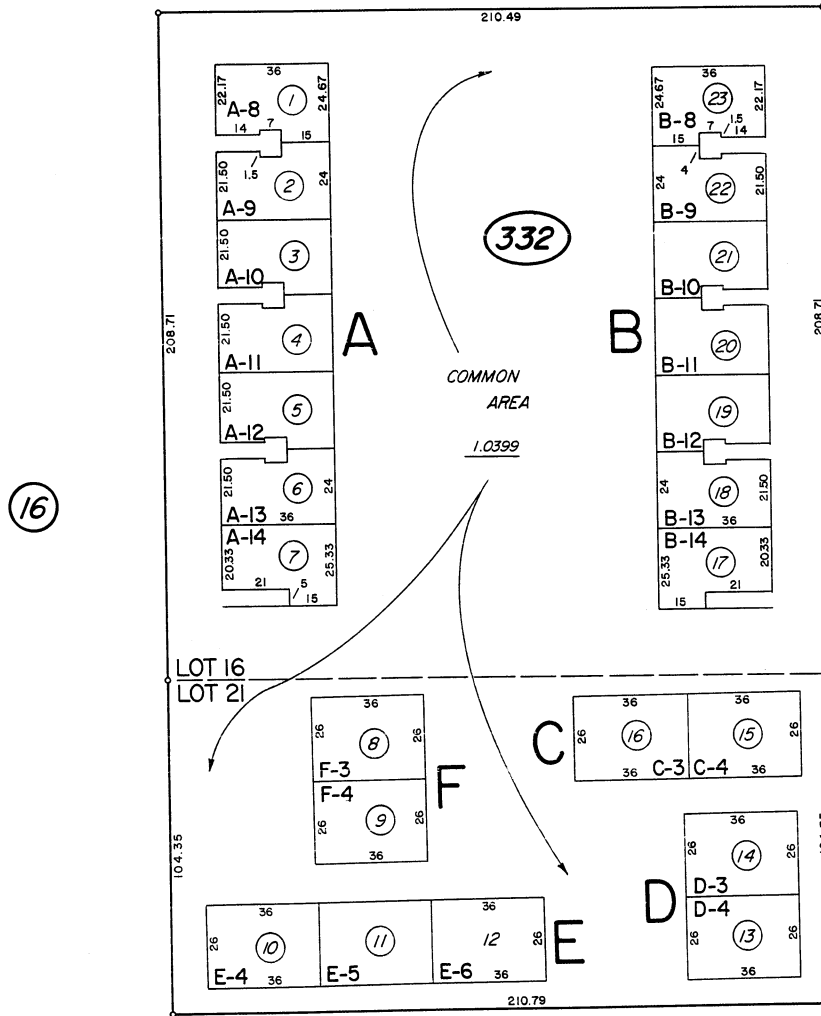


LEWIS STREET



16

LEWIS MANOR CONDOMINIUM

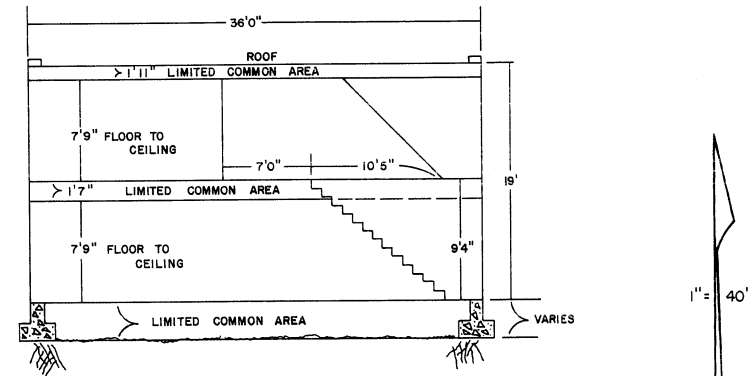
POR. NE⁴ SE⁴ SEC. 12

T. 19 N. - R. 19 E.

2 ND. FLOOR

TO EACH AN UNDIVIDED 1/45 TH INTEREST IN COMMON AREA

16



TYPICAL UNIT

NOTE: This Map is prepared for the use of the Washoe County Assessor for Assessment and illustrative purposes only, it does not represent survey of the premises. No liability is assumed as to the sufficiency or accuracy of the data delineated hereon.

16

Assessor's Map County of Washoe, Nevada

NOTE - ASSESSOR'S BLOCK NUMBERS SHOWN IN ELLIPSES
ASSESSOR'S PARCEL NUMBERS SHOWN IN CIRCLES

drawn by	GS.	2/84
revised		
superseded		