

# (#33) HATCH'S SOUTHEASTERN ADDITION

# (#1) AITKEN ADDITION

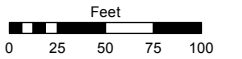
PORTION OF THE NE 1/4 OF  
THE SW 1/4 OF SECTION 12  
T19N - R19E

Assessor's Map Number

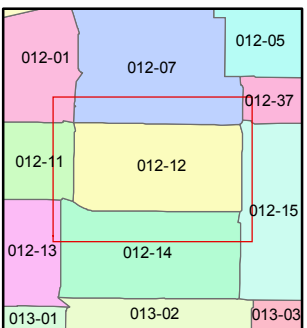
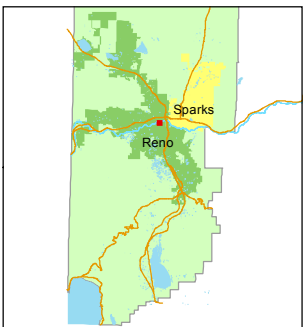
**012-12**

STATE OF NEVADA  
**WASHOE COUNTY**  
ASSESSOR'S OFFICE  
Joshua G. Wilson, Assessor

1001 East Ninth Street  
Building D  
Reno, Nevada 89512  
(775) 328-2231



1 inch = 100 feet

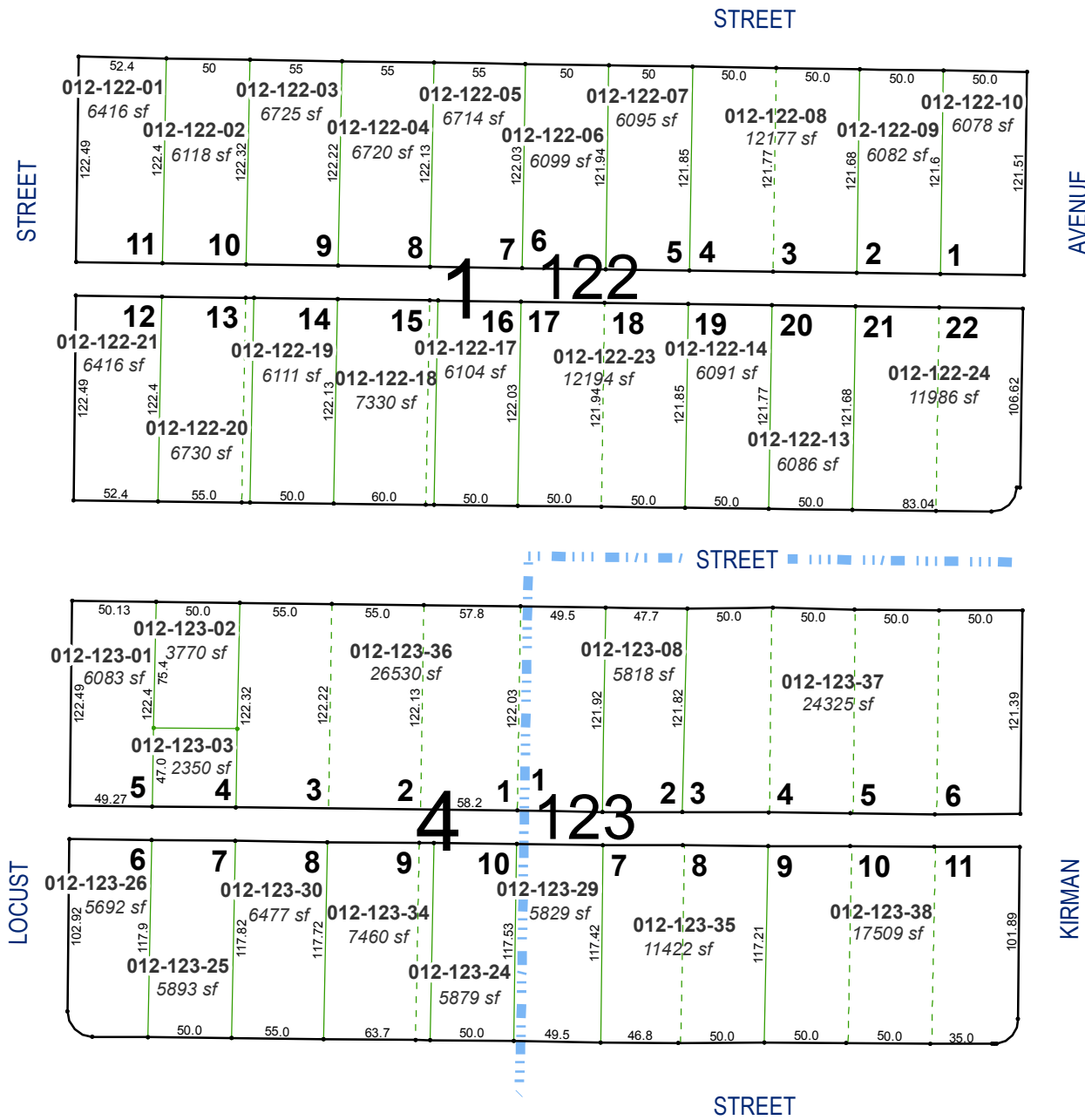
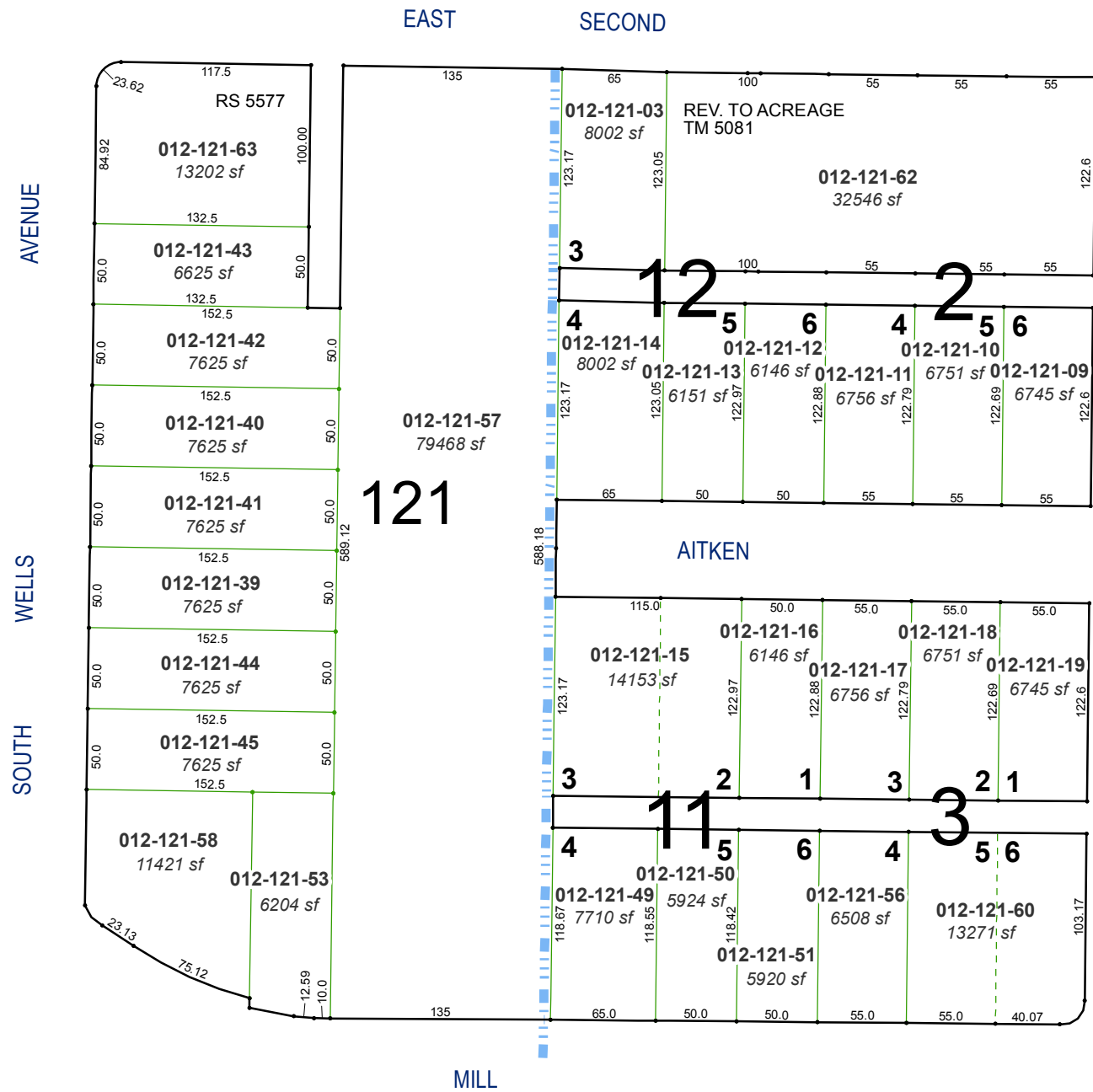


created by: TWT 4/17/2013

last updated: KSB 6/23/14v.2 KSB 6/30/14

area previously shown on map(s)

NOTE: This map was prepared for the use of the Washoe County Assessor for assessment and illustrative purposes only. It does not represent a survey of the premises. No liability is assumed as to the sufficiency or accuracy of the data delineated hereon.



# (#201) L.A.J. ROSE SUBDIVISION