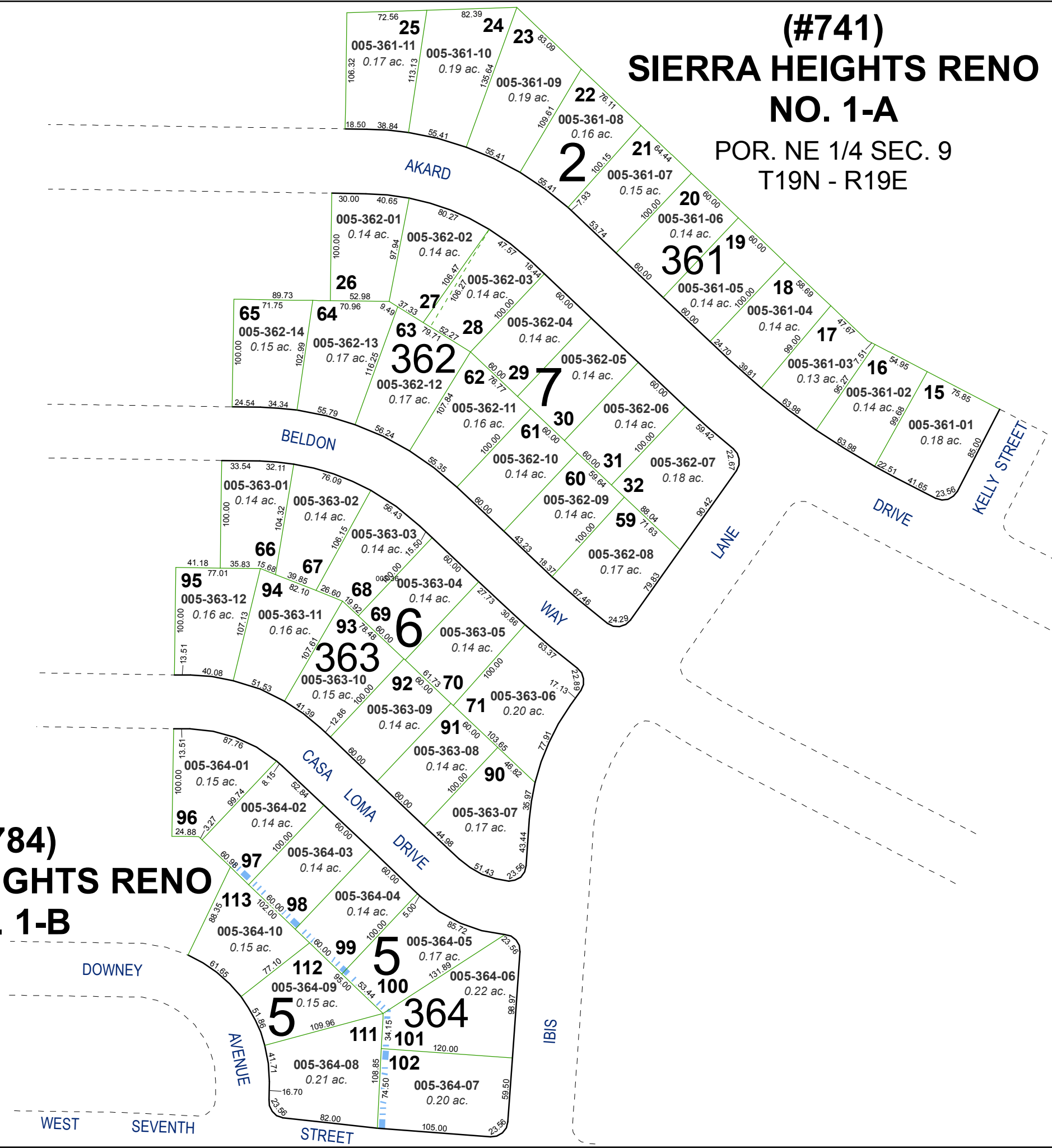


**(#784)
SIERRA HEIGHTS RENO
NO. 1-B**

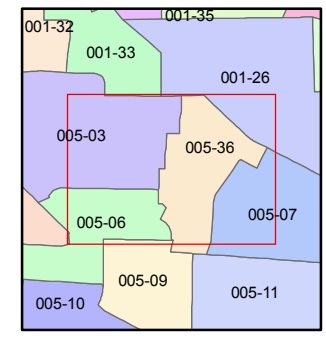
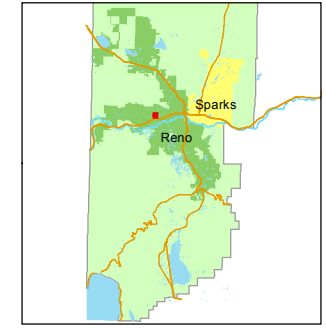
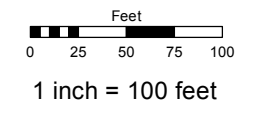


**(#741)
SIERRA HEIGHTS RENO
NO. 1-A
POR. NE 1/4 SEC. 9
T19N - R19E**

Assessor's Map Number
005-36

STATE OF NEVADA
**WASHOE COUNTY
ASSESSOR'S OFFICE**
Joshua G. Wilson, Assessor

1001 East Ninth Street
Building D
Reno, Nevada 89512
(775) 328-2231



created by: TWT 8/13/2012

last updated: _____

area previously shown on map(s)
005-06 & 07

NOTE: This map was prepared for the use of the Washoe County Assessor for assessment and illustrative purposes only. It does not represent a survey of the premises. No liability is assumed as to the sufficiency or accuracy of the data delineated hereon.