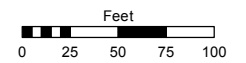


**(#795)  
SIERRA HEIGHTS RENO  
NO. 1-C**  
PORTION OF THE NW 1/4 OF SECTION 9  
T19N - R19E

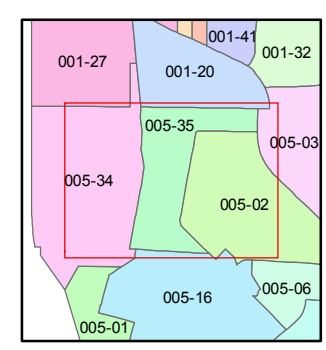
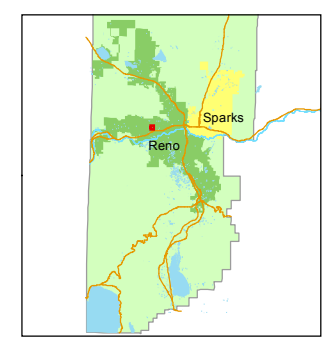
Assessor's Map Number  
**005-35**

STATE OF NEVADA  
**WASHOE COUNTY**  
ASSESSOR'S OFFICE  
Michael E. Clark, Assessor

1001 East Ninth Street  
Building D  
Reno, Nevada 89512  
(775) 328-2231



1 inch = 100 feet



created by: TWT 8/13/2012  
last updated: CFB 03/02/2015

area previously shown on map(s)  
\_\_\_\_\_

NOTE: This map was prepared for the use of the Washoe County Assessor for assessment and illustrative purposes only. It does not represent a survey of the premises. No liability is assumed as to the sufficiency or accuracy of the data delineated hereon.