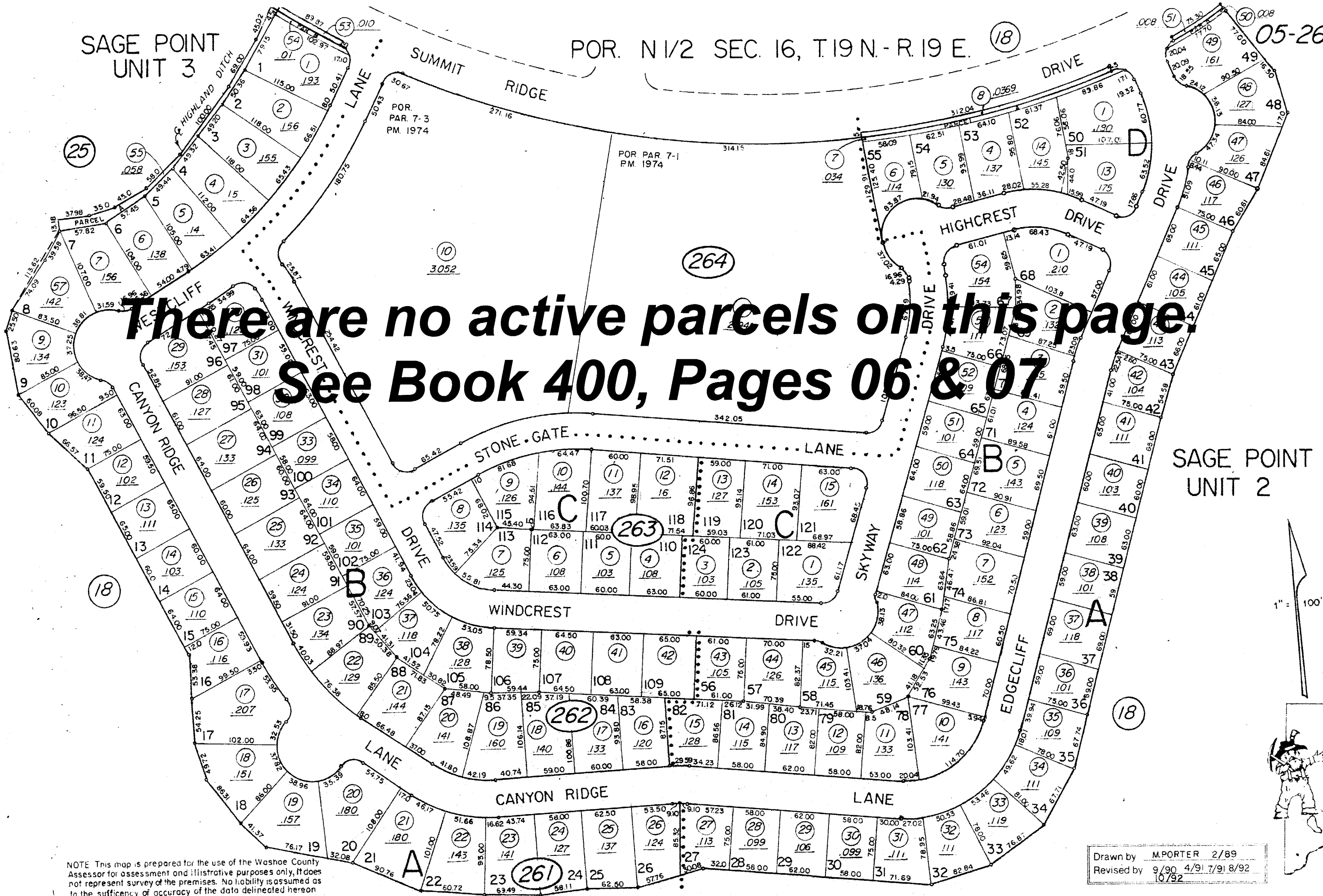


SAGE POINT UNIT 3

POR. N1/2 SEC. 16, T19 N.-R. 19 E. (18)

05-26



**There are no active parcels on this page.  
See Book 400, Pages 06 & 07**

SAGE POINT UNIT 2

1" = 100'



NOTE This map is prepared for the use of the Washoe County Assessor for assessment and illustrative purposes only, it does not represent survey of the premises. No liability is assumed as to the sufficiency of accuracy of the data delineated hereon.

Drawn by M.PORTER 2/89  
Revised by 9/90 4/91 7/91 8/92  
10/92