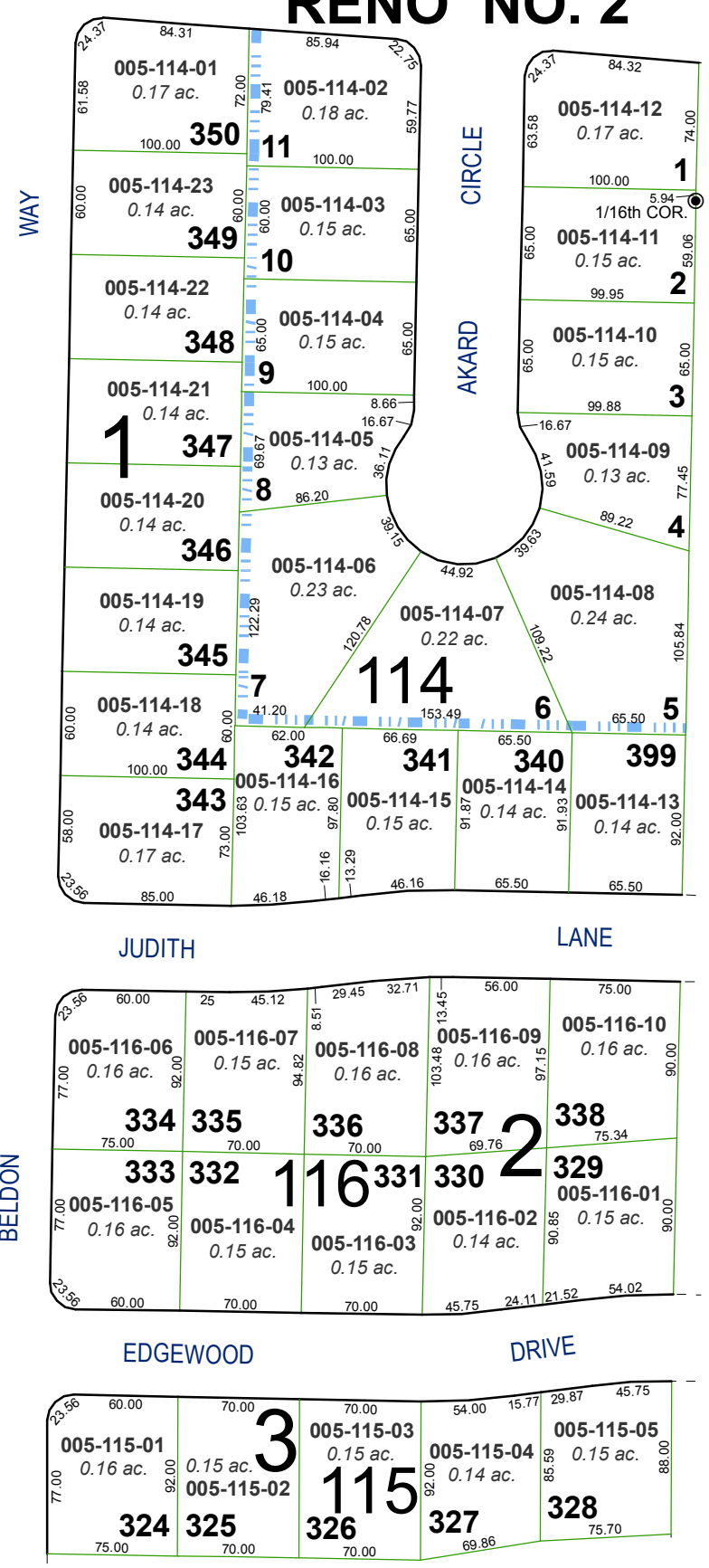
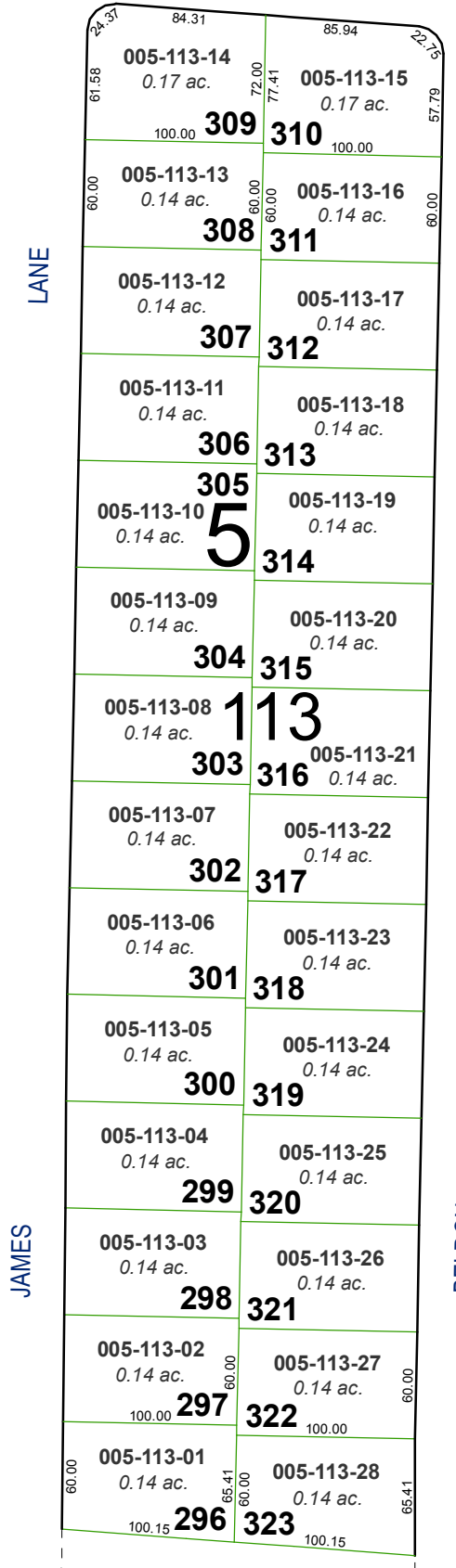
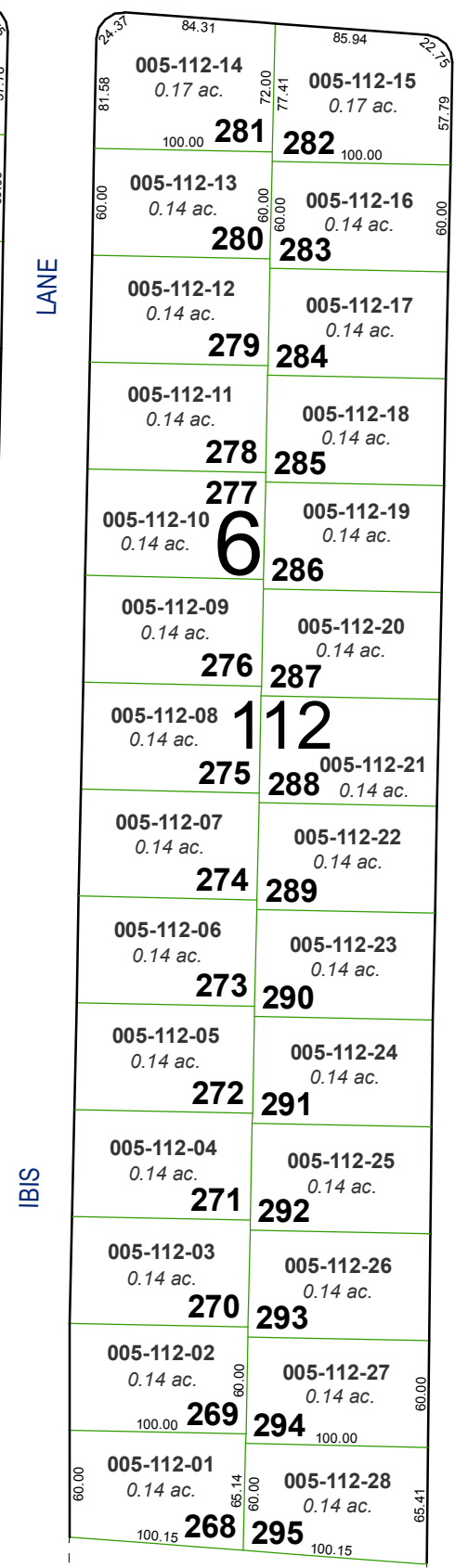
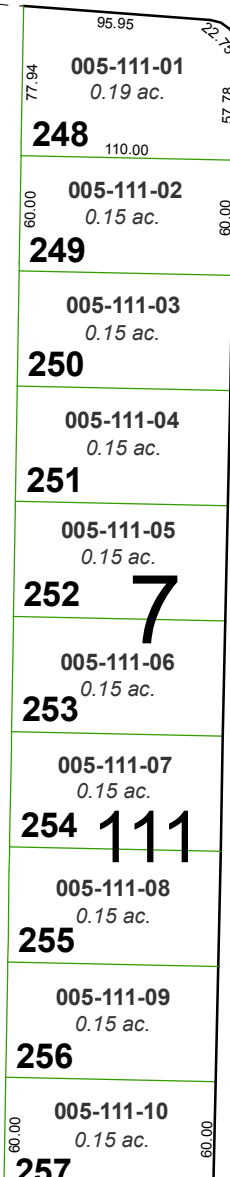
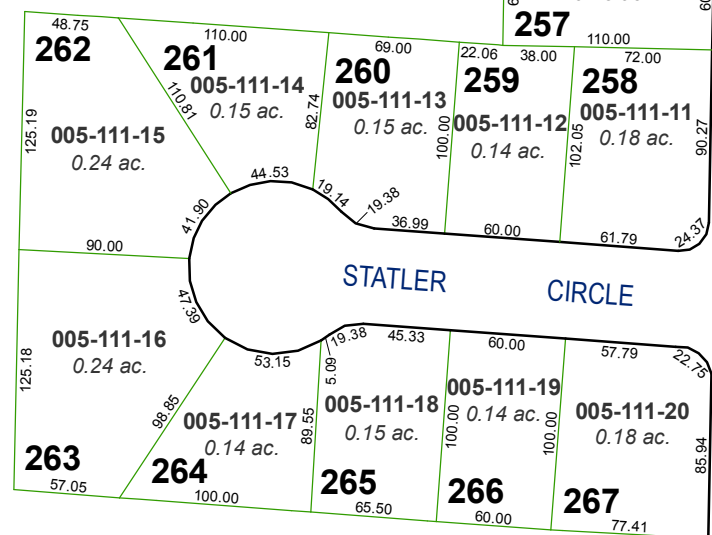


**(#831)
SIERRA HEIGHTS
RENO NO. 2-B**

POR. OF THE
NE 1/4 OF SEC. 9
T19N - R19E



Assessor's Map Number
005-11

STATE OF NEVADA
WASHOE COUNTY
ASSESSOR'S OFFICE
Joshua G. Wilson, Assessor

1001 East Ninth Street
Building D
Reno, Nevada 89512
(775) 328-2231

0 25 50 75 100
Feet
1 inch = 100 feet

created by: TWT 7/13/2012
last updated: _____
area previously shown on map(s) _____

NOTE: This map was prepared for the use of the Washoe County Assessor for assessment and illustrative purposes only. It does not represent a survey of the premises. No liability is assumed as to the sufficiency or accuracy of the data delineated hereon.

**(#787)
SIERRA HEIGHTS
RENO NO. 2**

