

(#720) CAPITOL HEIGHTS SUBDIVISION NO. 1

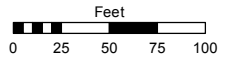
POR. NE 1/4 SEC. 9
& NW 1/4 SEC. 10
T19N - R19E

Assessor's Map Number

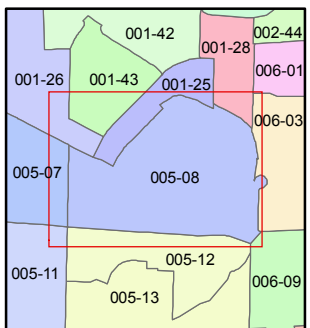
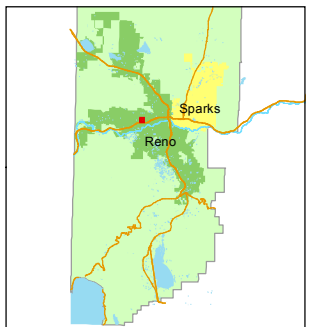
005-08

STATE OF NEVADA
WASHOE COUNTY
ASSESSOR'S OFFICE
Joshua G. Wilson, Assessor

1001 East Ninth Street
Building D
Reno, Nevada 89512
(775) 328-2231



1 inch = 100 feet

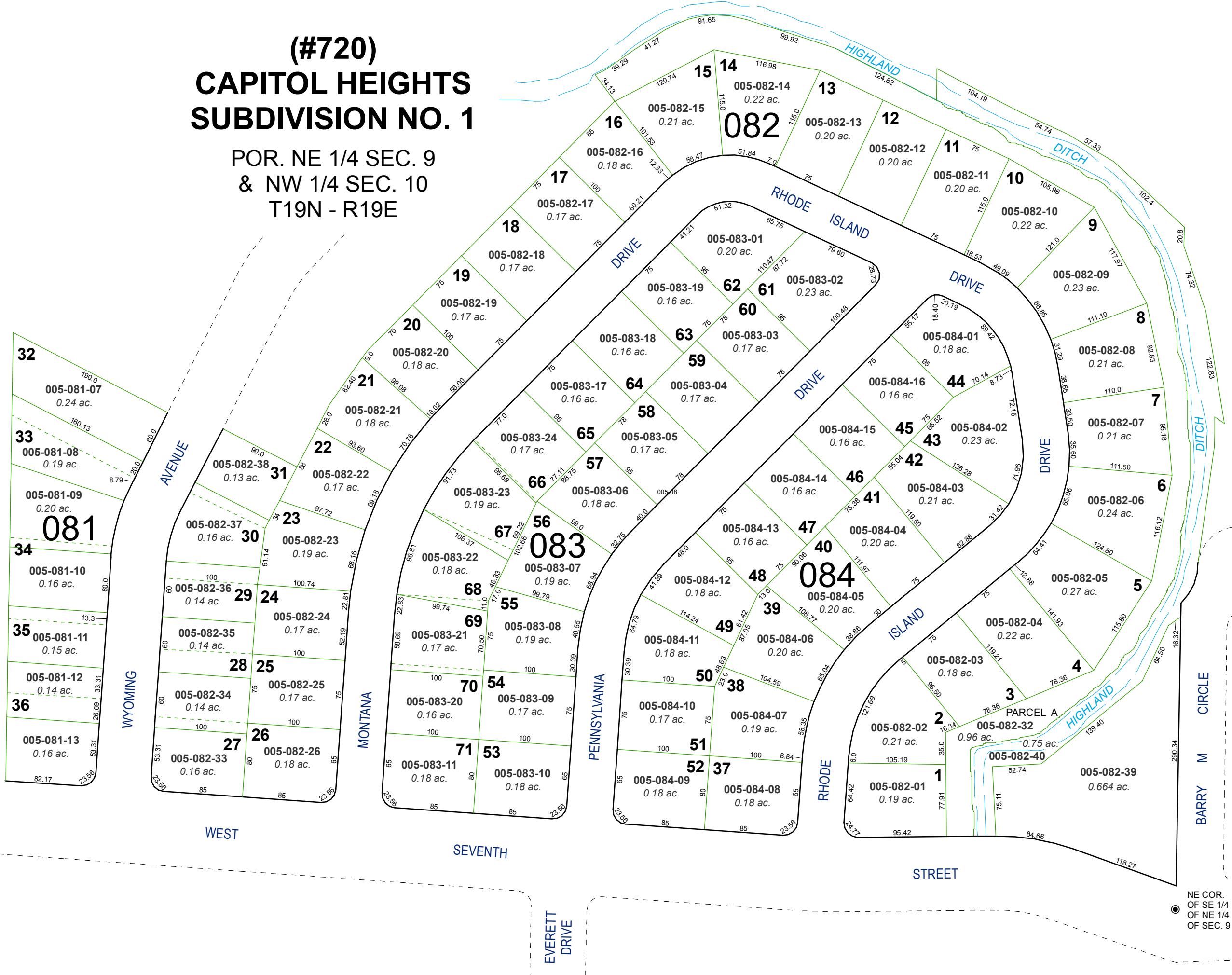


created by: TWT 7/11/2012

last updated: _____

area previously shown on map(s) _____

NOTE: This map was prepared for the use of the Washoe County Assessor for assessment and illustrative purposes only. It does not represent a survey of the premises. No liability is assumed as to the sufficiency or accuracy of the data delineated hereon.



NE COR.
OF SE 1/4
OF NE 1/4
OF SEC. 9