

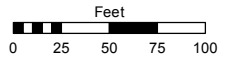
# (#784) SIERRA HEIGHTS RENO NO. 1-B

Assessor's Map Number

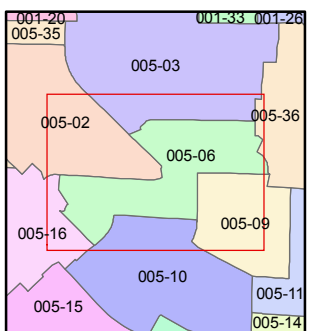
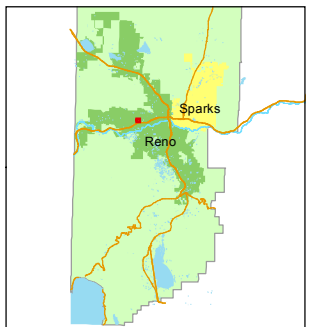
**005-06**

STATE OF NEVADA  
**WASHOE COUNTY**  
ASSESSOR'S OFFICE  
Joshua G. Wilson, Assessor

1001 East Ninth Street  
Building D  
Reno, Nevada 89512  
(775) 328-2231



1 inch = 100 feet

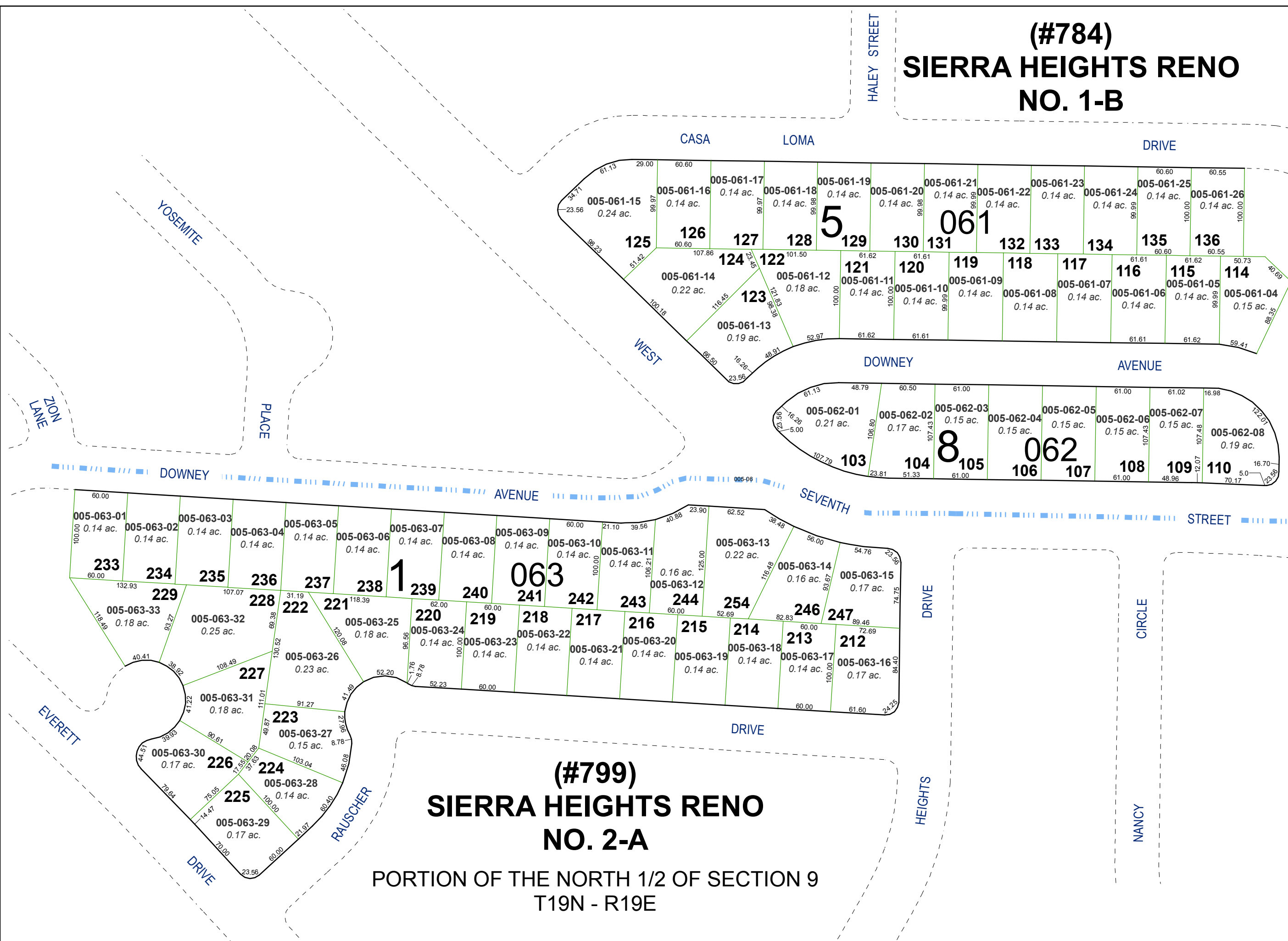


created by: TWT 7/10/2012

last updated: \_\_\_\_\_

area previously shown on map(s) \_\_\_\_\_

NOTE: This map was prepared for the use of the Washoe County Assessor for assessment and illustrative purposes only. It does not represent a survey of the premises. No liability is assumed as to the sufficiency or accuracy of the data delineated hereon.



# (#799) SIERRA HEIGHTS RENO NO. 2-A

PORTION OF THE NORTH 1/2 OF SECTION 9  
T19N - R19E