

(#329)

ALAMEDA HEIGHTS

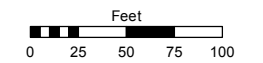
POR. NE 1/4 SEC. 1, T19N - R19E
&
POR. SE 1/4 SEC. 36, T20N - R19E

S-most corner
Whispering Springs
Amended (#2083)

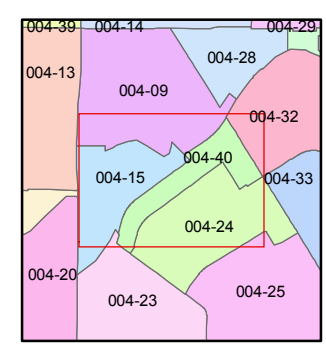
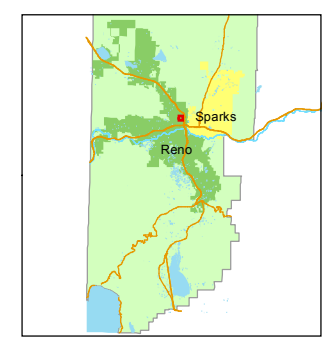
Assessor's Map Number
004-40

STATE OF NEVADA
WASHOE COUNTY
ASSESSOR'S OFFICE
Joshua G. Wilson, Assessor

1001 East Ninth Street
Building D
Reno, Nevada 89512
(775) 328-2231



1 inch = 100 feet



created by: TWT 6/25/2012

last updated: _____

area previously shown on map(s)
004-24

NOTE: This map was prepared for the use of the Washoe County Assessor for assessment and illustrative purposes only. It does not represent a survey of the premises. No liability is assumed as to the sufficiency or accuracy of the data delineated hereon.

SUTRO STREET

SUTRO STREET

DRIVE

PATTON

WEDEKIND

MONTELO STREET

WILDER

CITRON

ROAD

STREET

HELENA

STREET

AVENUE

BISHOP STREET

STREET

16

004-401-01
5538 sf

15

004-401-02
6020 sf

14

004-401-03
6883 sf

13

004-401-04
8658 sf

12

004-401-05
7428 sf

11

004-401-06
7654 sf

10

004-401-07
7654 sf

9

004-401-08
7654 sf

8

004-401-09
7654 sf

7

004-401-10
7654 sf

6

004-401-11
7654 sf

5

004-401-12
7654 sf

4

004-401-13
7638 sf

3

004-401-14
7406 sf

2

004-401-15
7126 sf

1

004-401-16
7217 sf

7

004-402-01
13187 sf

6

004-402-02
9375 sf

5

004-402-03
9375 sf

4

004-402-04
9375 sf

402
R

3

004-402-05
9375 sf

2

004-402-06
9375 sf

1

004-402-07
9327 sf