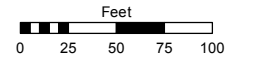


(#2045)
SIERRA GARDENS MOBILE HOME SUBDIVISION
 PORTION OF THE SW ¼ OF SECTION 36
 T20N - R19E

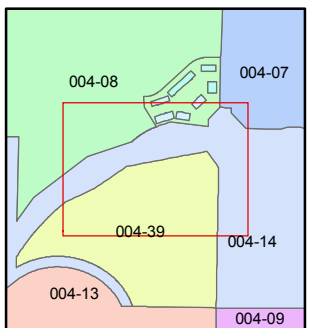
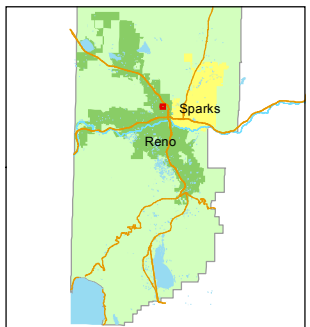
Assessor's Map Number
004-39-S2

STATE OF NEVADA
WASHOE COUNTY
ASSESSOR'S OFFICE
 Joshua G. Wilson, Assessor

1001 East Ninth Street
 Building D
 Reno, Nevada 89512
 (775) 328-2231



1 inch = 100 feet



created by: TWT 6/21/2012

last updated: _____

area previously shown on map(s)

NOTE: This map was prepared for the use of the Washoe County Assessor for assessment and illustrative purposes only. It does not represent a survey of the premises. No liability is assumed as to the sufficiency or accuracy of the data delineated hereon.

