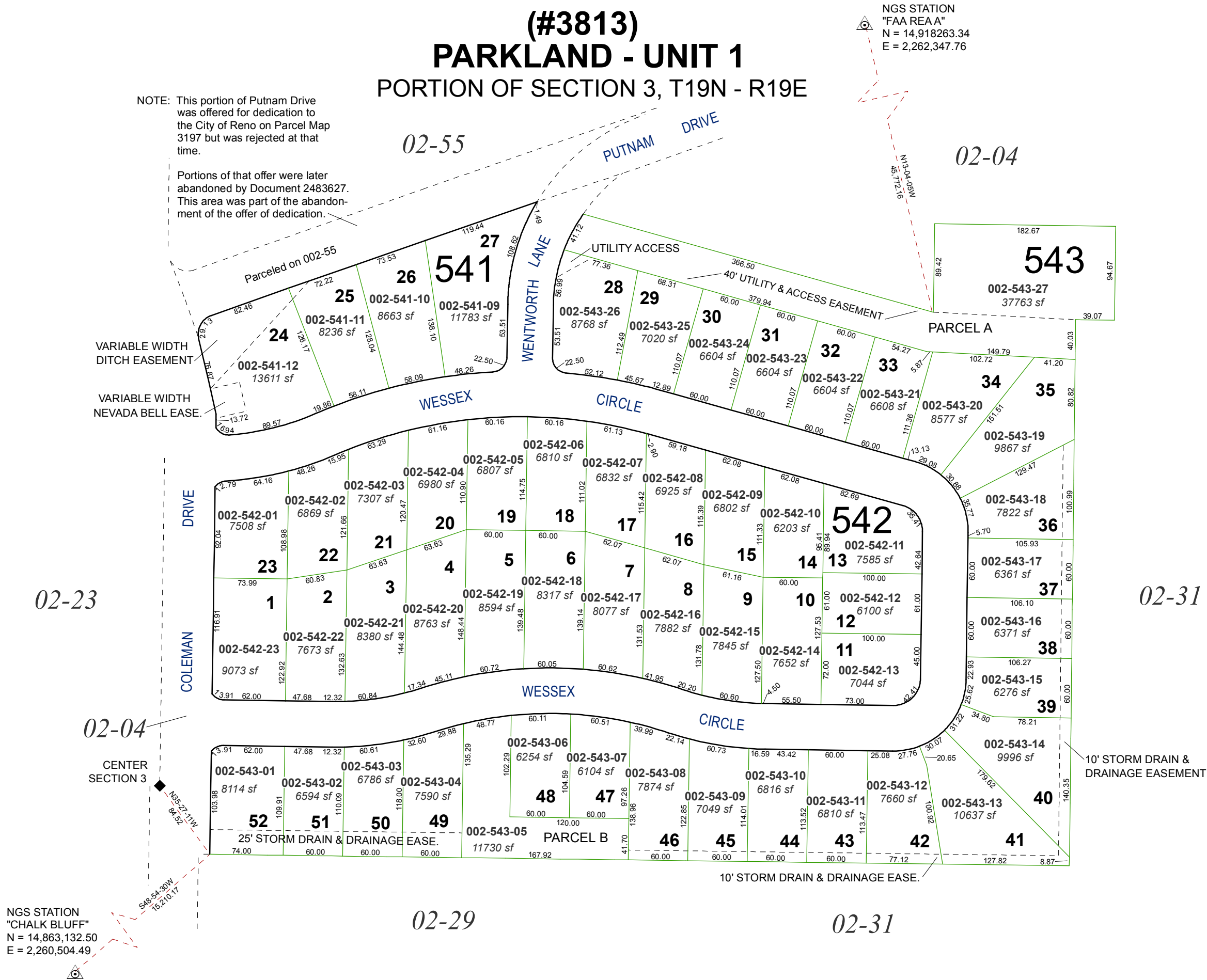


(#3813) PARKLAND - UNIT 1 PORTION OF SECTION 3, T19N - R19E

NOTE: This portion of Putnam Drive was offered for dedication to the City of Reno on Parcel Map 3197 but was rejected at that time.

Portions of that offer were later abandoned by Document 2483627. This area was part of the abandonment of the offer of dedication.

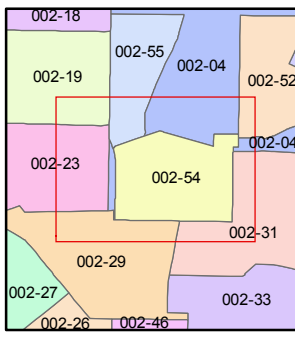
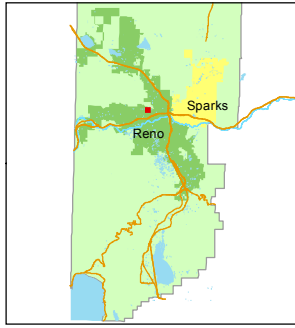
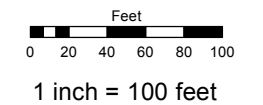
VARIABLE WIDTH DITCH EASEMENT
VARIABLE WIDTH NEVADA BELL EASE.



Assessor's Map Number
002-54

STATE OF NEVADA
WASHOE COUNTY
ASSESSOR'S OFFICE
Joshua G. Wilson, Assessor

1001 East Ninth Street
Building D
Reno, Nevada 89512
(775) 328-2231



created by: CFB 07/20/2012
last updated: CFB 01/31/2013

area previously shown on map(s)

NOTE: This map was prepared for the use of the Washoe County Assessor for assessment and illustrative purposes only. It does not represent a survey of the premises. No liability is assumed as to the sufficiency or accuracy of the data delineated hereon.