

PORTION OF THE S 1/2 OF SECTION 3
T19N - R19E

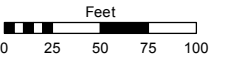
(#676)
ROYAL HEIGHTS SUBDIVISION NO. 1

Assessor's Map Number

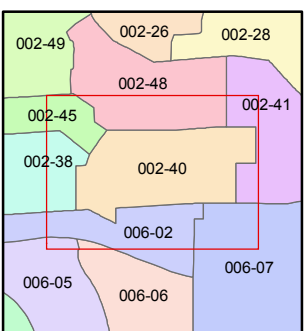
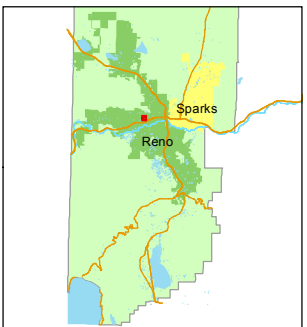
002-40

STATE OF NEVADA
WASHOE COUNTY
ASSESSOR'S OFFICE
Joshua G. Wilson, Assessor

1001 East Ninth Street
Building D
Reno, Nevada 89512
(775) 328-2231



1 inch = 100 feet

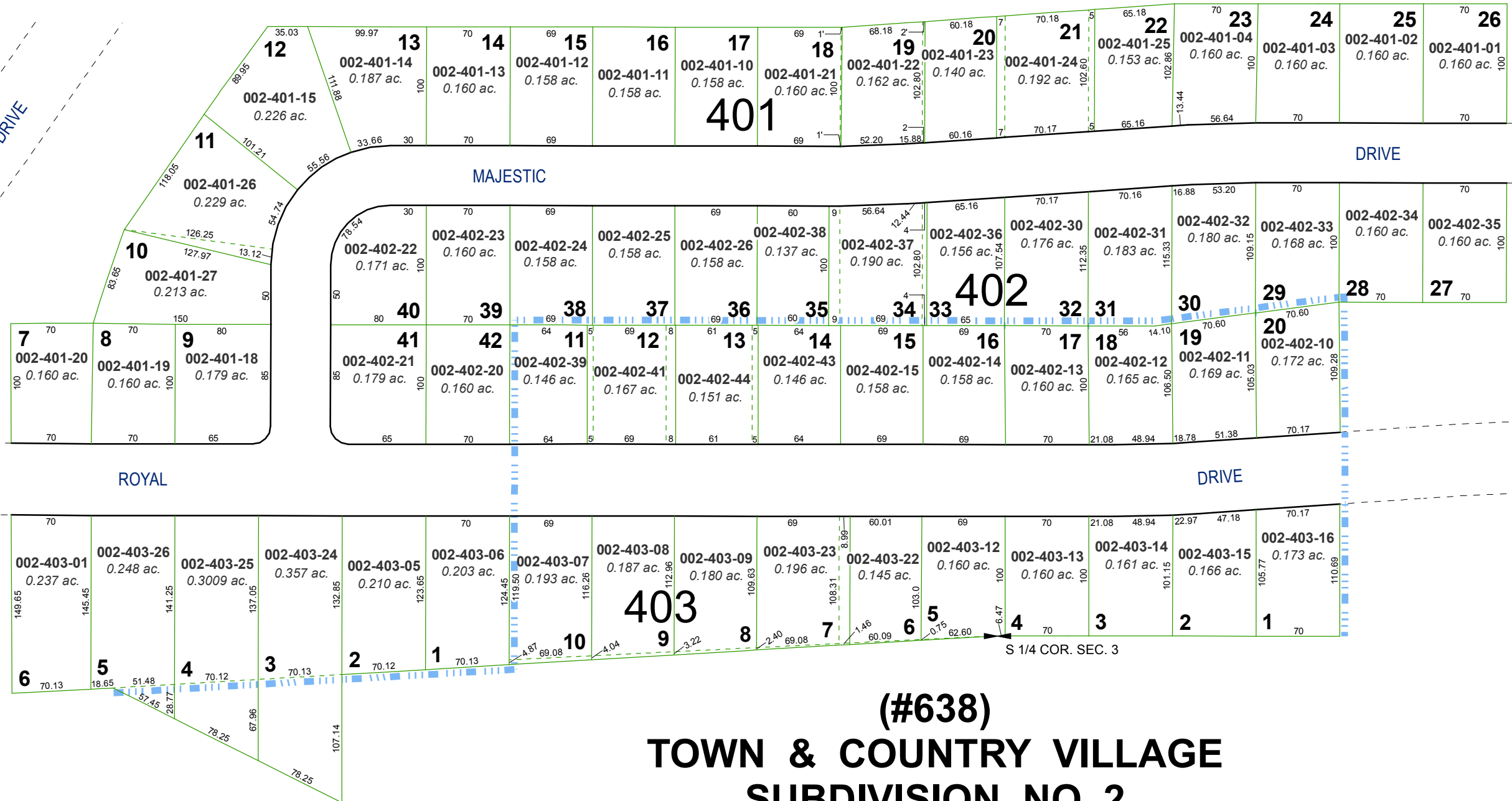


created by: TWT 4/6/2012

last updated: _____

area previously shown on map(s)

NOTE: This map was prepared for the use of the Washoe County Assessor for assessment and illustrative purposes only. It does not represent a survey of the premises. No liability is assumed as to the sufficiency or accuracy of the data delineated hereon.



(#638)
TOWN & COUNTRY VILLAGE
SUBDIVISION NO. 2
AMENDED